

## PREP-2 Polyclonal Antibody

<b>Catalog No :</b>	YT3855
<b>Reactivity :</b>	Human;Mouse
<b>Applications :</b>	WB;IHC;IF;ELISA
<b>Target :</b>	PREP-2
<b>Gene Name :</b>	PKNOX2
<b>Protein Name :</b>	Homeobox protein PKNOX2
<b>Human Gene Id :</b>	63876
<b>Human Swiss Prot No :</b>	Q96KN3
<b>Mouse Gene Id :</b>	208076
<b>Mouse Swiss Prot No :</b>	Q8BG99
<b>Immunogen :</b>	The antiserum was produced against synthesized peptide derived from human PKNOX2. AA range:341-390
<b>Specificity :</b>	PREP-2 Polyclonal Antibody detects endogenous levels of PREP-2 protein.
<b>Formulation :</b>	Liquid in PBS containing 50% glycerol, 0.5% BSA and 0.02% sodium azide.
<b>Source :</b>	Polyclonal, Rabbit,IgG
<b>Dilution :</b>	WB 1:500 - 1:2000. IHC 1:100 - 1:300. ELISA: 1:20000.. IF 1:50-200
<b>Purification :</b>	The antibody was affinity-purified from rabbit antiserum by affinity-chromatography using epitope-specific immunogen.
<b>Concentration :</b>	1 mg/ml
<b>Storage Stability :</b>	-15°C to -25°C/1 year(Do not lower than -25°C)

**Observed Band :** 55kD

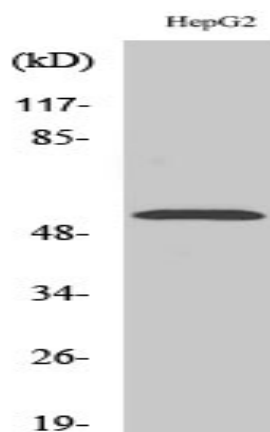
**Background :** Homeodomain proteins are sequence-specific transcription factors that share a highly conserved DNA-binding domain and play fundamental roles in cell proliferation, differentiation, and death. PKNOX2 belongs to the TALE (3-amino acid loop extension) class of homeodomain proteins characterized by a 3-amino acid extension between alpha helices 1 and 2 within the homeodomain (Imoto et al., 2001 [PubMed 11549286]).[supplied by OMIM, Oct 2009],

**Function :** similarity:Belongs to the TALE/MEIS homeobox family.,similarity:Contains 1 homeobox DNA-binding domain.,

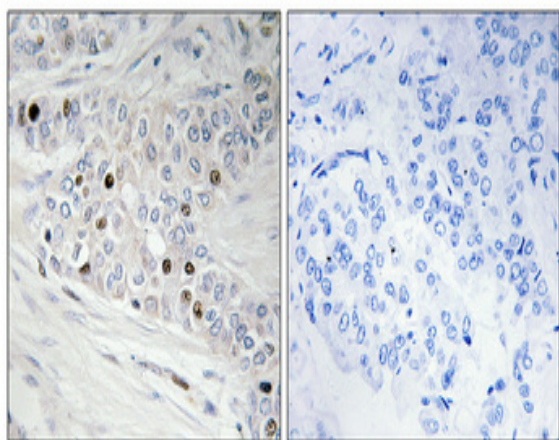
**Subcellular Location :** Nucleus .

**Expression :** Brain,Small intestine,

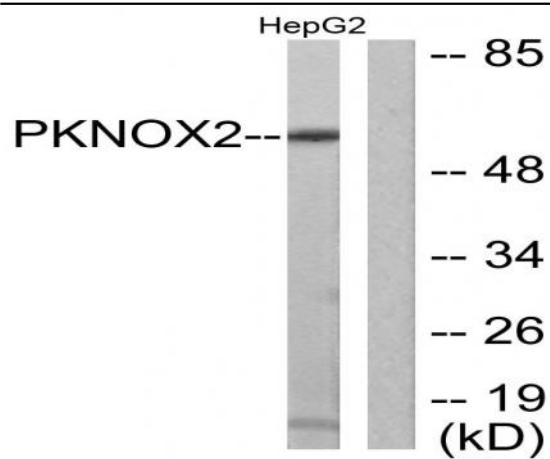
## Products Images



Western Blot analysis of various cells using PREP-2 Polyclonal Antibody



Immunohistochemical analysis of paraffin-embedded Human breast cancer. Antibody was diluted at 1:100(4° overnight). High-pressure and temperature Tris-EDTA,pH8.0 was used for antigen retrieval. Negative contrl (right) obtaned from antibody was pre-absorbed by immunogen peptide.



Western blot analysis of lysates from HepG2 cells, using PKNOX2 Antibody. The lane on the right is blocked with the synthesized peptide.