

PAR-6 β Polyclonal Antibody

Catalog No :	YT3589
Reactivity :	Human;Mouse
Applications :	WB;IHC;IF;ELISA
Target :	PAR-6 β
Fields :	>>Rap1 signaling pathway;>>Endocytosis;>>Axon guidance;>>Hippo signaling pathway;>>Tight junction;>>Human papillomavirus infection
Gene Name :	PARD6B
Protein Name :	Partitioning defective 6 homolog beta
Human Gene Id :	84612
Human Swiss Prot No :	Q9BYG5
Mouse Gene Id :	58220
Mouse Swiss Prot No :	Q9JK83
Immunogen :	The antiserum was produced against synthesized peptide derived from human PARD6B. AA range:233-282
Specificity :	PAR-6 β Polyclonal Antibody detects endogenous levels of PAR-6 β protein.
Formulation :	Liquid in PBS containing 50% glycerol, 0.5% BSA and 0.02% sodium azide.
Source :	Polyclonal, Rabbit,IgG
Dilution :	WB 1:500 - 1:2000. IHC 1:100 - 1:300. ELISA: 1:5000.. IF 1:50-200
Purification :	The antibody was affinity-purified from rabbit antiserum by affinity-chromatography using epitope-specific immunogen.
Concentration :	1 mg/ml

Storage Stability : -15°C to -25°C/1 year(Do not lower than -25°C)

Observed Band : 38kD

Cell Pathway : Endocytosis;Tight junction;

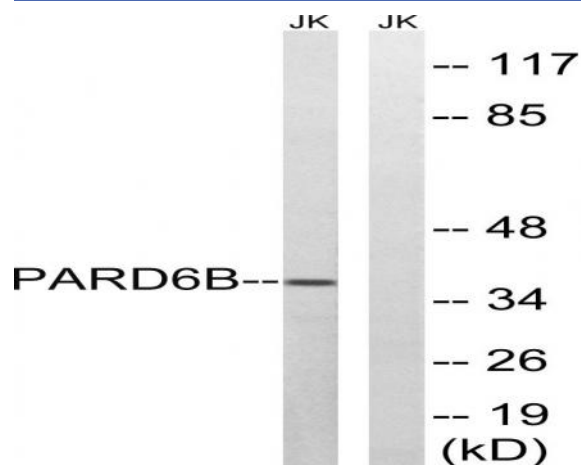
Background : This gene is a member of the PAR6 family and encodes a protein with a PSD95/Discs-large/ZO1 (PDZ) domain, an OPR domain and a semi-Cdc42/Rac interactive binding (CRIB) domain. This cytoplasmic protein is involved in asymmetrical cell division and cell polarization processes as a member of a multi-protein complex. [provided by RefSeq, Jul 2008],

Function : domain:The PDZ domain mediates interaction with MPP5.,domain:The pseudo-CRIB domain together with the PDZ domain is required for the interaction with Rho small GTPases.,function:Adapter protein involved in asymmetrical cell division and cell polarization processes. Probably involved in formation of epithelial tight junctions. Association with PARD3 may prevent the interaction of PARD3 with F11R/JAM1, thereby preventing tight junction assembly. The PARD6-PARD3 complex links GTP-bound Rho small GTPases to atypical protein kinase C proteins.,similarity:Belongs to the PAR6 family.,similarity:Contains 1 OPR domain.,similarity:Contains 1 PDZ (DHR) domain.,similarity:Contains 1 pseudo-CRIB domain.,subunit:Interacts with PARD3. Interacts with GTP-bound forms of CDC42 and RAC1. Interacts with GTP-bound ARHQ/TC10. Interacts with MPP5 (By similarity). Interacts with the N-terminal part of PRKCI and

Subcellular Location : Cytoplasm. Cell membrane . Cell junction, tight junction .

Expression : Expressed in pancreas and in both adult and fetal kidney. Weakly expressed in placenta and lung. Not expressed in other tissues.

Products Images



Western blot analysis of lysates from Jurkat cells, using PARD6B Antibody. The lane on the right is blocked with the synthesized peptide.