

PAR-4 Polyclonal Antibody

Catalog No :	YT3588
Reactivity :	Human;Mouse;Rat
Applications :	WB;IF;ELISA
Target :	PAR-4
Fields :	>>Rap1 signaling pathway;>>Neuroactive ligand-receptor interaction;>>Complement and coagulation cascades;>>Platelet activation;>>Pathways in cancer
Gene Name :	F2RL3
Protein Name :	Proteinase-activated receptor 4
Human Gene Id :	9002
Human Swiss Prot No :	Q96RI0
Mouse Gene Id :	14065
Mouse Swiss Prot No :	O88634
Rat Gene Id :	116498
Rat Swiss Prot No :	Q920E0
Immunogen :	The antiserum was produced against synthesized peptide derived from human PAR4. AA range:29-78
Specificity :	PAR-4 Polyclonal Antibody detects endogenous levels of PAR-4 protein.
Formulation :	Liquid in PBS containing 50% glycerol, 0.5% BSA and 0.02% sodium azide.
Source :	Polyclonal, Rabbit,IgG
Dilution :	WB 1:500 - 1:2000. IF 1:200 - 1:1000. ELISA: 1:10000. Not yet tested in other

applications.

Purification : The antibody was affinity-purified from rabbit antiserum by affinity-chromatography using epitope-specific immunogen.

Concentration : 1 mg/ml

Storage Stability : -15°C to -25°C/1 year(Do not lower than -25°C)

Observed Band : 41kD

Cell Pathway : Neuroactive ligand-receptor interaction;

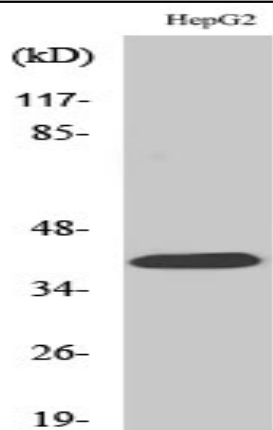
Background : This gene encodes a member of the protease-activated receptor subfamily, part of the G-protein coupled receptor 1 family of proteins. The encoded receptor is proteolytically processed to reveal an extracellular N-terminal tethered ligand that binds to and activates the receptor. This receptor plays a role in blood coagulation, inflammation and response to pain. Hypomethylation at this gene may be associated with lung cancer in human patients. [provided by RefSeq, Sep 2016],

Function : function:Receptor for activated thrombin or trypsin coupled to G proteins that stimulate phosphoinositide hydrolysis. May play a role in platelets activation.,PTM:A proteolytic cleavage generates a new N-terminus that functions as a tethered ligand.,similarity:Belongs to the G-protein coupled receptor 1 family.,tissue specificity:Widely expressed, with highest levels in lung, pancreas, thyroid, testis and small intestine. Not expressed in brain, kidney, spinal cord and peripheral blood leukocytes. Also detected in platelets.,

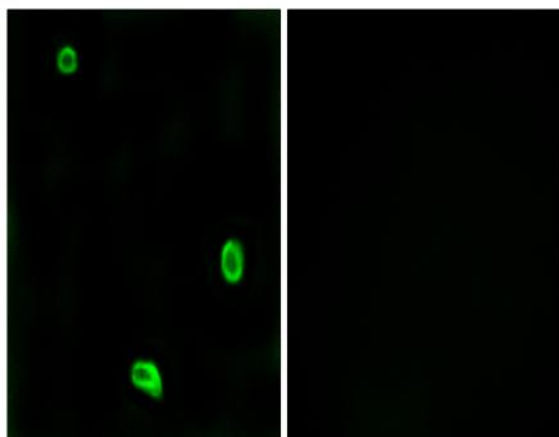
Subcellular Location : Cell membrane; Multi-pass membrane protein.

Expression : Widely expressed, with highest levels in lung, pancreas, thyroid, testis and small intestine. Not expressed in brain, kidney, spinal cord and peripheral blood leukocytes. Also detected in platelets.

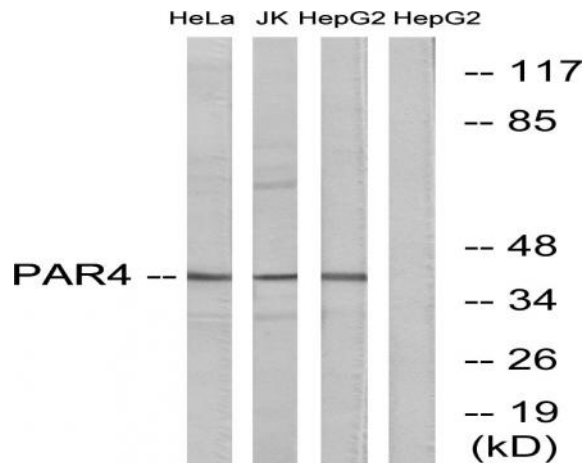
Products Images



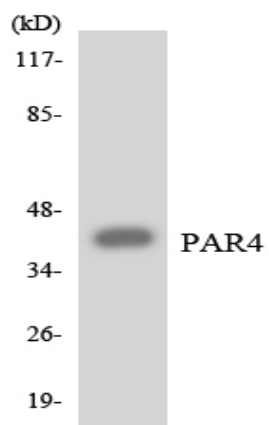
Western Blot analysis of various cells using PAR-4 Polyclonal Antibody



Immunofluorescence analysis of LOVO cells, using PAR4 Antibody. The picture on the right is blocked with the synthesized peptide.



Western blot analysis of lysates from HepG2 and Jurkat/HeLa cells, using PAR4 Antibody. The lane on the right is blocked with the synthesized peptide.



Western blot analysis of the lysates from HT-29 cells using PAR4 antibody.