

PAI-3 Polyclonal Antibody

Catalog No :	YT3571
Reactivity :	Human;Mouse
Applications :	WB;IHC;IF;ELISA
Target :	PAI-3
Fields :	>>Complement and coagulation cascades
Gene Name :	SERPINA5
Protein Name :	Plasma serine protease inhibitor
Human Gene Id :	155698
Human Swiss Prot No :	P05154
Mouse Swiss Prot No :	P70458
Immunogen :	The antiserum was produced against synthesized peptide derived from human Serpin A5. AA range:260-309
Specificity :	PAI-3 Polyclonal Antibody detects endogenous levels of PAI-3 protein.
Formulation :	Liquid in PBS containing 50% glycerol, 0.5% BSA and 0.02% sodium azide.
Source :	Polyclonal, Rabbit,IgG
Dilution :	WB 1:500 - 1:2000. IHC 1:100 - 1:300. ELISA: 1:20000.. IF 1:50-200
Purification :	The antibody was affinity-purified from rabbit antiserum by affinity-chromatography using epitope-specific immunogen.
Concentration :	1 mg/ml
Storage Stability :	-15°C to -25°C/1 year(Do not lower than -25°C)

Observed Band : 42kD

Cell Pathway : Complement and coagulation cascades;

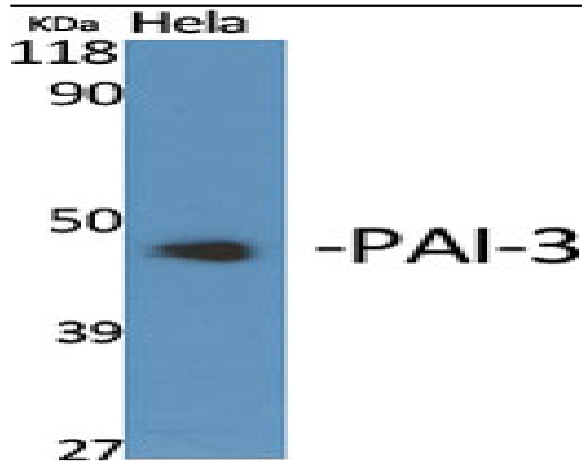
Background : The protein encoded by this gene is a member of the serpin family of proteins, a group of proteins that inhibit serine proteases. This gene is one in a cluster of serpin genes located on the q arm of chromosome 14. This family member is a glycoprotein that can inhibit several serine proteases, including protein C and various plasminogen activators and kallikreins, and it thus plays diverse roles in hemostasis and thrombosis in multiple organs. [provided by RefSeq, Aug 2012],

Function : function:Inhibits activated protein C as well as plasminogen activators.,similarity:Belongs to the serpin family.,tissue specificity:Expressed by the liver and secreted in plasma.,

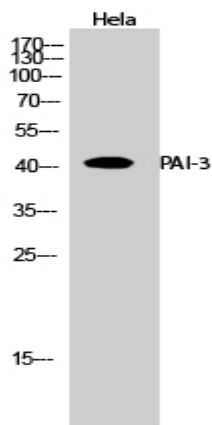
Subcellular Location : Secreted, extracellular space . Localized on the plasma membrane overlying the acrosomal head of spermatozoa of ependymal spermatozoa and ejaculated sperm. Localized at the equatorial segment of acrosome-reacted spermatozoa. Localized in alpha granules in resting platelets and on the external plasma membrane and within the surface-connected cannicular system in activated platelets.

Expression : Predominantly expressed in the epithelium of seminal vesicles. Expressed in the proximal tubular epithelium of the kidney. Expressed in the superficial and more differentiated epidermal keratinocytes of the skin. Expressed in megakaryocytes and platelets. Expressed poorly in kidney tumor cells compared to non tumor kidney tissues. Expressed in spermatozoa. Present in very high concentration in seminal plasma. Present in high concentration in plasma, synovial and Graaf follicle fluids. Present in low concentration in breast milk and in amniotic fluids. Present in very low concentration in urine, cerebrospinal fluids, saliva and tears (at protein level). Strongly expressed in liver. Expressed in kidney, spleen, pancreas, skeletal muscle, heart, testes, ovary, interstitial Leydig cells, epidi

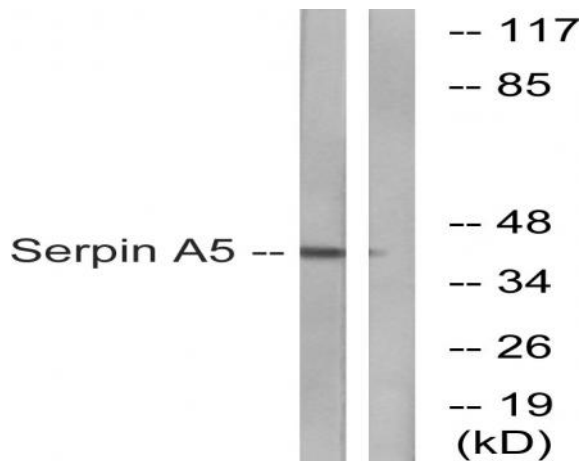
Products Images



Western Blot analysis of various cells using PAI-3 Polyclonal Antibody



Western Blot analysis of HeLa cells using PAI-3 Polyclonal Antibody



Western blot analysis of lysates from Jurkat cells, using Serpin A5 Antibody. The lane on the right is blocked with the synthesized peptide.