

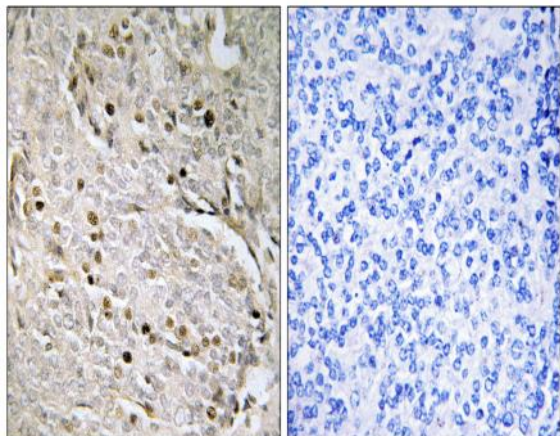
POTE-8 Polyclonal Antibody

| | |
|------------------------------|---|
| Catalog No : | YT3824 |
| Reactivity : | Human |
| Applications : | IHC;IF;ELISA |
| Target : | POTE-8 |
| Gene Name : | POTEA |
| Protein Name : | POTE ankyrin domain family member A |
| Human Gene Id : | 340441 |
| Human Swiss Prot No : | Q6S8J7 |
| Immunogen : | The antiserum was produced against synthesized peptide derived from human POTEA. AA range:375-424 |
| Specificity : | POTE-8 Polyclonal Antibody detects endogenous levels of POTE-8 protein. |
| Formulation : | Liquid in PBS containing 50% glycerol, 0.5% BSA and 0.02% sodium azide. |
| Source : | Polyclonal, Rabbit,IgG |
| Dilution : | IHC 1:100 - 1:300. ELISA: 1:5000.. IF 1:50-200 |
| Purification : | The antibody was affinity-purified from rabbit antiserum by affinity-chromatography using epitope-specific immunogen. |
| Concentration : | 1 mg/ml |
| Storage Stability : | -15°C to -25°C/1 year(Do not lower than -25°C) |
| Molecularweight : | 56kD |
| Background : | similarity:Belongs to the POTE family.,similarity:Contains 5 ANK repeats., |

Function : similarity:Belongs to the POTE family.,similarity:Contains 5 ANK repeats.,

Expression : Prostate,

Products Images



Immunohistochemistry analysis of paraffin-embedded human prostate carcinoma, using POTE8 Antibody. The picture on the right is blocked with the synthesized peptide.