

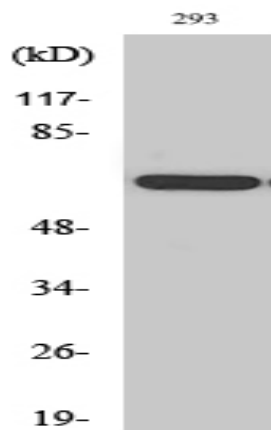
POTE14/22 Polyclonal Antibody

Catalog No :	YT3821
Reactivity :	Human
Applications :	WB;IHC;IF;ELISA
Target :	POTE14/22
Gene Name :	POTEG
Protein Name :	POTE ankyrin domain family member G
Human Gene Id :	404785/23784
Human Swiss Prot No :	Q6S5H5/Q6S545/A6NI47
Immunogen :	The antiserum was produced against synthesized peptide derived from human POTEG. AA range:401-450
Specificity :	POTE14/22 Polyclonal Antibody detects endogenous levels of POTE14/22 protein.
Formulation :	Liquid in PBS containing 50% glycerol, 0.5% BSA and 0.02% sodium azide.
Source :	Polyclonal, Rabbit,IgG
Dilution :	WB 1:500 - 1:2000. IHC 1:100 - 1:300. ELISA: 1:40000.. IF 1:50-200
Purification :	The antibody was affinity-purified from rabbit antiserum by affinity-chromatography using epitope-specific immunogen.
Concentration :	1 mg/ml
Storage Stability :	-15°C to -25°C/1 year(Do not lower than -25°C)
Observed Band :	67kD
Background :	similarity:Belongs to the POTE family.,similarity:Contains 5 ANK repeats.,

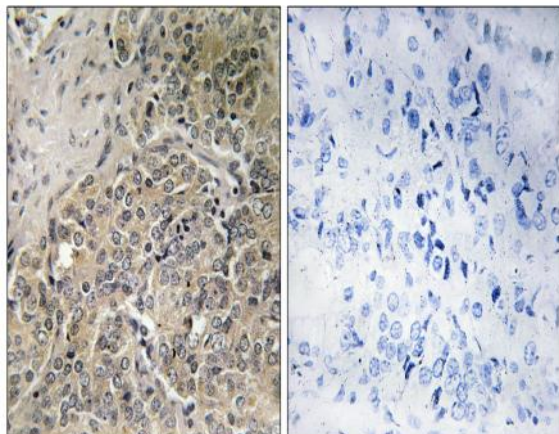
Function : similarity:Belongs to the POTE family.,similarity:Contains 5 ANK repeats.,

Expression : Prostate,

Products Images



Western Blot analysis of various cells using POTE14/22 Polyclonal Antibody



Immunohistochemistry analysis of paraffin-embedded human prostate carcinoma, using A26C2/3 Antibody. The picture on the right is blocked with the synthesized peptide.