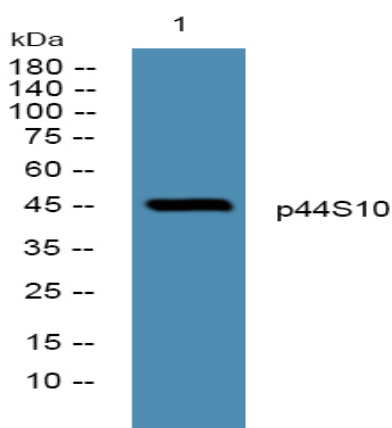


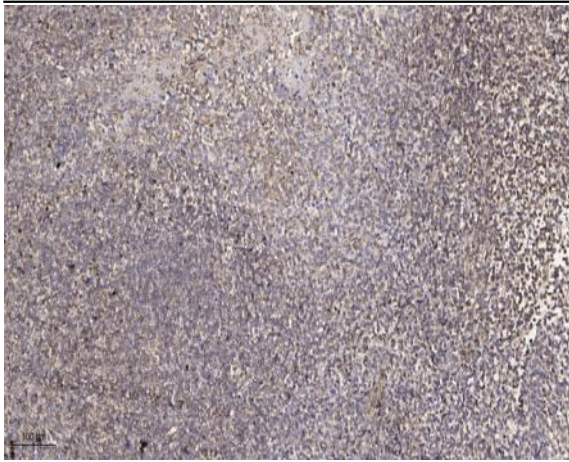
p44S10 Polyclonal Antibody

Catalog No :	YT3517
Reactivity :	Human;Mouse;Rat
Applications :	WB;IHC;IF;ELISA
Target :	p44S10
Fields :	>>Proteasome;>>Alzheimer disease;>>Parkinson disease;>>Amyotrophic lateral sclerosis;>>Huntington disease;>>Spinocerebellar ataxia;>>Prion disease;>>Pathways of neurodegeneration - multiple diseases;>>Epstein-Barr virus infection
Gene Name :	PSMD6
Protein Name :	26S proteasome non-ATPase regulatory subunit 6
Human Gene Id :	9861
Human Swiss Prot No :	Q15008
Mouse Gene Id :	66413
Mouse Swiss Prot No :	Q99JI4
Immunogen :	The antiserum was produced against synthesized peptide derived from human PSMD6. AA range:201-250
Specificity :	p44S10 Polyclonal Antibody detects endogenous levels of p44S10 protein.
Formulation :	Liquid in PBS containing 50% glycerol, 0.5% BSA and 0.02% sodium azide.
Source :	Polyclonal, Rabbit,IgG
Dilution :	WB 1:500 - 1:2000. IHC 1:100 - 1:300. ELISA: 1:40000.. IF 1:50-200
Purification :	The antibody was affinity-purified from rabbit antiserum by affinity-chromatography using epitope-specific immunogen.

Concentration :	1 mg/ml
Storage Stability :	-15°C to -25°C/1 year(Do not lower than -25°C)
Observed Band :	45kD
Cell Pathway :	Proteasome;
Background :	This gene encodes a member of the protease subunit S10 family. The encoded protein is a subunit of the 26S proteasome which colocalizes with DNA damage foci and is involved in the ATP-dependent degradation of ubiquitinated proteins. Alternative splicing results in multiple transcript variants [provided by RefSeq, Nov 2012],
Function :	function:Acts as a regulatory subunit of the 26S proteasome which is involved in the ATP-dependent degradation of ubiquitinated proteins.,similarity:Belongs to the proteasome subunit S10 family.,similarity:Contains 1 PCI domain.,subunit:Component of the PA700 complex.,
Subcellular Location :	proteasome complex,nucleoplasm,cytosol,proteasome regulatory particle,proteasome accessory complex,extracellular exosome,
Expression :	Bone marrow,Lymph,Mammary cancer,Ovary,Placenta,Testis,

Products Images





Immunohistochemical analysis of paraffin-embedded human tonsil. 1, Antibody was diluted at 1:200(4° overnight). 2, Tris-EDTA,pH9.0 was used for antigen retrieval. 3,Secondary antibody was diluted at 1:200(room temperature, 30min).