

p39 Polyclonal Antibody

Catalog No :	YT3515
Reactivity :	Human;Mouse
Applications :	WB;IHC;IF;ELISA
Target :	p39
Gene Name :	CDK5R2
Protein Name :	Cyclin-dependent kinase 5 activator 2
Human Gene Id :	8941
Human Swiss Prot No :	Q13319
Mouse Swiss Prot No :	O35926
Immunogen :	The antiserum was produced against synthesized peptide derived from human CDK5R2. AA range:81-130
Specificity :	p39 Polyclonal Antibody detects endogenous levels of p39 protein.
Formulation :	Liquid in PBS containing 50% glycerol, 0.5% BSA and 0.02% sodium azide.
Source :	Polyclonal, Rabbit,IgG
Dilution :	WB 1:500 - 1:2000. IHC 1:100 - 1:300. ELISA: 1:20000.. IF 1:50-200
Purification :	The antibody was affinity-purified from rabbit antiserum by affinity-chromatography using epitope-specific immunogen.
Concentration :	1 mg/ml
Storage Stability :	-15°C to -25°C/1 year(Do not lower than -25°C)
Observed Band :	40kD

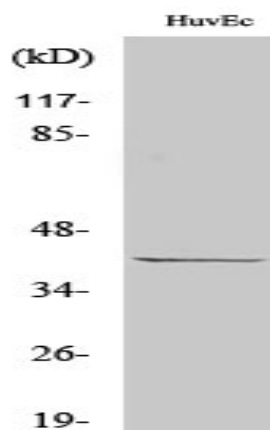
Background : The protein encoded by this gene is a neuron-specific activator of CDK5 kinase. It associates with CDK5 to form an active kinase. This protein and neuron-specific CDK5 activator CDK5R1/p39NCK5A both share limited similarity to cyclins, and thus may define a distinct family of cyclin-dependent kinase activating proteins. [provided by RefSeq, Jul 2008],

Function : function:Activator of CDK5/TPKII.,similarity:Belongs to the cyclin-dependent kinase 5 activator family.,subunit:Heterodimer of a catalytic subunit and a regulatory subunit.,tissue specificity:Brain and neuron specific.,

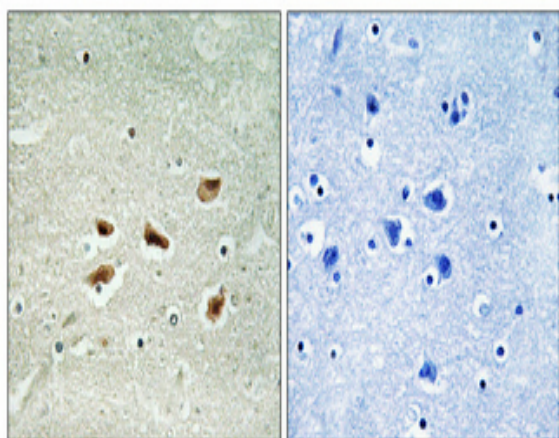
Subcellular Location : Cell membrane ; Lipid-anchor ; Cytoplasmic side .

Expression : Brain and neuron specific.

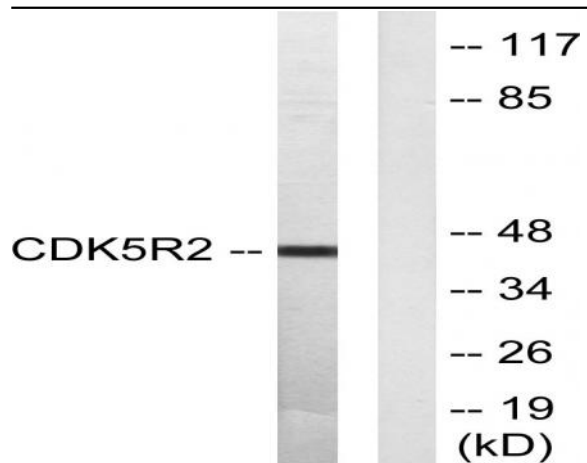
Products Images



Western Blot analysis of various cells using p39 Polyclonal Antibody cells nucleus extracted by Minute TM Cytoplasmic and Nuclear Fractionation kit (SC-003, Inventbiotech, MN, USA).



Immunohistochemical analysis of paraffin-embedded Human brain. Antibody was diluted at 1:100(4° overnight). High-pressure and temperature Tris-EDTA,pH8.0 was used for antigen retrieval. Negative control (right) obtained from antibody was pre-absorbed by immunogen peptide.



Western blot analysis of lysates from HUVEC cells, using CDK5R2 Antibody. The lane on the right is blocked with the synthesized peptide.