

PMEPA1 Polyclonal Antibody

Catalog No :	YT3800
Reactivity :	Human;Rat;Mouse;
Applications :	WB;IHC;IF;ELISA
Target :	PMEPA1
Gene Name :	PMEPA1
Protein Name :	Transmembrane prostate androgen-induced protein
Human Gene Id :	56937
Human Swiss Prot No :	Q969W9
Mouse Swiss Prot No :	Q9D7R2
Immunogen :	The antiserum was produced against synthesized peptide derived from human TMEPA. AA range:101-150
Specificity :	PMEPA1 Polyclonal Antibody detects endogenous levels of PMEPA1 protein.
Formulation :	Liquid in PBS containing 50% glycerol, 0.5% BSA and 0.02% sodium azide.
Source :	Polyclonal, Rabbit,IgG
Dilution :	WB 1:500 - 1:2000. IHC 1:100 - 1:300. IF 1:200 - 1:1000. ELISA: 1:20000. Not yet tested in other applications.
Purification :	The antibody was affinity-purified from rabbit antiserum by affinity-chromatography using epitope-specific immunogen.
Concentration :	1 mg/ml
Storage Stability :	-15°C to -25°C/1 year(Do not lower than -25°C)
Observed Band :	37kD

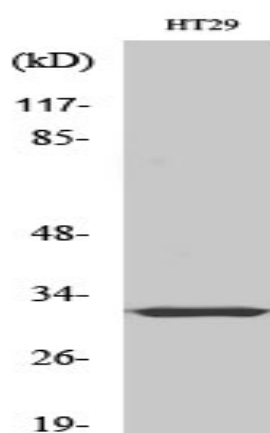
Background : This gene encodes a transmembrane protein that contains a Smad interacting motif (SIM). Expression of this gene is induced by androgens and transforming growth factor beta, and the encoded protein suppresses the androgen receptor and transforming growth factor beta signaling pathways through interactions with Smad proteins. Overexpression of this gene may play a role in multiple types of cancer. Alternatively spliced transcript variants encoding multiple isoforms have been observed for this gene. [provided by RefSeq, Dec 2011],

Function : domain:The WW-binding motifs mediate interaction with NEDD4.,induction:By androgen.,similarity:Belongs to the PMEPA1 family.,subunit:Interacts with the WW domains of NEDD4.,tissue specificity:Highest expression in prostate. Also expressed in ovary.,

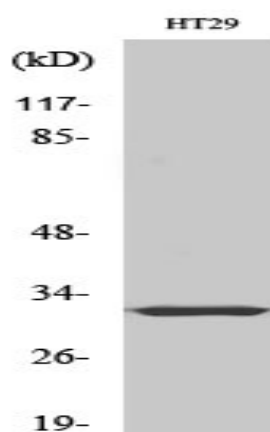
Subcellular Location : Early endosome membrane; Single-pass membrane protein. Golgi apparatus membrane; Single-pass membrane protein.

Expression : Highest expression in prostate. Also expressed in ovary.

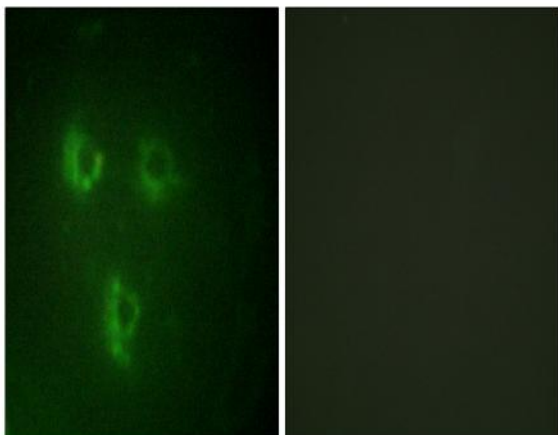
Products Images



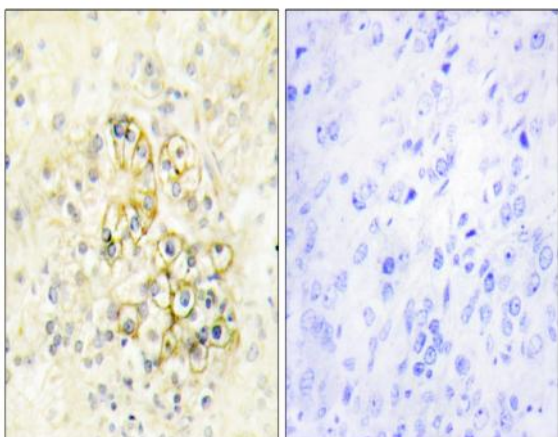
Western Blot analysis of various cells using PMEPA1 Polyclonal Antibody diluted at 1:500



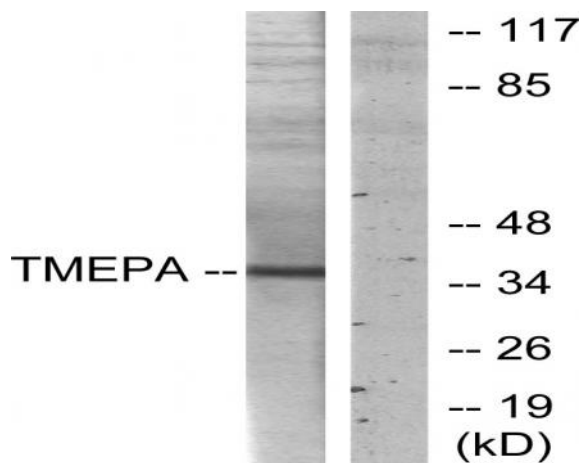
Western Blot analysis of HT29 cells using PMEPA1 Polyclonal Antibody diluted at 1:500



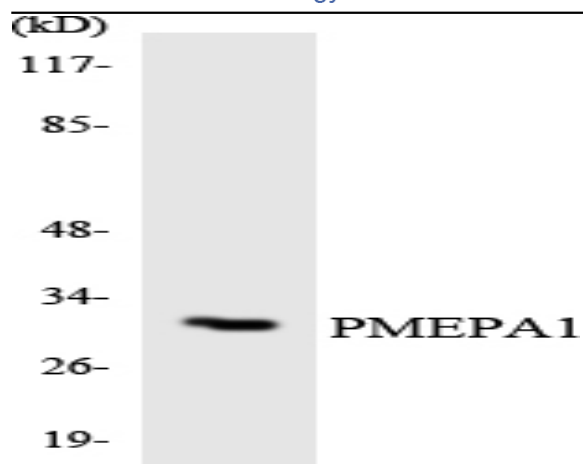
Immunofluorescence analysis of HUVEC cells, using TMEPA Antibody. The picture on the right is blocked with the synthesized peptide.



Immunohistochemistry analysis of paraffin-embedded human prostate tissue, using TMEPA Antibody. The picture on the right is blocked with the synthesized peptide.



Western blot analysis of lysates from HT-29 cells, using TMEPA Antibody. The lane on the right is blocked with the synthesized peptide.



Western blot analysis of the lysates from HeLa cells using PMEPA1 antibody.