

PLA1A Polyclonal Antibody

Catalog No :	YT3783
Reactivity :	Human;Rat;Mouse;
Applications :	WB;IHC;IF;ELISA
Target :	PLA1A
Fields :	>>Glycerophospholipid metabolism;>>Ras signaling pathway
Gene Name :	PLA1A
Protein Name :	Phospholipase A1 member A
Human Gene Id :	51365
Human Swiss Prot No :	Q53H76
Mouse Swiss Prot No :	Q8VI78
Immunogen :	The antiserum was produced against synthesized peptide derived from human PLA1A. AA range:381-430
Specificity :	PLA1A Polyclonal Antibody detects endogenous levels of PLA1A protein.
Formulation :	Liquid in PBS containing 50% glycerol, 0.5% BSA and 0.02% sodium azide.
Source :	Polyclonal, Rabbit,IgG
Dilution :	WB 1:500 - 1:2000. IHC 1:100 - 1:300. ELISA: 1:5000.. IF 1:50-200
Purification :	The antibody was affinity-purified from rabbit antiserum by affinity-chromatography using epitope-specific immunogen.
Concentration :	1 mg/ml
Storage Stability :	-15°C to -25°C/1 year(Do not lower than -25°C)

Observed Band : 45-50kD

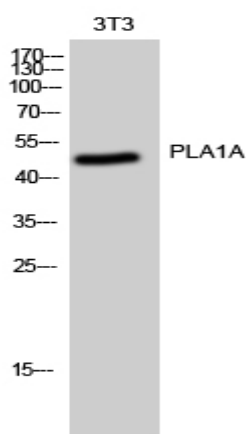
Background : The protein encoded by this gene is a phospholipase that hydrolyzes fatty acids at the sn-1 position of phosphatidylserine and 1-acyl-2-lysophosphatidylserine. This secreted protein hydrolyzes phosphatidylserine in liposomes. Three transcript variants encoding different isoforms have been found for this gene.[provided by RefSeq, May 2011],

Function : function:Hydrolyzes the ester bond at the sn-1 position of glycerophospholipids and produces 2-acyl lysophospholipids. Hydrolyzes phosphatidylserine (PS) in the form of liposomes and 1-acyl-2 lysophosphatidylserine (lyso-PS), but not triolein, phosphatidylcholine (PC), phosphatidylethanolamine (PE), phosphatidic acid (PA) or phosphatidylinositol (PI). Isoform 2 hydrolyzes lyso-PS but not PS. Hydrolysis of lyso-PS in peritoneal mast cells activated by receptors for IgE leads to stimulate histamine production.,similarity:Belongs to the AB hydrolase superfamily. Lipase family.,tissue specificity:Widely expressed. Expressed in placenta, prostate and liver. Weakly or not expressed in skin, leukocytes, platelets, colon, spleen, lung, muscle and kidney.,

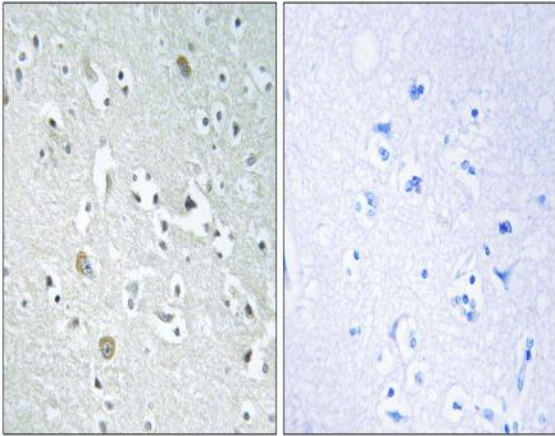
Subcellular Location : Secreted .

Expression : Widely expressed. Expressed in placenta, prostate and liver. Weakly or not expressed in skin, leukocytes, platelets, colon, spleen, lung, muscle and kidney.

Products Images



Western Blot analysis of 3T3 cells using PLA1A Polyclonal Antibody



Immunohistochemistry analysis of paraffin-embedded human brain, using PLA1A Antibody. The picture on the right is blocked with the synthesized peptide.