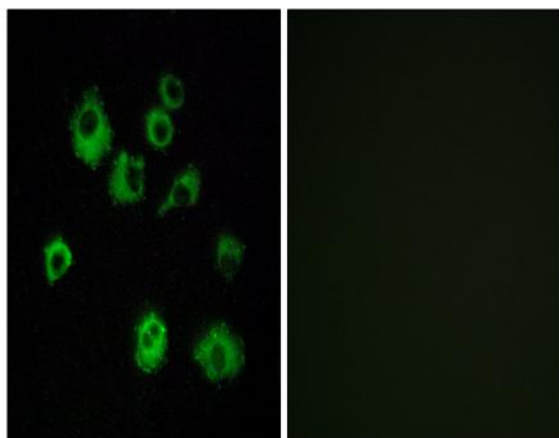


Orexin R-1 Polyclonal Antibody

Catalog No :	YT3472
Reactivity :	Human;Mouse;Rat
Applications :	IF;ELISA
Target :	Orexin R-1
Fields :	>>Neuroactive ligand-receptor interaction
Gene Name :	HCRTR1
Protein Name :	Orexin receptor type 1
Human Gene Id :	3061
Human Swiss Prot No :	O43613
Mouse Gene Id :	230777
Mouse Swiss Prot No :	P58307
Rat Gene Id :	25593
Rat Swiss Prot No :	P56718
Immunogen :	The antiserum was produced against synthesized peptide derived from human HCRTR1. AA range:298-347
Specificity :	Orexin R-1 Polyclonal Antibody detects endogenous levels of Orexin R-1 protein.
Formulation :	Liquid in PBS containing 50% glycerol, 0.5% BSA and 0.02% sodium azide.
Source :	Polyclonal, Rabbit,IgG
Dilution :	IF 1:200 - 1:1000. ELISA: 1:20000. Not yet tested in other applications.

Purification :	The antibody was affinity-purified from rabbit antiserum by affinity-chromatography using epitope-specific immunogen.
Concentration :	1 mg/ml
Storage Stability :	-15°C to -25°C/1 year(Do not lower than -25°C)
Molecularweight :	48kD
Cell Pathway :	Neuroactive ligand-receptor interaction;
Background :	The protein encoded by this gene is a G-protein coupled receptor involved in the regulation of feeding behavior. The encoded protein selectively binds the hypothalamic neuropeptide orexin A. A related gene (HCRTR2) encodes a G-protein coupled receptor that binds orexin A and orexin B. [provided by RefSeq, Jan 2009],
Function :	function:Moderately selective excitatory receptor for orexin-A and, with a lower affinity, for orexin-B neuropeptide. Seems to be exclusively coupled to the G(q) subclass of heteromeric G proteins, which activates the phospholipase C mediated signaling cascade.,similarity:Belongs to the G-protein coupled receptor 1 family.,
Subcellular Location :	Cell membrane ; Multi-pass membrane protein .
Expression :	Brain,

Products Images



Immunofluorescence analysis of MCF7 cells, using HCRTR1 Antibody. The picture on the right is blocked with the synthesized peptide.