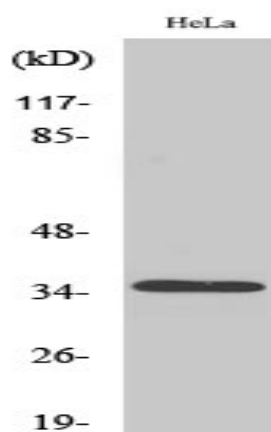


**Olfactory receptor 8J3 Polyclonal Antibody**

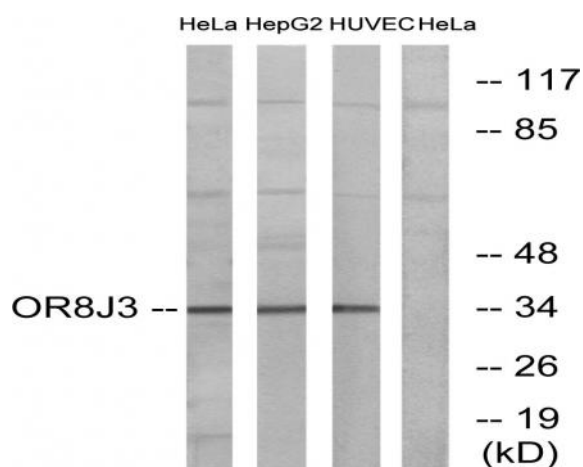
|                              |   |
|------------------------------|---|
| <b>Catalog No :</b>          | YT3449  |
| <b>Reactivity :</b>          | Human   |
| <b>Applications :</b>        | WB;IF;ELISA   |
| <b>Target :</b>              | Olfactory receptor 8J3  |
| <b>Fields :</b>              | >>Olfactory transduction  |
| <b>Gene Name :</b>           | OR8J3   |
| <b>Protein Name :</b>        | Olfactory receptor 8J3  |
| <b>Human Gene Id :</b>       | 81168   |
| <b>Human Swiss Prot No :</b> | Q8NKG0  |
| <b>Immunogen :</b>           | The antiserum was produced against synthesized peptide derived from human OR8J3. AA range:232-281                     |
| <b>Specificity :</b>         | Olfactory receptor 8J3 Polyclonal Antibody detects endogenous levels of Olfactory receptor 8J3 protein.               |
| <b>Formulation :</b>         | Liquid in PBS containing 50% glycerol, 0.5% BSA and 0.02% sodium azide.   |
| <b>Source :</b>              | Polyclonal, Rabbit,IgG  |
| <b>Dilution :</b>            | WB 1:500 - 1:2000. IF 1:200 - 1:1000. ELISA: 1:10000. Not yet tested in other applications.                           |
| <b>Purification :</b>        | The antibody was affinity-purified from rabbit antiserum by affinity-chromatography using epitope-specific immunogen. |
| <b>Concentration :</b>       | 1 mg/ml   |
| <b>Storage Stability :</b>   | -15°C to -25°C/1 year(Do not lower than -25°C)  |

|                               |   |
|-------------------------------|---|
| <b>Observed Band :</b>        | 35kD  |
| <b>Cell Pathway :</b>         | Olfactory transduction;   |
| <b>Background :</b>           | function:Odorant receptor .,similarity:Belongs to the G-protein coupled receptor 1 family., |
| <b>Function :</b>             | function:Odorant receptor .,similarity:Belongs to the G-protein coupled receptor 1 family., |
| <b>Subcellular Location :</b> | Cell membrane; Multi-pass membrane protein.   |

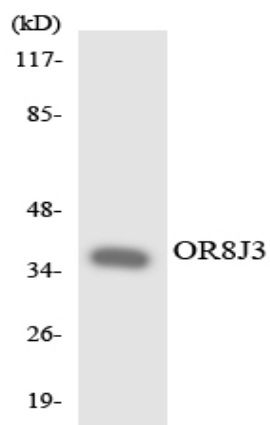
## Products Images



Western blot analysis of various cells using Olfactory receptor 8J3 Polyclonal Antibody



Western blot analysis of lysates from HeLa, HepG2, and HUVEC cells, using OR8J3 Antibody. The lane on the right is blocked with the synthesized peptide.



Western blot analysis of the lysates from K562 cells using OR8J3 antibody.