

Olfactory receptor 7C1 Polyclonal Antibody

Catalog No :	YT3435
Reactivity :	Human
Applications :	WB;IF;ELISA
Target :	Olfactory receptor 7C1
Fields :	>>Olfactory transduction
Gene Name :	OR7C1
Protein Name :	Olfactory receptor 7C1
Human Gene Id :	26664
Human Swiss Prot No :	O76099
Immunogen :	The antiserum was produced against synthesized peptide derived from human OR7C1. AA range:199-248
Specificity :	Olfactory receptor 7C1 Polyclonal Antibody detects endogenous levels of Olfactory receptor 7C1 protein.
Formulation :	Liquid in PBS containing 50% glycerol, 0.5% BSA and 0.02% sodium azide.
Source :	Polyclonal, Rabbit,IgG
Dilution :	WB 1:500 - 1:2000. IF 1:200 - 1:1000. ELISA: 1:20000. Not yet tested in other applications.
Purification :	The antibody was affinity-purified from rabbit antiserum by affinity-chromatography using epitope-specific immunogen.
Concentration :	1 mg/ml
Storage Stability :	-15°C to -25°C/1 year(Do not lower than -25°C)

Observed Band : 34kD

Cell Pathway : Olfactory transduction;

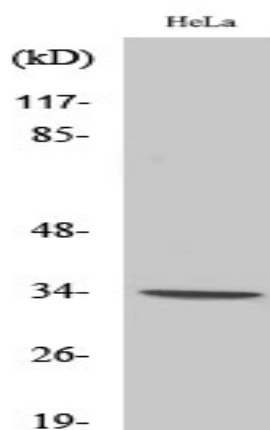
Background : olfactory receptor family 7 subfamily C member 1(OR7C1) Homo sapiens Olfactory receptors interact with odorant molecules in the nose, to initiate a neuronal response that triggers the perception of a smell. The olfactory receptor proteins are members of a large family of G-protein-coupled receptors (GPCR) arising from single coding-exon genes. Olfactory receptors share a 7-transmembrane domain structure with many neurotransmitter and hormone receptors and are responsible for the recognition and G protein-mediated transduction of odorant signals. The olfactory receptor gene family is the largest in the genome. The nomenclature assigned to the olfactory receptor genes and proteins for this organism is independent of other organisms. [provided by RefSeq, Jul 2008],

Function : function:Odorant receptor .,similarity:Belongs to the G-protein coupled receptor 1 family.,

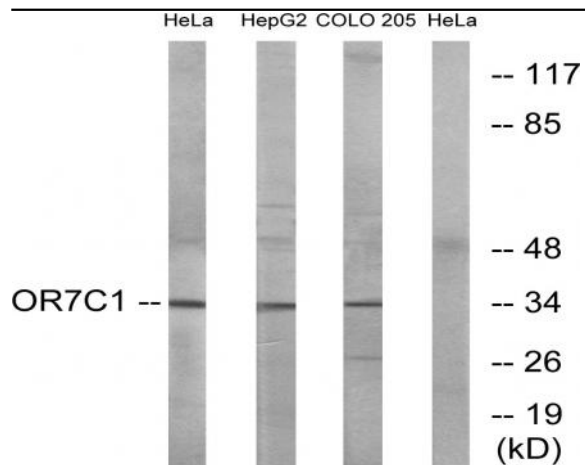
Subcellular Location : Cell membrane; Multi-pass membrane protein.

Expression : Pooled,Testis,

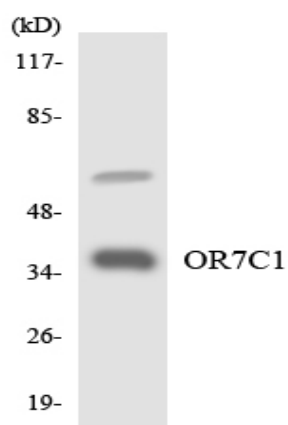
Products Images



Western Blot analysis of various cells using Olfactory receptor 7C1 Polyclonal Antibody diluted at 1:500



Western blot analysis of lysates from HeLa, HepG2, and COLO cells, using OR7C1 Antibody. The lane on the right is blocked with the synthesized peptide.



Western blot analysis of the lysates from HT-29 cells using OR7C1 antibody.