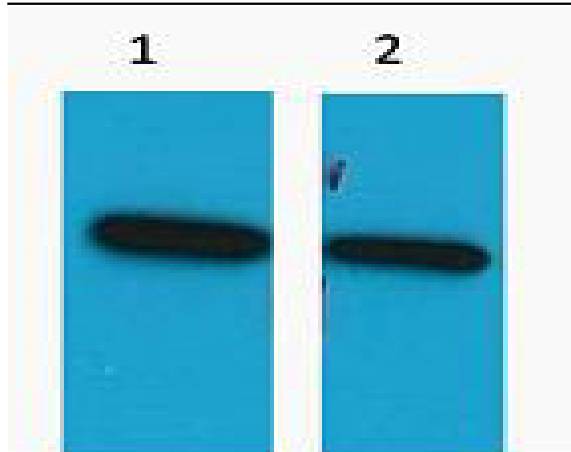


## ECFP-Tag Polyclonal Antibody

<b>Catalog No :</b>	YM3218
<b>Reactivity :</b>	Species independent
<b>Applications :</b>	WB
<b>Target :</b>	ECFP-Tag
<b>Immunogen :</b>	Recombinant Protein of ECFP-Tag
<b>Specificity :</b>	The antibody detects ECFP & CFP tag protein.
<b>Formulation :</b>	PBS, pH 7.4, containing 0.5%BSA, 0.02% sodium azide as Preservative and 50% Glycerol.
<b>Source :</b>	Polyclonal, Mouse
<b>Dilution :</b>	WB 1:2000-5000
<b>Purification :</b>	The antibody was affinity-purified from mouse antiserum by affinity-chromatography using specific immunogen.
<b>Storage Stability :</b>	-15°C to -25°C/1 year(Do not lower than -25°C)
<b>Background :</b>	Cyan Fluorescent Protein (CFP) is a genetic mutant of green fluorescent protein (GFP) originally derived from the jellyfish <i>Aequorea victoria</i> .

## Products Images



Western blot analysis of ECFP Recombinant protein, diluted at 1) 1:5000 2) 1:20000. Secondary antibody(catalog#:RS0002) was diluted at 1:20000