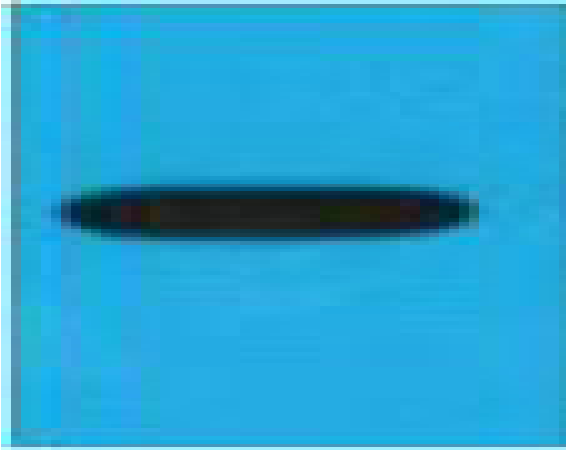


## EBFP Monoclonal Antibody(Mix)

<b>Catalog No :</b>	YM3173
<b>Reactivity :</b>	Species independent
<b>Applications :</b>	WB
<b>Target :</b>	EBFP
<b>Immunogen :</b>	Recombinant Protein of EBFP
<b>Specificity :</b>	The antibody detects EBFP & EBFP Tag protein.
<b>Formulation :</b>	PBS, pH 7.4, containing 0.5%BSA, 0.02% sodium azide as Preservative and 50% Glycerol.
<b>Source :</b>	Monoclonal, Mouse
<b>Dilution :</b>	WB 1:5000
<b>Purification :</b>	The antibody was affinity-purified from mouse ascites by affinity-chromatography using specific immunogen.
<b>Storage Stability :</b>	-15°C to -25°C/1 year(Do not lower than -25°C)
<b>Background :</b>	Enhanced Blue Fluorescent Protein (EBFP) emits a strong blue fluorescence. EBFP can be used as protein "tags" to study the sub-cellular localization of proteins and/or their translocation upon stimulation or as markers for transfection in transient and stable expression systems.

## Products Images



Western blot analysis of recombinant EBFP protein, diluted at 1:5000.