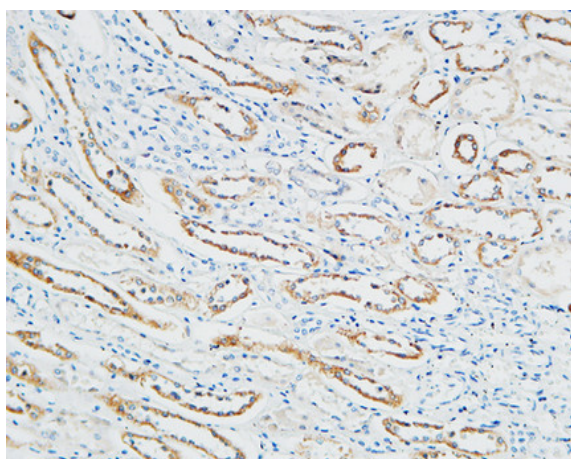


## PBF Polyclonal Antibody

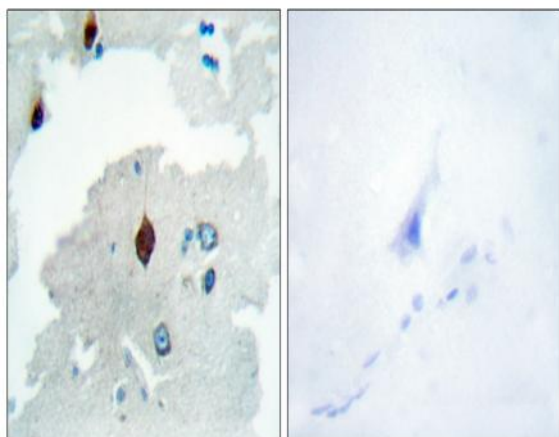
<b>Catalog No :</b>	YT3609
<b>Reactivity :</b>	Human;Mouse;Rat
<b>Applications :</b>	WB;IHC;IF;ELISA
<b>Target :</b>	PBF
<b>Gene Name :</b>	PTTG1IP
<b>Protein Name :</b>	Pituitary tumor-transforming gene 1 protein-interacting protein
<b>Human Gene Id :</b>	754
<b>Human Swiss Prot No :</b>	P53801
<b>Mouse Gene Id :</b>	108705
<b>Mouse Swiss Prot No :</b>	Q8R143
<b>Rat Gene Id :</b>	365548
<b>Rat Swiss Prot No :</b>	Q6P767
<b>Immunogen :</b>	The antiserum was produced against synthesized peptide derived from human PTTG. AA range:116-165
<b>Specificity :</b>	PBF Polyclonal Antibody detects endogenous levels of PBF protein.
<b>Formulation :</b>	Liquid in PBS containing 50% glycerol, 0.5% BSA and 0.02% sodium azide.
<b>Source :</b>	Polyclonal, Rabbit,IgG
<b>Dilution :</b>	WB 1:500 - 1:2000. IHC 1:100 - 1:300. IF 1:200 - 1:1000. ELISA: 1:10000. Not yet tested in other applications.
<b>Purification :</b>	The antibody was affinity-purified from rabbit antiserum by affinity-chromatography using epitope-specific immunogen.

<b>Concentration :</b>	1 mg/ml
<b>Storage Stability :</b>	-15°C to -25°C/1 year(Do not lower than -25°C)
<b>Observed Band :</b>	20kD
<b>Cell Pathway :</b>	Cell Cycle
<b>Background :</b>	This gene encodes a single-pass type I integral membrane protein, which binds to pituitary tumor-transforming 1 protein (PTTG1), and facilitates translocation of PTTG1 into the nucleus. Coexpression of this protein and PTTG1 induces transcriptional activation of basic fibroblast growth factor. Alternatively spliced transcript variants have been found for this gene. [provided by RefSeq, Nov 2013],
<b>Function :</b>	function:May facilitate PTTG1 nuclear translocation.,induction:By transcription factor RUNX2.,subcellular location:According to PubMed:10781616 it is found in the cytoplasm and the nucleus.,subunit:Interacts with PTTG1.,tissue specificity:Ubiquitous.,
<b>Subcellular Location :</b>	Membrane ; Single-pass type I membrane protein . Cytoplasm . Nucleus . According to PubMed:10781616, it is found in the cytoplasm and the nucleus.
<b>Expression :</b>	Ubiquitous.

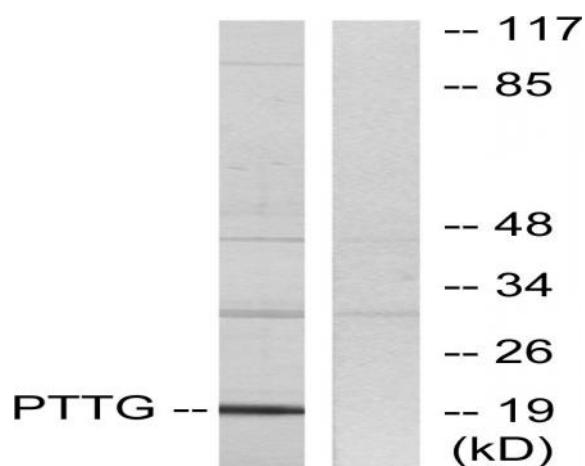
## Products Images



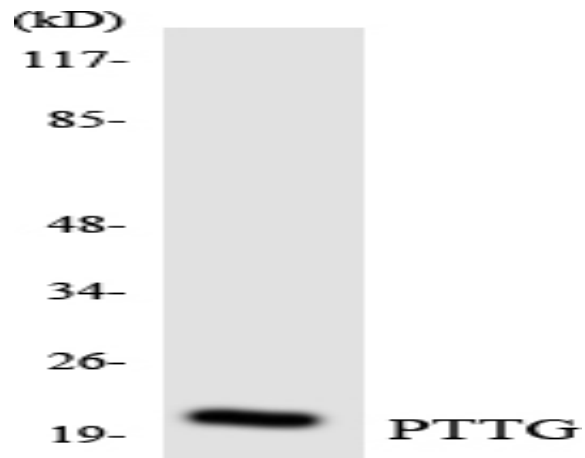
Immunohistochemical analysis of paraffin-embedded Human Right kidney. 1, Antibody was diluted at 1:100(4° overnight). 2, High-pressure and temperature EDTA, pH8.0 was used for antigen retrieval. 3,Secondary antibody was diluted at 1:200(room temperature, 30min).



Immunohistochemistry analysis of paraffin-embedded human brain tissue, using PTTG Antibody. The picture on the right is blocked with the synthesized peptide.



Western blot analysis of lysates from RAW264.7 cells, using PTTG Antibody. The lane on the right is blocked with the synthesized peptide.



Western blot analysis of the lysates from HeLa cells using PTTG antibody.