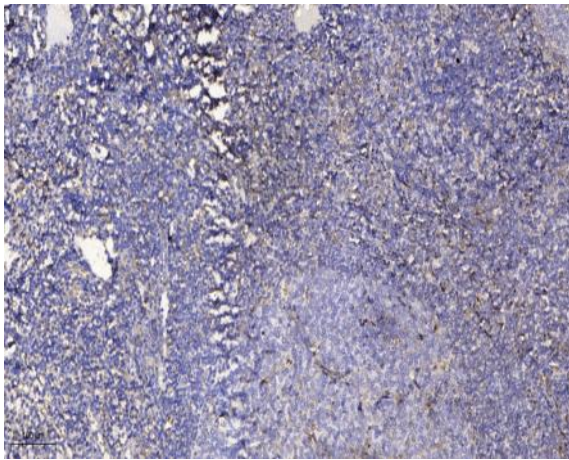


PART-1 Polyclonal Antibody

Catalog No :	YT3597
Reactivity :	Human;Rat;Mouse;
Applications :	IHC;IF;ELISA
Target :	PART-1
Gene Name :	PART1
Protein Name :	Prostate-specific and androgen-regulated protein
Human Gene Id :	25859
Human Swiss Prot No :	Q9NPD0
Immunogen :	Synthesized peptide derived from the N-terminal region of human PART-1.
Specificity :	PART-1 Polyclonal Antibody detects endogenous levels of PART-1 protein.
Formulation :	Liquid in PBS containing 50% glycerol, 0.5% BSA and 0.02% sodium azide.
Source :	Polyclonal, Rabbit,IgG
Dilution :	IHC 1:100 - 1:300. ELISA: 1:10000.. IF 1:50-200
Purification :	The antibody was affinity-purified from rabbit antiserum by affinity-chromatography using epitope-specific immunogen.
Concentration :	1 mg/ml
Storage Stability :	-15°C to -25°C/1 year(Do not lower than -25°C)
Molecularweight :	7kD
Background :	PART1 is induced by androgen in prostate adenocarcinoma cells. Multiple alternatively transcript variants have been described for this gene, none of which are predicted to encode a protein product.

Products Images



Immunohistochemical analysis of paraffin-embedded human tonsil. 1, Antibody was diluted at 1:200(4° overnight). 2, Tris-EDTA,pH9.0 was used for antigen retrieval. 3,Secondary antibody was diluted at 1:200(room temperature, 30min).