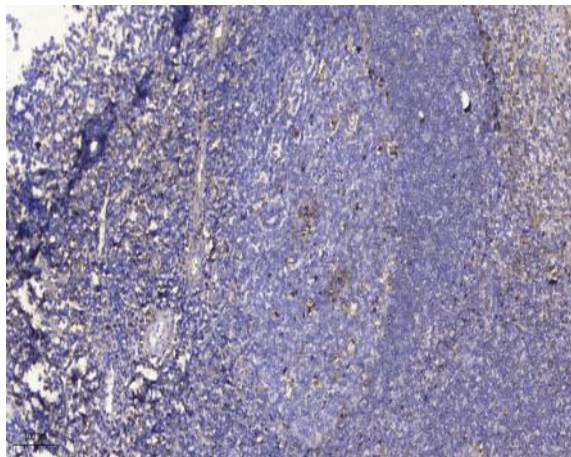


**PAGE-3 Polyclonal Antibody**

<b>Catalog No :</b>	YT3567
<b>Reactivity :</b>	Human;Rat;Mouse;
<b>Applications :</b>	IHC;IF;ELISA
<b>Target :</b>	PAGE-3
<b>Gene Name :</b>	PAGE3
<b>Protein Name :</b>	Putative G antigen family D member 1
<b>Human Gene Id :</b>	139793
<b>Human Swiss Prot No :</b>	Q5JUK9
<b>Immunogen :</b>	Synthesized peptide derived from PAGE-3 . at AA range: 40-120
<b>Specificity :</b>	PAGE-3 Polyclonal Antibody detects endogenous levels of PAGE-3 protein.
<b>Formulation :</b>	Liquid in PBS containing 50% glycerol, 0.5% BSA and 0.02% sodium azide.
<b>Source :</b>	Polyclonal, Rabbit,IgG
<b>Dilution :</b>	IHC 1:100 - 1:300. ELISA: 1:5000.. IF 1:50-200
<b>Purification :</b>	The antibody was affinity-purified from rabbit antiserum by affinity-chromatography using epitope-specific immunogen.
<b>Concentration :</b>	1 mg/ml
<b>Storage Stability :</b>	-15 °C to -25 °C/1 year(Do not lower than -25 °C)
<b>Molecularweight :</b>	12kD
<b>Background :</b>	This gene is a member of family of proteins that are expressed in a variety of tumors and in some fetal and reproductive tissues. Multiple alternatively spliced transcript variants have been observed. [provided by RefSeq, Jan 2015],

**Function :** similarity:Belongs to the GAGE family.,

## Products Images



Immunohistochemical analysis of paraffin-embedded human tonsil. 1, Antibody was diluted at 1:200(4° overnight). 2, Tris-EDTA,pH9.0 was used for antigen retrieval. 3,Secondary antibody was diluted at 1:200(room temperature, 30min).