

ORAOV1 Polyclonal Antibody

Catalog No :	YT3468
Reactivity :	Human;Rat;Mouse;
Applications :	WB;IHC;IF;ELISA
Target :	ORAOV1
Gene Name :	ORAOV1
Protein Name :	Oral cancer-overexpressed protein 1
Human Gene Id :	220064
Human Swiss Prot No :	Q8WV07
Mouse Swiss Prot No :	Q8CH62
Immunogen :	The antiserum was produced against synthesized peptide derived from human ORAV1. AA range:81-130
Specificity :	ORAOV1 Polyclonal Antibody detects endogenous levels of ORAOV1 protein.
Formulation :	Liquid in PBS containing 50% glycerol, 0.5% BSA and 0.02% sodium azide.
Source :	Polyclonal, Rabbit,IgG
Dilution :	WB 1:500 - 1:2000. IHC 1:100 - 1:300. IF 1:200 - 1:1000. ELISA: 1:10000. Not yet tested in other applications.
Purification :	The antibody was affinity-purified from rabbit antiserum by affinity-chromatography using epitope-specific immunogen.
Concentration :	1 mg/ml
Storage Stability :	-15°C to -25°C/1 year(Do not lower than -25°C)
Observed Band :	15kD

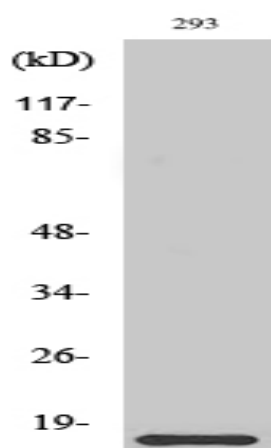
Background : miscellaneous:Amplified and overexpressed in oral cancer cells.,similarity:Belongs to the ORAOV1 family.,tissue specificity:Widely expressed. Highly expressed in placenta, kidney and skeletal muscle.,

Function : miscellaneous:Amplified and overexpressed in oral cancer cells.,similarity:Belongs to the ORAOV1 family.,tissue specificity:Widely expressed. Highly expressed in placenta, kidney and skeletal muscle.,

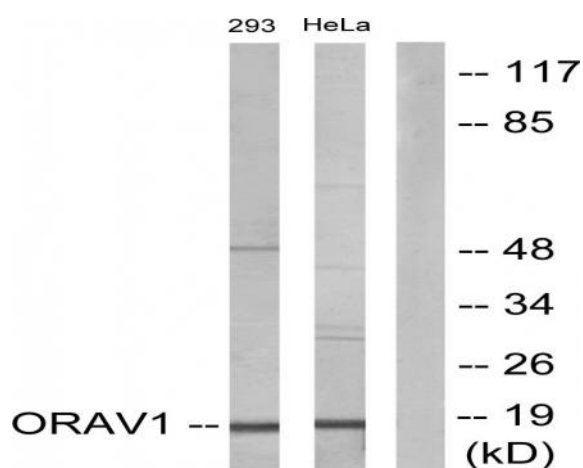
Subcellular Location : Nucleus .

Expression : Widely expressed. Highly expressed in placenta, kidney and skeletal muscle.

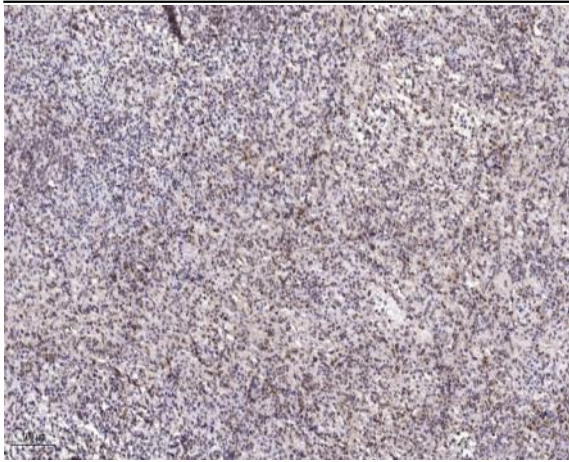
Products Images



Western Blot analysis of various cells using ORAOV1 Polyclonal Antibody diluted at 1:2000



Western blot analysis of lysates from 293 and HeLa cells, using ORAV1 Antibody. The lane on the right is blocked with the synthesized peptide.



Immunohistochemical analysis of paraffin-embedded human spleen. 1, Antibody was diluted at 1:200(4° overnight). 2, Tris-EDTA,pH9.0 was used for antigen retrieval. 3,Secondary antibody was diluted at 1:200(room temperature, 45min).