

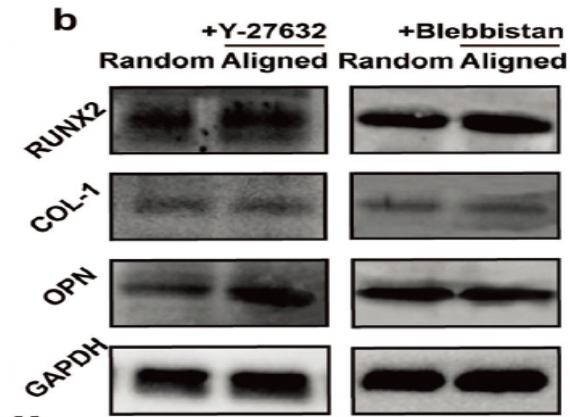
## OPN Polyclonal Antibody

<b>Catalog No :</b>	YT3467
<b>Reactivity :</b>	Human;Mouse;Rat
<b>Applications :</b>	WB;IHC;IF;ELISA
<b>Target :</b>	OPN
<b>Fields :</b>	>>PI3K-Akt signaling pathway;>>Apelin signaling pathway;>>Focal adhesion;>>ECM-receptor interaction;>>Toll-like receptor signaling pathway;>>GnRH secretion;>>Human papillomavirus infection
<b>Gene Name :</b>	SPP1
<b>Protein Name :</b>	Osteopontin
<b>Human Gene Id :</b>	6696
<b>Human Swiss Prot No :</b>	P10451
<b>Mouse Gene Id :</b>	20750
<b>Mouse Swiss Prot No :</b>	P10923
<b>Rat Gene Id :</b>	25353
<b>Rat Swiss Prot No :</b>	P08721
<b>Immunogen :</b>	The antiserum was produced against synthesized peptide derived from human Osteopontin. AA range:261-310
<b>Specificity :</b>	OPN Polyclonal Antibody detects endogenous levels of OPN protein.
<b>Formulation :</b>	Liquid in PBS containing 50% glycerol, 0.5% BSA and 0.02% sodium azide.
<b>Source :</b>	Polyclonal, Rabbit,IgG
<b>Dilution :</b>	WB 1:500-2000;IHC 1:100-500;IF ICC 1:100-500;ELISA 1:5000-20000

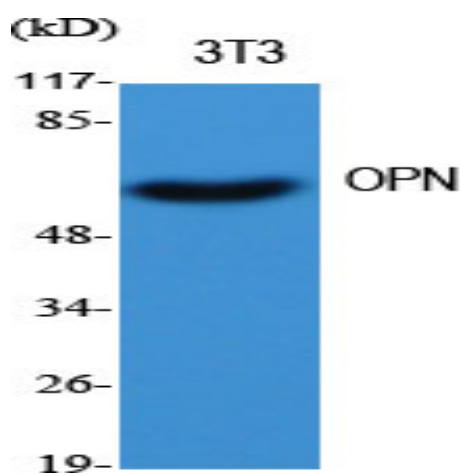
<b>Purification :</b>	The antibody was affinity-purified from rabbit antiserum by affinity-chromatography using epitope-specific immunogen.
<b>Concentration :</b>	1 mg/ml
<b>Storage Stability :</b>	-15°C to -25°C/1 year(Do not lower than -25°C)
<b>Observed Band :</b>	60kD
<b>Cell Pathway :</b>	Focal adhesion;ECM-receptor interaction;Toll_Like;
<b>Background :</b>	secreted phosphoprotein 1(SPP1) Homo sapiens The protein encoded by this gene is involved in the attachment of osteoclasts to the mineralized bone matrix. The encoded protein is secreted and binds hydroxyapatite with high affinity. The osteoclast vitronectin receptor is found in the cell membrane and may be involved in the binding to this protein. This protein is also a cytokine that upregulates expression of interferon-gamma and interleukin-12. Several transcript variants encoding different isoforms have been found for this gene. [provided by RefSeq, Oct 2011],
<b>Function :</b>	disease:This protein plays a principal role in urinary stone formation as the stone matrix.,function:Acts as a cytokine involved in enhancing production of interferon-gamma and interleukin-12 and reducing production of interleukin-10 and is essential in the pathway that leads to type I immunity.,function:Binds tightly to hydroxyapatite. Appears to form an integral part of the mineralized matrix. Probably important to cell-matrix interaction.,online information:Osteopontin entry,PTM:Extensively phosphorylated on clustered serine residues.,PTM:N- and O-glycosylated.,similarity:Belongs to the osteopontin family.,subunit:Ligand for integrin alpha-V/beta-3.,
<b>Subcellular Location :</b>	Secreted.
<b>Expression :</b>	Bone. Found in plasma.

---

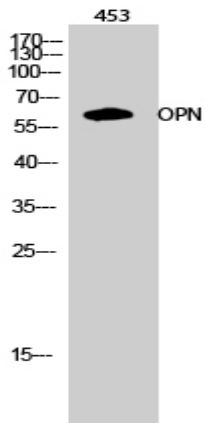
## Products Images



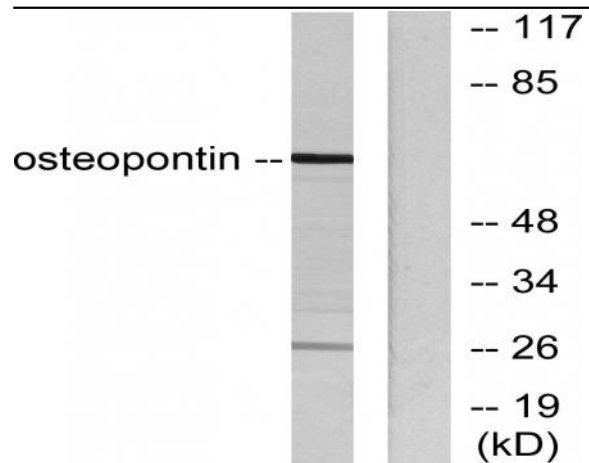
4D Printing of Personalized-Tunable Biomimetic Periosteum with Anisotropic Microstructure for Accelerated Vascularization and Bone Healing. Mengfei Yu WB Human human mesenchymal stem cells (hMSCs)



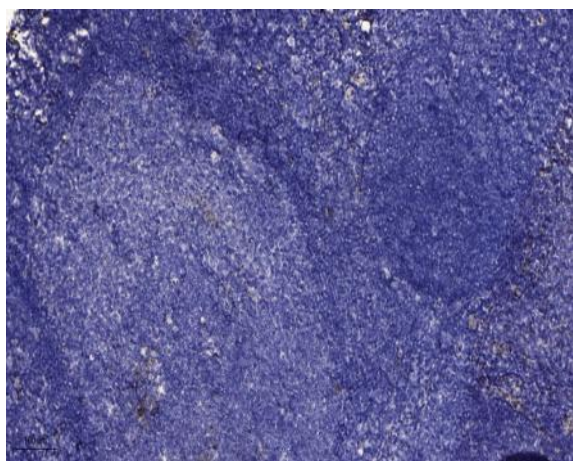
Western Blot analysis of various cells using OPN Polyclonal Antibody diluted at 1:500



Western Blot analysis of 453 cells using OPN Polyclonal Antibody diluted at 1:500



Western blot analysis of lysates from LOVO cells, using Osteopontin Antibody. The lane on the right is blocked with the synthesized peptide.



Immunohistochemical analysis of paraffin-embedded human tonsil. 1, Antibody was diluted at 1:200(4° overnight). 2, Tris-EDTA,pH9.0 was used for antigen retrieval. 3,Secondary antibody was diluted at 1:200(room temperature, 30min).