

## OGCP Polyclonal Antibody

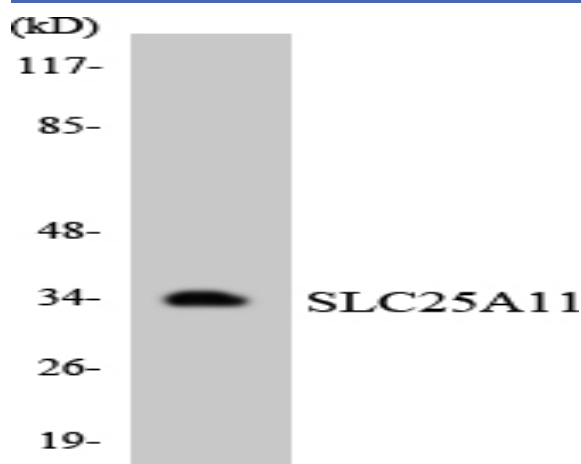
<b>Catalog No :</b>	YT3239
<b>Reactivity :</b>	Human;Mouse;Rat
<b>Applications :</b>	WB;ELISA
<b>Target :</b>	OGCP
<b>Gene Name :</b>	SLC25A11
<b>Protein Name :</b>	Mitochondrial 2-oxoglutarate/malate carrier protein
<b>Human Gene Id :</b>	8402
<b>Human Swiss Prot No :</b>	Q02978
<b>Mouse Gene Id :</b>	67863
<b>Mouse Swiss Prot No :</b>	Q9CR62
<b>Rat Gene Id :</b>	64201
<b>Rat Swiss Prot No :</b>	P97700
<b>Immunogen :</b>	The antiserum was produced against synthesized peptide derived from human SLC25A11. AA range:132-181
<b>Specificity :</b>	OGCP Polyclonal Antibody detects endogenous levels of OGCP protein.
<b>Formulation :</b>	Liquid in PBS containing 50% glycerol, 0.5% BSA and 0.02% sodium azide.
<b>Source :</b>	Polyclonal, Rabbit,IgG
<b>Dilution :</b>	WB 1:500 - 1:2000. ELISA: 1:10000. Not yet tested in other applications.
<b>Purification :</b>	The antibody was affinity-purified from rabbit antiserum by affinity-chromatography using epitope-specific immunogen.

---

<b>Concentration :</b>	1 mg/ml
<b>Storage Stability :</b>	-15°C to -25°C/1 year(Do not lower than -25°C)
<b>Observed Band :</b>	35kD
<b>Background :</b>	The oxoglutarate/malate carrier transports 2-oxoglutarate across the inner membranes of mitochondria in an electroneutral exchange for malate or other dicarboxylic acids (summary by Iacobazzi et al., 1992 [PubMed 1457818]).[supplied by OMIM, Jan 2011],
<b>Function :</b>	function:Catalyzes the transport of 2-oxoglutarate across the inner mitochondrial membrane in an electroneutral exchange for malate or other dicarboxylic acids, and plays an important role in several metabolic processes, including the malate-aspartate shuttle, the oxoglutarate/isocitrate shuttle, in gluconeogenesis from lactate, and in nitrogen metabolism.,similarity:Belongs to the mitochondrial carrier family.,similarity:Contains 3 Solcar repeats.,
<b>Subcellular Location :</b>	Mitochondrion inner membrane ; Multi-pass membrane protein .
<b>Expression :</b>	B-cell lymphoma,Brain,Muscle,Tongue,Uterus,

---

## Products Images



Western blot analysis of the lysates from HepG2 cells using SLC25A11 antibody.