

## OATP1 Polyclonal Antibody

<b>Catalog No :</b>	YT3221
<b>Reactivity :</b>	Human
<b>Applications :</b>	WB;IHC;IF;ELISA
<b>Target :</b>	OATP1
<b>Fields :</b>	>>Bile secretion
<b>Gene Name :</b>	SLCO1A2
<b>Protein Name :</b>	Solute carrier organic anion transporter family member 1A2
<b>Human Gene Id :</b>	6579
<b>Human Swiss Prot No :</b>	P46721
<b>Immunogen :</b>	The antiserum was produced against synthesized peptide derived from human SLCO1A2. AA range:251-300
<b>Specificity :</b>	OATP1 Polyclonal Antibody detects endogenous levels of OATP1 protein.
<b>Formulation :</b>	Liquid in PBS containing 50% glycerol, 0.5% BSA and 0.02% sodium azide.
<b>Source :</b>	Polyclonal, Rabbit,IgG
<b>Dilution :</b>	WB 1:500 - 1:2000. IHC 1:100 - 1:300. ELISA: 1:20000.. IF 1:50-200
<b>Purification :</b>	The antibody was affinity-purified from rabbit antiserum by affinity-chromatography using epitope-specific immunogen.
<b>Concentration :</b>	1 mg/ml
<b>Storage Stability :</b>	-15°C to -25°C/1 year(Do not lower than -25°C)
<b>Observed Band :</b>	80kD

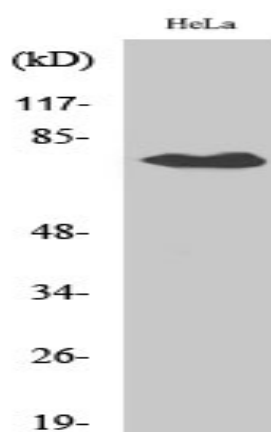
**Background :** This gene encodes a sodium-independent transporter which mediates cellular uptake of organic ions in the liver. Its substrates include bile acids, bromosulphophthalein, and some steroidal compounds. The protein is a member of the SLC21A family of solute carriers. Alternative splicing of this gene results in multiple transcript variants. [provided by RefSeq, Dec 2008],

**Function :** function:Mediates the Na(+)-independent transport of organic anions such as sulfobromophthalein (BSP) and conjugated (taurocholate) and unconjugated (cholate) bile acids.,similarity:Belongs to the organo anion transporter (TC 2.A.60) family.,

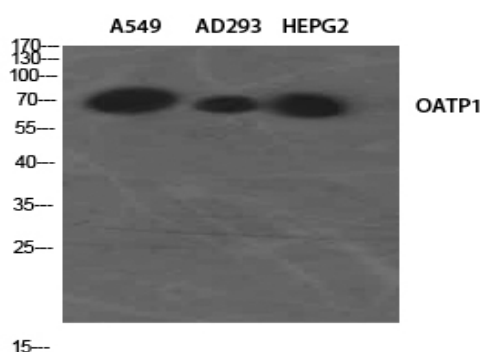
**Subcellular Location :** Cell membrane; Multi-pass membrane protein.

**Expression :** Brain,Liver,Teratocarcinoma,

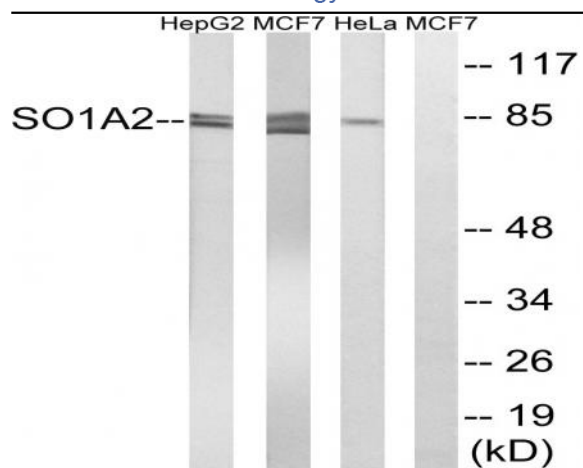
## Products Images



Western Blot analysis of various cells using OATP1 Polyclonal Antibody diluted at 1:2000



Western Blot analysis of A549 AD293 HEPG2 using OATP1 Polyclonal Antibody. Antibody was diluted at 1:2000



Western blot analysis of lysates from HeLa, MCF-7, and HepG2 cells, using SLCO1A2 Antibody. The lane on the right is blocked with the synthesized peptide.