

## Nur77 Polyclonal Antibody

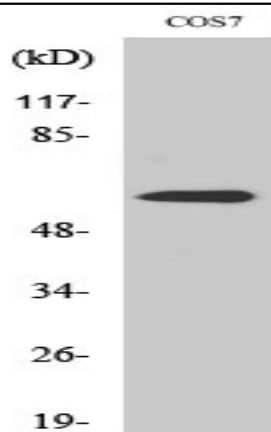
<b>Catalog No :</b>	YT3213
<b>Reactivity :</b>	Human;Mouse;Rat;Monkey
<b>Applications :</b>	WB;IHC;IF;ELISA
<b>Target :</b>	Nur77
<b>Fields :</b>	>>MAPK signaling pathway;>>PI3K-Akt signaling pathway;>>Aldosterone synthesis and secretion;>>Cortisol synthesis and secretion;>>Cushing syndrome
<b>Gene Name :</b>	NR4A1
<b>Protein Name :</b>	Nuclear receptor subfamily 4 group A member 1
<b>Human Gene Id :</b>	3164
<b>Human Swiss Prot No :</b>	P22736
<b>Mouse Gene Id :</b>	15370
<b>Mouse Swiss Prot No :</b>	P12813
<b>Rat Gene Id :</b>	79240
<b>Rat Swiss Prot No :</b>	P22829
<b>Immunogen :</b>	The antiserum was produced against synthesized peptide derived from human Nuclear Receptor NR4A1. AA range:317-366
<b>Specificity :</b>	Nur77 Polyclonal Antibody detects endogenous levels of Nur77 protein.
<b>Formulation :</b>	Liquid in PBS containing 50% glycerol, 0.5% BSA and 0.02% sodium azide.
<b>Source :</b>	Polyclonal, Rabbit,IgG
<b>Dilution :</b>	WB 1:500 - 1:2000. IHC 1:100 - 1:300. ELISA: 1:10000.. IF 1:50-200

---

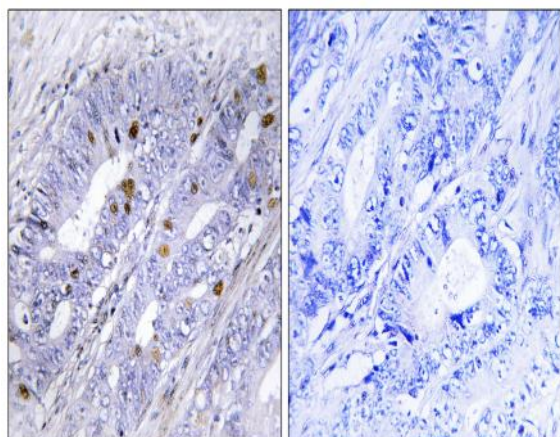
<b>Purification :</b>	The antibody was affinity-purified from rabbit antiserum by affinity-chromatography using epitope-specific immunogen.
<b>Concentration :</b>	1 mg/ml
<b>Storage Stability :</b>	-15°C to -25°C/1 year(Do not lower than -25°C)
<b>Observed Band :</b>	65-70kD
<b>Cell Pathway :</b>	MAPK_ERK_Growth;MAPK_G_Protein;
<b>Background :</b>	This gene encodes a member of the steroid-thyroid hormone-retinoid receptor superfamily. Expression is induced by phytohemagglutinin in human lymphocytes and by serum stimulation of arrested fibroblasts. The encoded protein acts as a nuclear transcription factor. Translocation of the protein from the nucleus to mitochondria induces apoptosis. Multiple transcript variants encoding different isoforms have been found for this gene. [provided by RefSeq, Jan 2011],
<b>Function :</b>	function:Orphan nuclear receptor.,induction:By growth-stimulating agents.,similarity:Belongs to the nuclear hormone receptor family.,similarity:Belongs to the nuclear hormone receptor family. NR4 subfamily.,similarity:Contains 1 nuclear receptor DNA-binding domain.,subunit:Interacts with GADD45GIP1.,tissue specificity:Fetal muscle and adult liver, brain and thyroid.,
<b>Subcellular Location :</b>	Nucleus . Cytoplasm . Mitochondrion . Nuclear export to the cytoplasm is XPO1-mediated and positively regulated by IFI27 (PubMed:22427340). Translocation to the mitochondrion upon interaction with RXRA and upon the presence of 9-cis retinoic acid (PubMed:17761950). .
<b>Expression :</b>	Fetal muscle and adult liver, brain and thyroid.

---

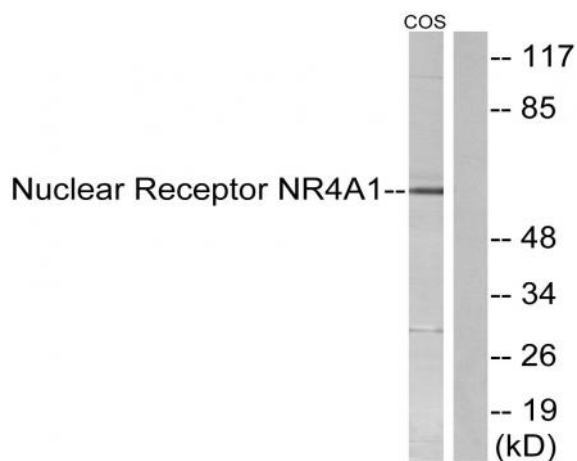
## Products Images



Western Blot analysis of COS7 cells using Nur77 Polyclonal Antibody cells nucleus extracted by Minute™ Cytoplasmic and Nuclear Fractionation kit (SC-003, Inventbiotech, MN, USA).



Immunohistochemistry analysis of paraffin-embedded human colon carcinoma tissue, using Nuclear Receptor NR4A1 Antibody. The picture on the right is blocked with the synthesized peptide.



Western blot analysis of lysates from COS7 cells, using Nuclear Receptor NR4A1 Antibody. The lane on the right is blocked with the synthesized peptide.