

Olfactory receptor 52E5 Polyclonal Antibody

Catalog No :	YT3381
Reactivity :	Human;Rat;Mouse;
Applications :	WB;IF;ELISA
Target :	Olfactory receptor 52E5
Fields :	>>Olfactory transduction
Gene Name :	OR52E5
Protein Name :	Olfactory receptor 52E5
Human Gene Id :	390082
Human Swiss Prot No :	Q8NH55
Immunogen :	The antiserum was produced against synthesized peptide derived from human OR52E5. AA range:199-248
Specificity :	Olfactory receptor 52E5 Polyclonal Antibody detects endogenous levels of Olfactory receptor 52E5 protein.
Formulation :	Liquid in PBS containing 50% glycerol, 0.5% BSA and 0.02% sodium azide.
Source :	Polyclonal, Rabbit,IgG
Dilution :	WB 1:500 - 1:2000. IF 1:200 - 1:1000. ELISA: 1:20000. Not yet tested in other applications.
Purification :	The antibody was affinity-purified from rabbit antiserum by affinity-chromatography using epitope-specific immunogen.
Concentration :	1 mg/ml
Storage Stability :	-15°C to -25°C/1 year(Do not lower than -25°C)

Observed Band : 36kD

Background :

Olfactory receptors interact with odorant molecules in the nose, to initiate a neuronal response that triggers the perception of a smell. The olfactory receptor proteins are members of a large family of G-protein-coupled receptors (GPCR) arising from single coding-exon genes. Olfactory receptors share a 7-transmembrane domain structure with many neurotransmitter and hormone receptors and are responsible for the recognition and G protein-mediated transduction of odorant signals. The olfactory receptor gene family is the largest in the genome. The nomenclature assigned to the olfactory receptor genes and proteins for this organism is independent of other organisms. [provided by RefSeq, Jul 2008],

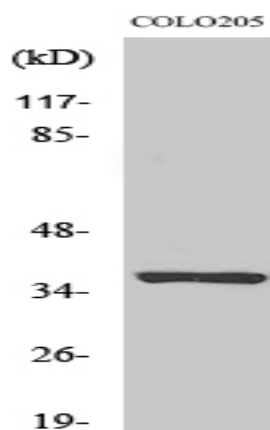
Function :

function:Odorant receptor .,similarity:Belongs to the G-protein coupled receptor 1 family.,

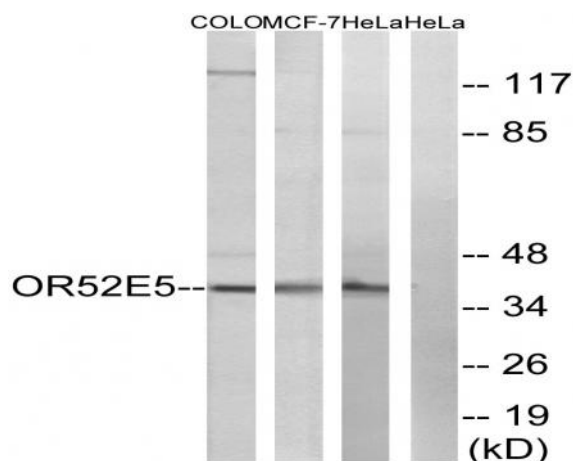
Subcellular Location :

Cell membrane; Multi-pass membrane protein.

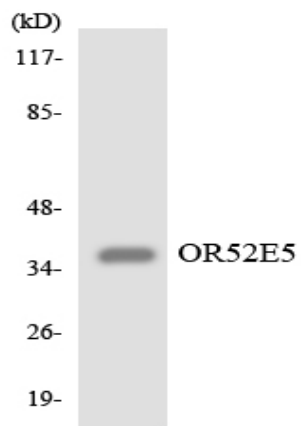
Products Images



Western Blot analysis of various cells using Olfactory receptor 52E5 Polyclonal Antibody



Western blot analysis of lysates from COLO, MCF-7, and HeLa cells, using OR52E5 Antibody. The lane on the right is blocked with the synthesized peptide.



Western blot analysis of the lysates from HeLa cells using OR52E5 antibody.