

## Nidogen Polyclonal Antibody

<b>Catalog No :</b>	YT3126
<b>Reactivity :</b>	Human;Mouse;Rat
<b>Applications :</b>	WB;ELISA
<b>Target :</b>	Nidogen
<b>Gene Name :</b>	NID1
<b>Protein Name :</b>	Nidogen-1
<b>Human Gene Id :</b>	4811
<b>Human Swiss Prot No :</b>	P14543
<b>Mouse Gene Id :</b>	18073
<b>Mouse Swiss Prot No :</b>	P10493
<b>Rat Swiss Prot No :</b>	P08460
<b>Immunogen :</b>	The antiserum was produced against synthesized peptide derived from human NID1. AA range:219-268
<b>Specificity :</b>	Nidogen Polyclonal Antibody detects endogenous levels of Nidogen protein.
<b>Formulation :</b>	Liquid in PBS containing 50% glycerol, 0.5% BSA and 0.02% sodium azide.
<b>Source :</b>	Polyclonal, Rabbit,IgG
<b>Dilution :</b>	WB 1:500 - 1:2000. ELISA: 1:20000. Not yet tested in other applications.
<b>Purification :</b>	The antibody was affinity-purified from rabbit antiserum by affinity-chromatography using epitope-specific immunogen.
<b>Concentration :</b>	1 mg/ml

**Storage Stability :** -15°C to -25°C/1 year(Do not lower than -25°C)

**Observed Band :** 136kD

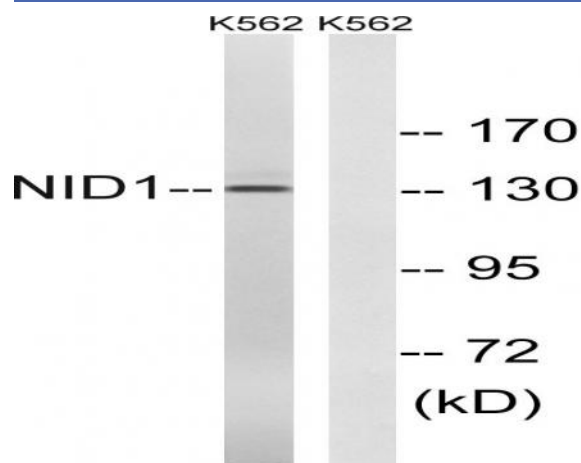
**Background :** nidogen 1(NID1) Homo sapiens This gene encodes a member of the nidogen family of basement membrane glycoproteins. The protein interacts with several other components of basement membranes, and may play a role in cell interactions with the extracellular matrix. [provided by RefSeq, Jul 2008],

**Function :** function:Sulfated glycoprotein widely distributed in basement membranes and tightly associated with laminin. Also binds to collagen IV and perlecan. It probably has a role in cell-extracellular matrix interactions.,PTM:N- and O-glycosylated.,similarity:Contains 1 NIDO domain.,similarity:Contains 1 nidogen G2 beta-barrel domain.,similarity:Contains 1 thyroglobulin type-1 domain.,similarity:Contains 4 LDL-receptor class B repeats.,similarity:Contains 6 EGF-like domains.,subunit:Interacts with FBLN1 and LGALS3BP.,

**Subcellular Location :** Secreted, extracellular space, extracellular matrix, basement membrane.

**Expression :** Brain,Placenta,Testis,

## Products Images



Western blot analysis of lysates from K562 cells, using NID1 Antibody. The lane on the right is blocked with the synthesized peptide.