

NICE4 Polyclonal Antibody

Catalog No :	YT3125
Reactivity :	Human;Mouse
Applications :	WB;ELISA
Target :	NICE4
Gene Name :	UBAP2L
Protein Name :	Ubiquitin-associated protein 2-like
Human Gene Id :	9898
Human Swiss Prot No :	Q14157
Mouse Gene Id :	74383
Mouse Swiss Prot No :	Q80X50
Immunogen :	The antiserum was produced against synthesized peptide derived from human UBAP2L. AA range:561-610
Specificity :	NICE4 Polyclonal Antibody detects endogenous levels of NICE4 protein.
Formulation :	Liquid in PBS containing 50% glycerol, 0.5% BSA and 0.02% sodium azide.
Source :	Polyclonal, Rabbit,IgG
Dilution :	WB 1:500 - 1:2000. ELISA: 1:20000. Not yet tested in other applications.
Purification :	The antibody was affinity-purified from rabbit antiserum by affinity-chromatography using epitope-specific immunogen.
Concentration :	1 mg/ml
Storage Stability :	-15°C to -25°C/1 year(Do not lower than -25°C)

Observed Band : 115kD

Background : PTM:Phosphorylated upon DNA damage, probably by ATM or ATR.,similarity:Contains 1 UBA domain.,tissue specificity:Ubiquitous.,

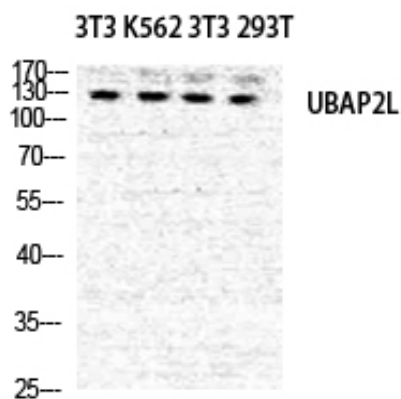
Function : PTM:Phosphorylated upon DNA damage, probably by ATM or ATR.,similarity:Contains 1 UBA domain.,tissue specificity:Ubiquitous.,

Subcellular Location : Cytoplasm, Stress granule .

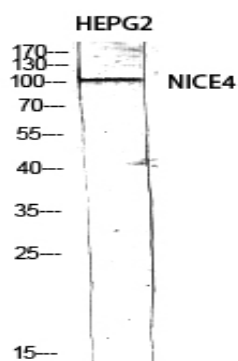
Location :

Expression : Ubiquitous.

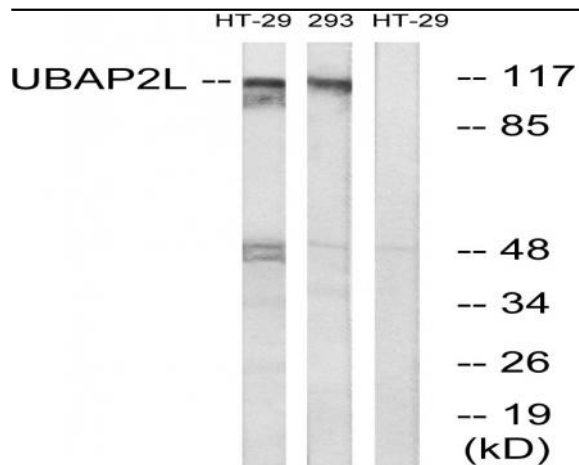
Products Images



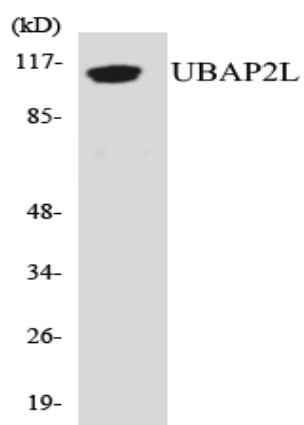
Western Blot analysis of NIH-3T3 K562 NIH-3T3 293T cells using NICE4 Polyclonal Antibody diluted at 1:500



Western Blot analysis of HEPG2 using NICE4 Polyclonal Antibody diluted at 1:500



Western blot analysis of lysates from HT-29 and 293 cells, using UBAP2L Antibody. The lane on the right is blocked with the synthesized peptide.



Western blot analysis of the lysates from Jurkat cells using UBAP2L antibody.