

Olfactory receptor 4K14 Polyclonal Antibody

Catalog No :	YT3347
Reactivity :	Human;Monkey
Applications :	WB;ELISA
Target :	Olfactory receptor 4K14
Fields :	>>Olfactory transduction
Gene Name :	OR4K14
Protein Name :	Olfactory receptor 4K14
Human Gene Id :	122740
Human Swiss Prot No :	Q8NGD5
Immunogen :	The antiserum was produced against synthesized peptide derived from human OR4K14. AA range:261-310
Specificity :	Olfactory receptor 4K14 Polyclonal Antibody detects endogenous levels of Olfactory receptor 4K14 protein.
Formulation :	Liquid in PBS containing 50% glycerol, 0.5% BSA and 0.02% sodium azide.
Source :	Polyclonal, Rabbit,IgG
Dilution :	WB 1:500 - 1:2000. ELISA: 1:10000. Not yet tested in other applications.
Purification :	The antibody was affinity-purified from rabbit antiserum by affinity-chromatography using epitope-specific immunogen.
Concentration :	1 mg/ml
Storage Stability :	-15°C to -25°C/1 year(Do not lower than -25°C)
Observed Band :	37kD

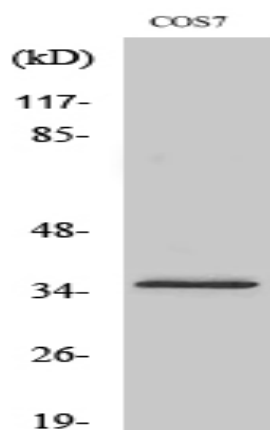
Cell Pathway : Olfactory transduction;

Background : Olfactory receptors interact with odorant molecules in the nose, to initiate a neuronal response that triggers the perception of a smell. The olfactory receptor proteins are members of a large family of G-protein-coupled receptors (GPCR) arising from single coding-exon genes. Olfactory receptors share a 7-transmembrane domain structure with many neurotransmitter and hormone receptors and are responsible for the recognition and G protein-mediated transduction of odorant signals. The olfactory receptor gene family is the largest in the genome. The nomenclature assigned to the olfactory receptor genes and proteins for this organism is independent of other organisms. [provided by RefSeq, Jul 2008],

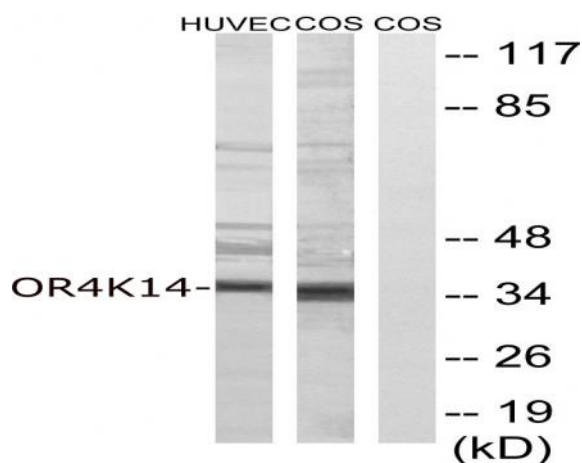
Function : function:Odorant receptor .,similarity:Belongs to the G-protein coupled receptor 1 family.,

Subcellular Location : Cell membrane; Multi-pass membrane protein.

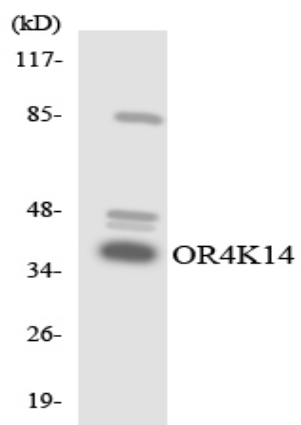
Products Images



Western Blot analysis of various cells using Olfactory receptor 4K14 Polyclonal Antibody diluted at 1:2000



Western blot analysis of lysates from COS7 and HUVEC cells, using OR4K14 Antibody. The lane on the right is blocked with the synthesized peptide.



Western blot analysis of the lysates from COLO205 cells using OR4K14 antibody.