

## Neurocan Polyclonal Antibody

<b>Catalog No :</b>	YT3064
<b>Reactivity :</b>	Human;Rat;Mouse;
<b>Applications :</b>	WB;IHC
<b>Target :</b>	Neurocan
<b>Gene Name :</b>	NCAN
<b>Protein Name :</b>	Neurocan core protein
<b>Human Gene Id :</b>	1463
<b>Human Swiss Prot No :</b>	O14594
<b>Mouse Swiss Prot No :</b>	P55066
<b>Immunogen :</b>	Synthesized peptide derived from Neurocan . at AA range: 370-450
<b>Specificity :</b>	Neurocan Polyclonal Antibody detects endogenous levels of Neurocan protein.
<b>Formulation :</b>	Liquid in PBS containing 50% glycerol, 0.5% BSA and 0.02% sodium azide.
<b>Source :</b>	Polyclonal, Rabbit,IgG
<b>Dilution :</b>	WB 1:500-2000;IHC 1:50-300
<b>Purification :</b>	The antibody was affinity-purified from rabbit antiserum by affinity-chromatography using epitope-specific immunogen.
<b>Concentration :</b>	1 mg/ml
<b>Storage Stability :</b>	-15°C to -25°C/1 year(Do not lower than -25°C)
<b>Observed Band :</b>	145kD

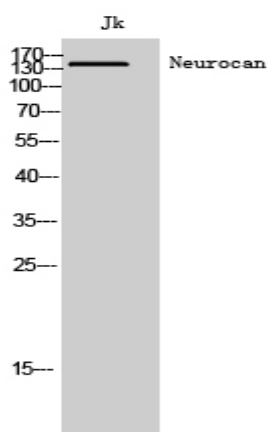
**Background :** Neurocan is a chondroitin sulfate proteoglycan thought to be involved in the modulation of cell adhesion and migration.[supplied by OMIM, Jul 2002],

**Function :** function:May modulate neuronal adhesion and neurite growth during development by binding to neural cell adhesion molecules (NG-CAM and N-CAM). Chondroitin sulfate proteoglycan; binds to hyaluronic acid.,online information:Neurocan,similarity:Belongs to the aggrecan/versican proteoglycan family.,similarity:Contains 1 C-type lectin domain.,similarity:Contains 1 Ig-like V-type (immunoglobulin-like) domain.,similarity:Contains 1 Sushi (CCP/SCR) domain.,similarity:Contains 2 EGF-like domains.,similarity:Contains 2 Link domains.,tissue specificity:Brain.,

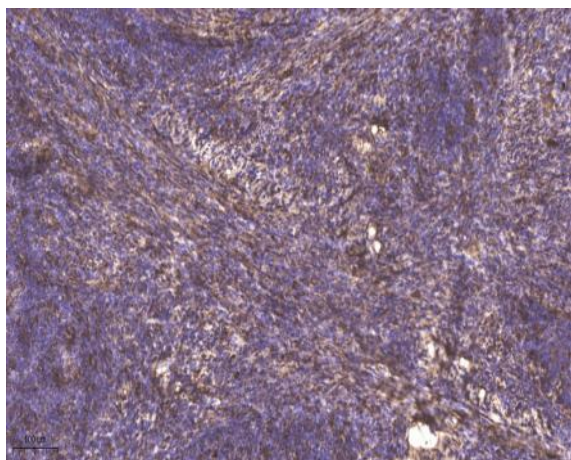
**Subcellular Location :** Secreted .

**Expression :** Brain.

## Products Images



Western Blot analysis of Jk cells using Neurocan Polyclonal Antibody



Immunohistochemical analysis of paraffin-embedded human cervical carcinoma. 1, Antibody was diluted at 1:200(4° overnight). 2, Tris-EDTA,pH9.0 was used for antigen retrieval. 3,Secondary antibody was diluted at 1:200(room temperature, 45min).