

Neuralized-2 Polyclonal Antibody

| | |
|------------------------------|---|
| Catalog No : | YT3053 |
| Reactivity : | Human;Mouse |
| Applications : | WB;IHC;IF;ELISA |
| Target : | Neuralized-2 |
| Gene Name : | NEURL2 |
| Protein Name : | Neuralized-like protein 2 |
| Human Gene Id : | 140825 |
| Human Swiss Prot No : | Q9BR09 |
| Mouse Swiss Prot No : | Q9D0S4 |
| Immunogen : | The antiserum was produced against synthesized peptide derived from human NEURL2. AA range:99-148 |
| Specificity : | Neuralized-2 Polyclonal Antibody detects endogenous levels of Neuralized-2 protein. |
| Formulation : | Liquid in PBS containing 50% glycerol, 0.5% BSA and 0.02% sodium azide. |
| Source : | Polyclonal, Rabbit,IgG |
| Dilution : | WB 1:500 - 1:2000. IHC 1:100 - 1:300. ELISA: 1:40000.. IF 1:50-200 |
| Purification : | The antibody was affinity-purified from rabbit antiserum by affinity-chromatography using epitope-specific immunogen. |
| Concentration : | 1 mg/ml |
| Storage Stability : | -15°C to -25°C/1 year(Do not lower than -25°C) |
| Observed Band : | 36kD |

Background :

This gene encodes a protein that is involved in the regulation of myofibril organization. This protein is likely the adaptor component of the E3 ubiquitin ligase complex in striated muscle, and it regulates the ubiquitin-mediated degradation of beta-catenin during myogenesis. Alternative splicing of this gene results in multiple transcript variants. [provided by RefSeq, Jun 2013],

Function :

domain:The SOCS domain mediates the interaction with TCEB1 and TCEB2, while the NHR domain may be involved in ubiquitination substrate binding.,function:Plays an important role in the process of myofiber differentiation and maturation. Probable substrate-recognition component of a SCF-like ECS (Elongin BC-CUL2/5-SOCS-box protein) E3 ubiquitin-protein ligase complex, which mediates the ubiquitination of proteins. Probably contributes to catalysis through recognition and positioning of the substrate and the ubiquitin-conjugating enzyme. During myogenesis, controls the ubiquitination and degradation of the specific pool of CTNNB1/beta-catenin located at the sarcolemma.,pathway:Protein modification; protein ubiquitination.,similarity:Contains 1 NHR (neuralized homology repeat) domain.,similarity:Contains 1 SOCS box domain.,subunit:Probable component the ECS(NEURL2) E3 ubiquitin-protein ligas

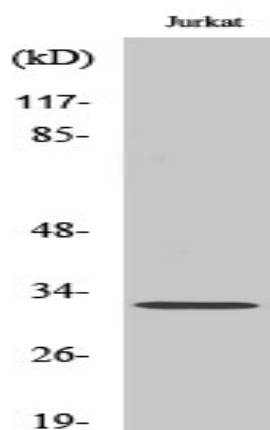
Subcellular Location :

Cytoplasm .

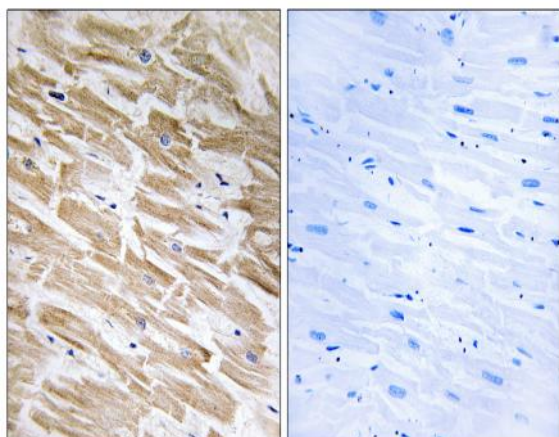
Expression :

Expressed specifically in skeletal and cardiac muscles.

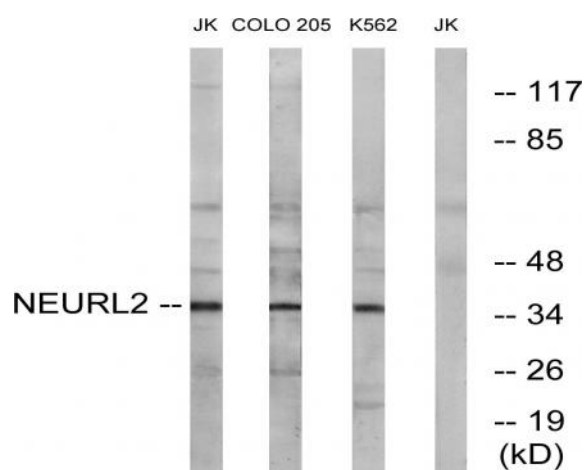
Products Images



Western Blot analysis of various cells using Neuralized-2 Polyclonal Antibody



Immunohistochemistry analysis of paraffin-embedded human heart tissue, using NEURL2 Antibody. The picture on the right is blocked with the synthesized peptide.



Western blot analysis of lysates from Jurkat, COLO, and K562 cells, using NEURL2 Antibody. The lane on the right is blocked with the synthesized peptide.