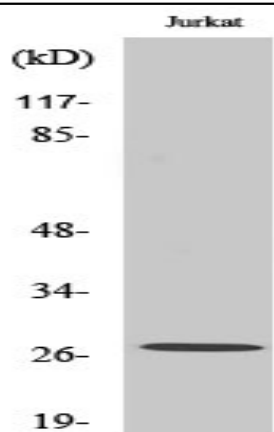


NDUFV2 Polyclonal Antibody

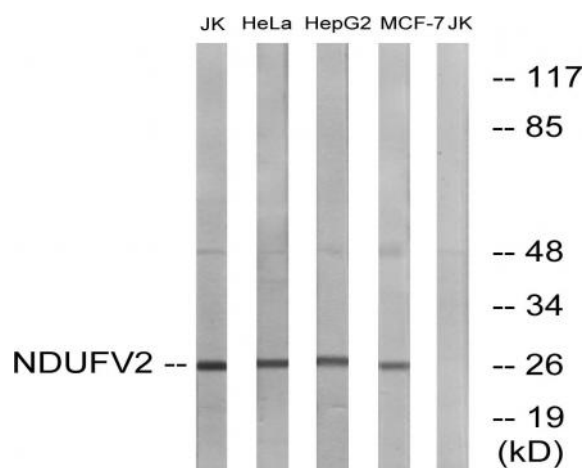
Catalog No :	YT3022
Reactivity :	Human;Mouse;Rat
Applications :	WB;IHC;IF;ELISA
Target :	NDUFV2
Fields :	>>Oxidative phosphorylation;>>Metabolic pathways;>>Thermogenesis;>>Retrograde endocannabinoid signaling;>>Non-alcoholic fatty liver disease;>>Alzheimer disease;>>Parkinson disease;>>Amyotrophic lateral sclerosis;>>Huntington disease;>>Prion disease;>>Pathways of neurodegeneration - multiple diseases;>>Chemical carcinogenesis - reactive oxygen species;>>Diabetic cardiomyopathy
Gene Name :	NDUFV2
Protein Name :	NADH dehydrogenase [ubiquinone] flavoprotein 2 mitochondrial
Human Gene Id :	4729
Human Swiss Prot No :	P19404
Mouse Gene Id :	72900
Mouse Swiss Prot No :	Q9D6J6
Rat Gene Id :	81728
Rat Swiss Prot No :	P19234
Immunogen :	The antiserum was produced against synthesized peptide derived from human NDUFV2. AA range:20-69
Specificity :	NDUFV2 Polyclonal Antibody detects endogenous levels of NDUFV2 protein.
Formulation :	Liquid in PBS containing 50% glycerol, 0.5% BSA and 0.02% sodium azide.

Source :	Polyclonal, Rabbit,IgG
Dilution :	WB 1:500 - 1:2000. IHC 1:100 - 1:300. ELISA: 1:40000.. IF 1:50-200
Purification :	The antibody was affinity-purified from rabbit antiserum by affinity-chromatography using epitope-specific immunogen.
Concentration :	1 mg/ml
Storage Stability :	-15°C to -25°C/1 year(Do not lower than -25°C)
Observed Band :	27kD
Cell Pathway :	Oxidative phosphorylation;Alzheimer's disease;Parkinson's disease;Huntington's disease;
Background :	The NADH-ubiquinone oxidoreductase complex (complex I) of the mitochondrial respiratory chain catalyzes the transfer of electrons from NADH to ubiquinone, and consists of at least 43 subunits. The complex is located in the inner mitochondrial membrane. This gene encodes the 24 kDa subunit of complex I, and is involved in electron transfer. Mutations in this gene are implicated in Parkinson's disease, bipolar disorder, schizophrenia, and have been found in one case of early onset hypertrophic cardiomyopathy and encephalopathy. A non-transcribed pseudogene of this locus is found on chromosome 19. [provided by RefSeq, Oct 2009],
Function :	catalytic activity:NADH + acceptor = NAD(+) + reduced acceptor.,catalytic activity:NADH + ubiquinone = NAD(+) + ubiquinol.,cofactor: Binds 1 2Fe-2S cluster .,function:Core subunit of the mitochondrial membrane respiratory chain NADH dehydrogenase (Complex I) that is believed to belong to the minimal assembly required for catalysis. Complex I functions in the transfer of electrons from NADH to the respiratory chain. The immediate electron acceptor for the enzyme is believed to be ubiquinone.,similarity:Belongs to the complex I 24 kDa subunit family.,subunit:Complex I is composed of 45 different subunits. This is a component of the flavoprotein-sulfur (FP) fragment of the enzyme.,
Subcellular Location :	Mitochondrion inner membrane ; Peripheral membrane protein ; Matrix side .
Expression :	Bone,Lung,

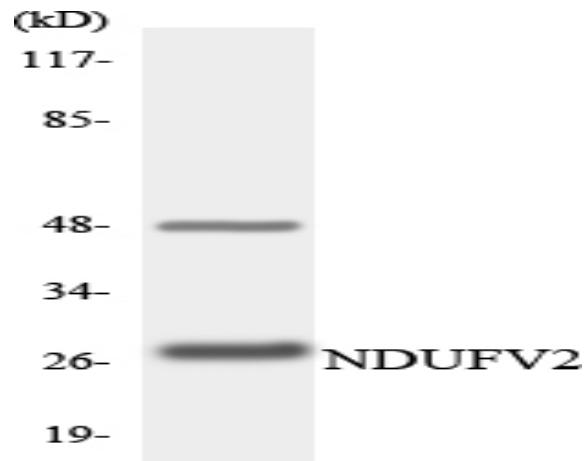
Products Images



Western Blot analysis of various cells using NDUFV2 Polyclonal Antibody



Western blot analysis of lysates from Jurkat, HeLa, HepG2, and MCF-7 cells, using NDUFV2 Antibody. The lane on the right is blocked with the synthesized peptide.



Western blot analysis of the lysates from K562 cells using NDUFV2 antibody.