

**Olfactory receptor 11H1/11H2/11H12 Polyclonal Antibody**

<b>Catalog No :</b>	YT3270
<b>Reactivity :</b>	Human;Rat;Mouse;
<b>Applications :</b>	WB;IF;ELISA
<b>Target :</b>	Olfactory receptor 11H1/11H2/11H12
<b>Fields :</b>	>>Olfactory transduction
<b>Gene Name :</b>	OR11H12
<b>Protein Name :</b>	Olfactory receptor 11H12
<b>Human Gene Id :</b>	81061/440153
<b>Human Swiss Prot No :</b>	Q8NG94/Q8NH07/B2RN74/Q6IEX0
<b>Immunogen :</b>	The antiserum was produced against synthesized peptide derived from human OR11H1/11H2/11H12. AA range:277-326
<b>Specificity :</b>	Olfactory receptor 11H1/11H2/11H12 Polyclonal Antibody detects endogenous levels of Olfactory receptor 11H1/11H2/11H12 protein.
<b>Formulation :</b>	Liquid in PBS containing 50% glycerol, 0.5% BSA and 0.02% sodium azide.
<b>Source :</b>	Polyclonal, Rabbit,IgG
<b>Dilution :</b>	WB 1:500 - 1:2000. IF 1:200 - 1:1000. ELISA: 1:20000. Not yet tested in other applications.
<b>Purification :</b>	The antibody was affinity-purified from rabbit antiserum by affinity-chromatography using epitope-specific immunogen.
<b>Concentration :</b>	1 mg/ml
<b>Storage Stability :</b>	-15°C to -25°C/1 year(Do not lower than -25°C)

**Observed Band :** 35kD

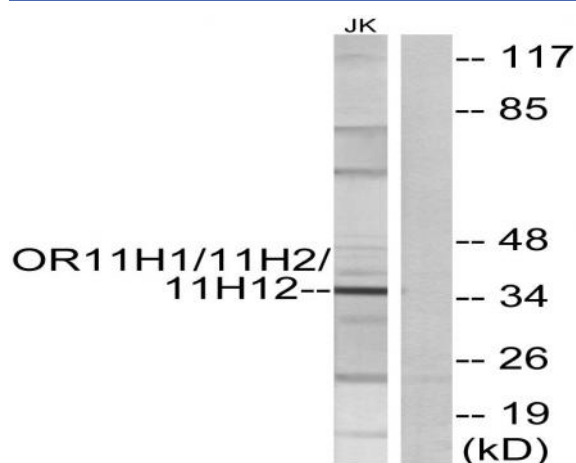
**Cell Pathway :** Olfactory transduction;

**Background :** Olfactory receptors interact with odorant molecules in the nose, to initiate a neuronal response that triggers the perception of a smell. The olfactory receptor proteins are members of a large family of G-protein-coupled receptors (GPCR) arising from single coding-exon genes. Olfactory receptors share a 7-transmembrane domain structure with many neurotransmitter and hormone receptors and are responsible for the recognition and G protein-mediated transduction of odorant signals. The olfactory receptor gene family is the largest in the genome. The nomenclature assigned to the olfactory receptor genes and proteins for this organism is independent of other organisms. [provided by RefSeq, Jul 2008],

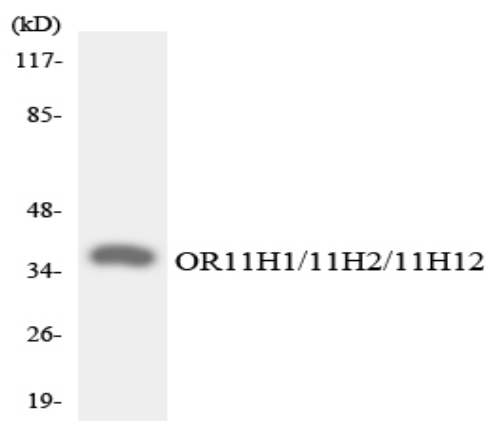
**Function :** caution:It is uncertain whether Met-1 or Met-12 is the initiator.,function:Odorant receptor .,similarity:Belongs to the G-protein coupled receptor 1 family.,

**Subcellular Location :** Cell membrane; Multi-pass membrane protein.

## Products Images



Western blot analysis of lysates from Jurkat cells, using OR11H1/11H2/11H12 Antibody. The lane on the right is blocked with the synthesized peptide.



Western blot analysis of the lysates from HeLa cells using OR11H1/11H2/11H12 antibody.