

Ndfip1 Polyclonal Antibody

Catalog No :	YT3002
Reactivity :	Human;Mouse;Rat
Applications :	WB;ELISA
Target :	Ndfip1
Gene Name :	NDFIP1
Protein Name :	NEDD4 family-interacting protein 1
Human Gene Id :	80762
Human Swiss Prot No :	Q9BT67
Mouse Gene Id :	65113
Mouse Swiss Prot No :	Q8R0W6
Rat Gene Id :	291609
Rat Swiss Prot No :	Q5U2S1
Immunogen :	Synthesized peptide derived from Ndfip1 . at AA range: 150-230
Specificity :	Ndfip1 Polyclonal Antibody detects endogenous levels of Ndfip1 protein.
Formulation :	Liquid in PBS containing 50% glycerol, 0.5% BSA and 0.02% sodium azide.
Source :	Polyclonal, Rabbit,IgG
Dilution :	WB 1:500 - 1:2000. ELISA: 1:40000. Not yet tested in other applications.
Purification :	The antibody was affinity-purified from rabbit antiserum by affinity-chromatography using epitope-specific immunogen.

Concentration : 1 mg/ml

Storage Stability : -15°C to -25°C/1 year(Do not lower than -25°C)

Observed Band : 25kD

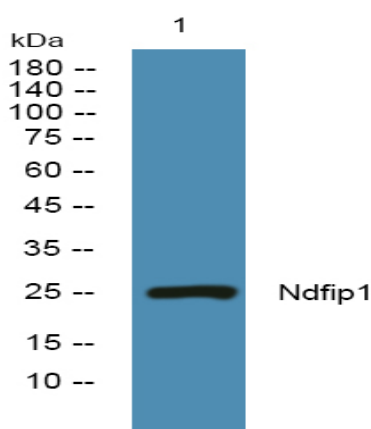
Background : The protein encoded by this gene belongs to a small group of evolutionarily conserved proteins with three transmembrane domains. It is a potential target for ubiquitination by the Nedd4 family of proteins. This protein is thought to be part of a family of integral Golgi membrane proteins. [provided by RefSeq, Jul 2008],

Function : developmental stage:Expressed in fetal brain, kidney and lung.,domain:The WW-binding motifs mediate interaction with NEDD4.,function:May play a role in Golgi structure maintenance.,PTM:Ubiquitinated by NEDD4; mono-, di- and polyubiquitinated forms are detected. Ubiquitination regulates its degradation.,subunit:Interacts with NEDD4. Interacts in vitro with NEDD4L, SR140, WWP2 and ITCH.,tissue specificity:Widely expressed. Higher levels are detected in cerebellum, pituitary, thalamus, kidney, liver, testis, salivary glands and placenta.,

Subcellular Location : Endosome membrane ; Multi-pass membrane protein . Golgi apparatus membrane . Cell junction, synapse, synaptosome . Cell projection, dendrite . Secreted . Detected in exosomes and secreted via the exosomal pathway (PubMed:18819914).

Expression : Widely expressed. Higher levels are detected in cerebellum, pituitary, thalamus, kidney, liver, testis, salivary glands and placenta. Also expressed in fetal brain, kidney and lung.

Products Images



Western blot analysis of lysates from Jurkat cells, primary antibody was diluted at 1:1000, 4° over night