

Olfactory receptor 10J1 Polyclonal Antibody

Catalog No :	YT3258
Reactivity :	Human;Rat;Mouse;
Applications :	WB;IF;ELISA
Target :	Olfactory receptor 10J1
Fields :	>>Olfactory transduction
Gene Name :	OR10J1
Protein Name :	Olfactory receptor 10J1
Human Gene Id :	26476
Human Swiss Prot No :	P30954/Q2M1M8/Q5VSV1
Immunogen :	The antiserum was produced against synthesized peptide derived from human OR10J1. AA range:241-290
Specificity :	Olfactory receptor 10J1 Polyclonal Antibody detects endogenous levels of Olfactory receptor 10J1 protein.
Formulation :	Liquid in PBS containing 50% glycerol, 0.5% BSA and 0.02% sodium azide.
Source :	Polyclonal, Rabbit,IgG
Dilution :	WB 1:500 - 1:2000. IF 1:200 - 1:1000. ELISA: 1:10000. Not yet tested in other applications.
Purification :	The antibody was affinity-purified from rabbit antiserum by affinity-chromatography using epitope-specific immunogen.
Concentration :	1 mg/ml
Storage Stability :	-15°C to -25°C/1 year(Do not lower than -25°C)

Observed Band : 30kD

Cell Pathway : Olfactory transduction;

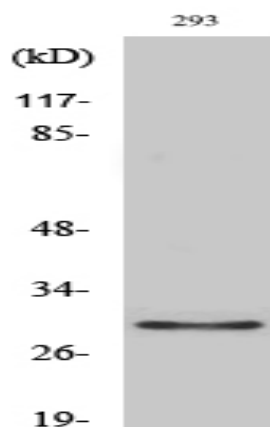
Background : Olfactory receptors interact with odorant molecules in the nose, to initiate a neuronal response that triggers the perception of a smell. The olfactory receptor proteins are members of a large family of G-protein-coupled receptors (GPCR) arising from single coding-exon genes. Olfactory receptors share a 7-transmembrane domain structure with many neurotransmitter and hormone receptors and are responsible for the recognition and G protein-mediated transduction of odorant signals. The olfactory receptor gene family is the largest in the genome. The nomenclature assigned to the olfactory receptor genes and proteins for this organism is independent of other organisms. [provided by RefSeq, Jul 2008],

Function : function:Odorant receptor .,similarity:Belongs to the G-protein coupled receptor 1 family.,

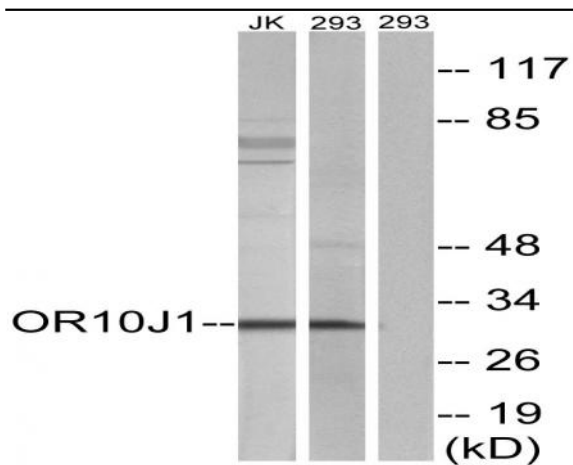
Subcellular Location : Cell membrane; Multi-pass membrane protein.

Expression : Cerebellum, Testis,

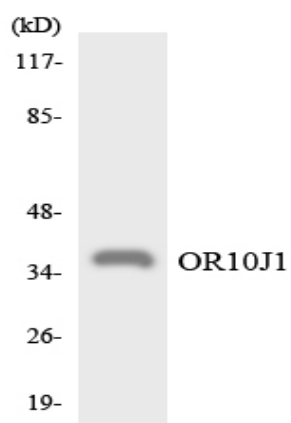
Products Images



Western Blot analysis of various cells using Olfactory receptor 10J1 Polyclonal Antibody



Western blot analysis of lysates from 293 and Jurkat cells, using OR10J1 Antibody. The lane on the right is blocked with the synthesized peptide.



Western blot analysis of the lysates from RAW264.7 cells using OR10J1 antibody.