

Olfactory receptor 10A5 Polyclonal Antibody

Catalog No :	YT3242
Reactivity :	Human;Rat;Mouse;
Applications :	IF;ELISA
Target :	Olfactory receptor 10A5
Fields :	>>Olfactory transduction
Gene Name :	OR10A5
Protein Name :	Olfactory receptor 10A5
Human Gene Id :	144124
Human Swiss Prot No :	Q9H207
Immunogen :	The antiserum was produced against synthesized peptide derived from human OR10A5. AA range:200-249
Specificity :	Olfactory receptor 10A5 Polyclonal Antibody detects endogenous levels of Olfactory receptor 10A5 protein.
Formulation :	Liquid in PBS containing 50% glycerol, 0.5% BSA and 0.02% sodium azide.
Source :	Polyclonal, Rabbit,IgG
Dilution :	IF 1:200 - 1:1000. ELISA: 1:20000. Not yet tested in other applications.
Purification :	The antibody was affinity-purified from rabbit antiserum by affinity-chromatography using epitope-specific immunogen.
Concentration :	1 mg/ml
Storage Stability :	-15°C to -25°C/1 year(Do not lower than -25°C)
Molecularweight :	25kD

Cell Pathway : Olfactory transduction;

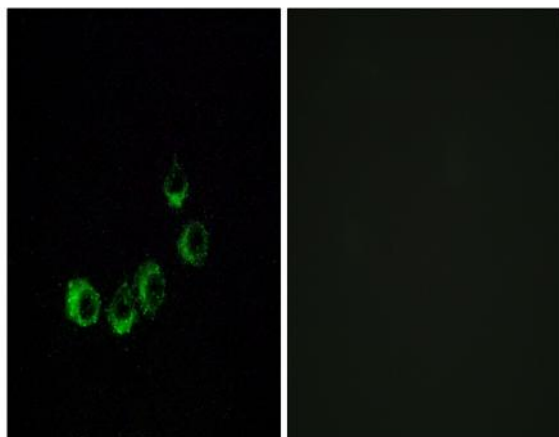
Background : Olfactory receptors interact with odorant molecules in the nose, to initiate a neuronal response that triggers the perception of a smell. The olfactory receptor proteins are members of a large family of G-protein-coupled receptors (GPCR) arising from single coding-exon genes. Olfactory receptors share a 7-transmembrane domain structure with many neurotransmitter and hormone receptors and are responsible for the recognition and G protein-mediated transduction of odorant signals. The olfactory receptor gene family is the largest in the genome. The nomenclature assigned to the olfactory receptor genes and proteins for this organism is independent of other organisms. [provided by RefSeq, Jul 2008],

Function : function:Odorant receptor (Potential). May be involved in taste perception.,similarity:Belongs to the G-protein coupled receptor 1 family.,tissue specificity:Expressed in the tongue.,

Subcellular Location : Cell membrane; Multi-pass membrane protein.

Expression : Expressed in the tongue.

Products Images



Immunofluorescence analysis of MCF7 cells, using OR10A5 Antibody. The picture on the right is blocked with the synthesized peptide.