

Olfactory receptor 10A4 Polyclonal Antibody

Catalog No :	YT3241
Reactivity :	Human;Rat;Mouse;
Applications :	WB;IF;ELISA
Target :	Olfactory receptor 10A4
Fields :	>>Olfactory transduction
Gene Name :	OR10A4
Protein Name :	Olfactory receptor 10A4
Human Gene Id :	283297
Human Swiss Prot No :	Q9H209
Immunogen :	The antiserum was produced against synthesized peptide derived from human OR10A4. AA range:261-310
Specificity :	Olfactory receptor 10A4 Polyclonal Antibody detects endogenous levels of Olfactory receptor 10A4 protein.
Formulation :	Liquid in PBS containing 50% glycerol, 0.5% BSA and 0.02% sodium azide.
Source :	Polyclonal, Rabbit,IgG
Dilution :	WB 1:500 - 1:2000. IF 1:200 - 1:1000. ELISA: 1:40000. Not yet tested in other applications.
Purification :	The antibody was affinity-purified from rabbit antiserum by affinity-chromatography using epitope-specific immunogen.
Concentration :	1 mg/ml
Storage Stability :	-15°C to -25°C/1 year(Do not lower than -25°C)

Observed Band : 38kD

Cell Pathway : Olfactory transduction;

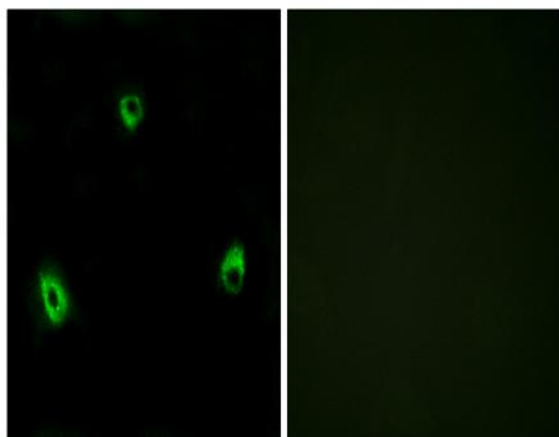
Background : Olfactory receptors interact with odorant molecules in the nose, to initiate a neuronal response that triggers the perception of a smell. The olfactory receptor proteins are members of a large family of G-protein-coupled receptors (GPCR) arising from single coding-exon genes. Olfactory receptors share a 7-transmembrane domain structure with many neurotransmitter and hormone receptors and are responsible for the recognition and G protein-mediated transduction of odorant signals. The olfactory receptor gene family is the largest in the genome. The nomenclature assigned to the olfactory receptor genes and proteins for this organism is independent of other organisms. [provided by RefSeq, Jul 2008],

Function : function:Odorant receptor (Potential). May be involved in taste perception.,miscellaneous:The sequence shown here is derived from an EMBL/GenBank/DDBJ third party annotation (TPA) entry.,similarity:Belongs to the G-protein coupled receptor 1 family.,tissue specificity:Expressed in the tongue.,

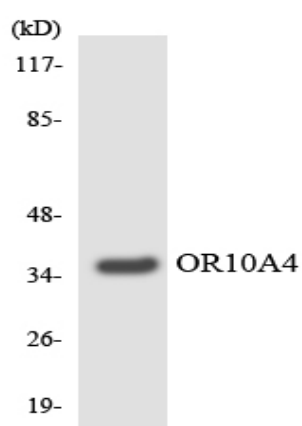
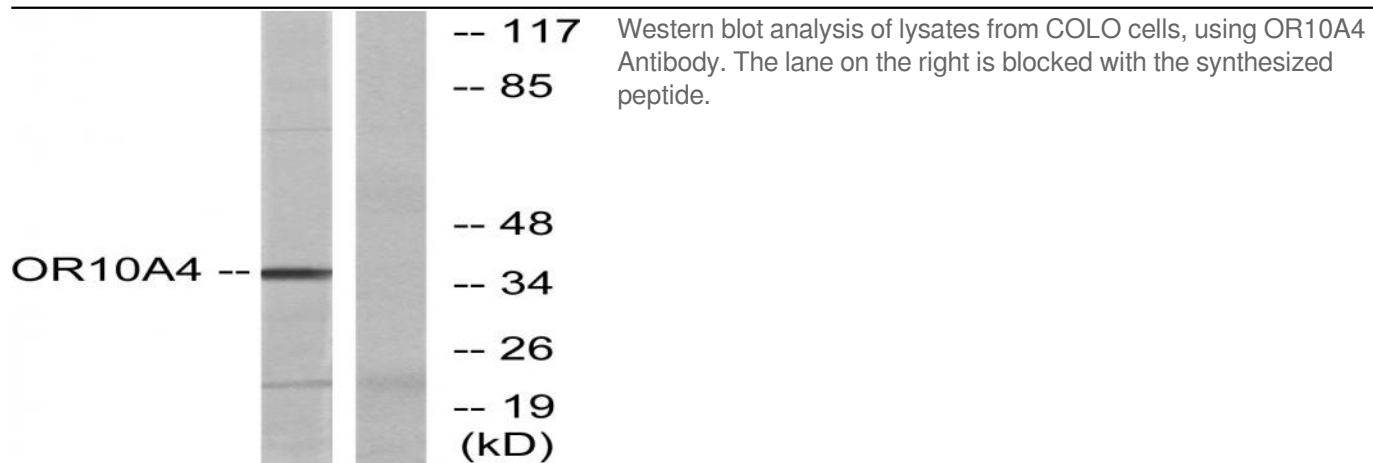
Subcellular Location : Cell membrane; Multi-pass membrane protein.

Expression : Expressed in the tongue.

Products Images



Immunofluorescence analysis of MCF7 cells, using OR10A4 Antibody. The picture on the right is blocked with the synthesized peptide.



Western blot analysis of the lysates from HUVEC cells using OR10A4 antibody.