

OGFR Polyclonal Antibody

Catalog No :	YT3240
Reactivity :	Human
Applications :	WB;ELISA
Target :	OGFR
Gene Name :	OGFR
Protein Name :	Opioid growth factor receptor
Human Gene Id :	11054
Human Swiss Prot No :	Q9NZT2
Mouse Swiss Prot No :	Q99PG2
Immunogen :	The antiserum was produced against synthesized peptide derived from human OGFR. AA range:138-187
Specificity :	OGFR Polyclonal Antibody detects endogenous levels of OGFR protein.
Formulation :	Liquid in PBS containing 50% glycerol, 0.5% BSA and 0.02% sodium azide.
Source :	Polyclonal, Rabbit,IgG
Dilution :	WB 1:500 - 1:2000. ELISA: 1:20000. Not yet tested in other applications.
Purification :	The antibody was affinity-purified from rabbit antiserum by affinity-chromatography using epitope-specific immunogen.
Concentration :	1 mg/ml
Storage Stability :	-15°C to -25°C/1 year(Do not lower than -25°C)
Observed Band :	90kD

Background :

The protein encoded by this gene is a receptor for opioid growth factor (OGF), also known as [Met(5)]-enkephalin. OGF is a negative regulator of cell proliferation and tissue organization in a variety of processes. The encoded unbound receptor for OGF has been localized to the outer nuclear envelope, where it binds OGF and is translocated into the nucleus. The coding sequence of this gene contains a polymorphic region of 60 nt tandem imperfect repeat units. Several transcripts containing between zero and eight repeat units have been reported. [provided by RefSeq, Jul 2008],

Function :

function:Receptor for opioid growth factor (OGF), also known as Met-enkephalin. Seems to be involved in growth regulation.,online information:OGFr entry,PTM:Phosphorylated upon DNA damage, probably by ATM or ATR.,similarity:Belongs to the opioid growth factor receptor family.,subcellular location:The OGF/OGFR complex is probably translocated to the nucleus.,tissue specificity:Highly expressed in the heart and liver, moderately in skeletal muscle and kidney and to a lesser extent in brain and pancreas. Expressed in fetal tissues including liver and kidney.,

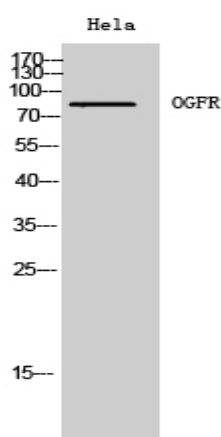
Subcellular Location :

Cytoplasm . Nucleus . The OGF/OGFR complex is probably translocated to the nucleus.

Expression :

Highly expressed in the heart and liver, moderately in skeletal muscle and kidney and to a lesser extent in brain and pancreas. Expressed in fetal tissues including liver and kidney.

Products Images



Western Blot analysis of HeLa cells using OGFR Polyclonal Antibody