

N4BP1 Polyclonal Antibody

Catalog No :	YT2962
Reactivity :	Human;Mouse
Applications :	WB;IHC;IF;ELISA
Target :	N4BP1
Gene Name :	N4BP1
Protein Name :	NEDD4-binding protein 1
Human Gene Id :	9683
Human Swiss Prot No :	O75113
Mouse Swiss Prot No :	Q6A037
Immunogen :	The antiserum was produced against synthesized peptide derived from human N4BP1. AA range:383-432
Specificity :	N4BP1 Polyclonal Antibody detects endogenous levels of N4BP1 protein.
Formulation :	Liquid in PBS containing 50% glycerol, 0.5% BSA and 0.02% sodium azide.
Source :	Polyclonal, Rabbit,IgG
Dilution :	WB 1:500 - 1:2000. IHC 1:100 - 1:300. ELISA: 1:40000.. IF 1:50-200
Purification :	The antibody was affinity-purified from rabbit antiserum by affinity-chromatography using epitope-specific immunogen.
Concentration :	1 mg/ml
Storage Stability :	-15°C to -25°C/1 year(Do not lower than -25°C)
Observed Band :	100kD

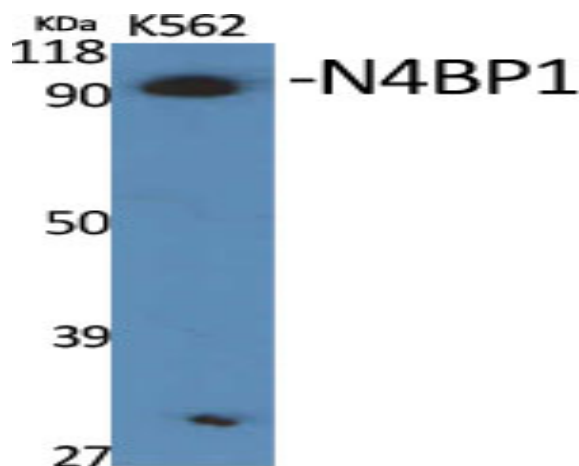
Background : PTM:Monoubiquitinated.,PTM:Phosphorylated upon DNA damage, probably by ATM or ATR.,similarity:Belongs to the N4BP1 family.,subcellular location:In discrete circular structures.,subunit:Binds NEDD4.,tissue specificity:Detected in heart, lung, brain, liver, skeletal muscle, pancreas, kidney, spleen, testis and ovary.,

Function : PTM:Monoubiquitinated.,PTM:Phosphorylated upon DNA damage, probably by ATM or ATR.,similarity:Belongs to the N4BP1 family.,subcellular location:In discrete circular structures.,subunit:Binds NEDD4.,tissue specificity:Detected in heart, lung, brain, liver, skeletal muscle, pancreas, kidney, spleen, testis and ovary.,

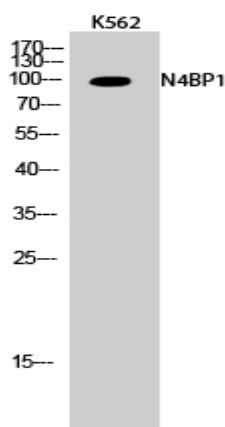
Subcellular Location : Cytoplasm, cytosol . Nucleus . Nucleus, nucleolus . Nucleus, PML body . Primarily localizes to the nucleolus. Also localizes to the PML nuclear bodies, when desumoylated. .

Expression : Detected in heart, lung, brain, liver, skeletal muscle, pancreas, kidney, spleen, testis and ovary.

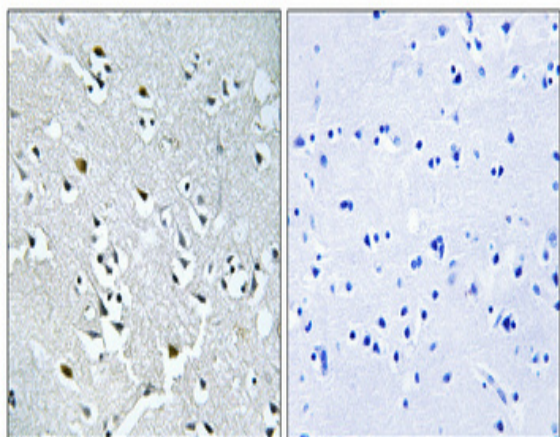
Products Images



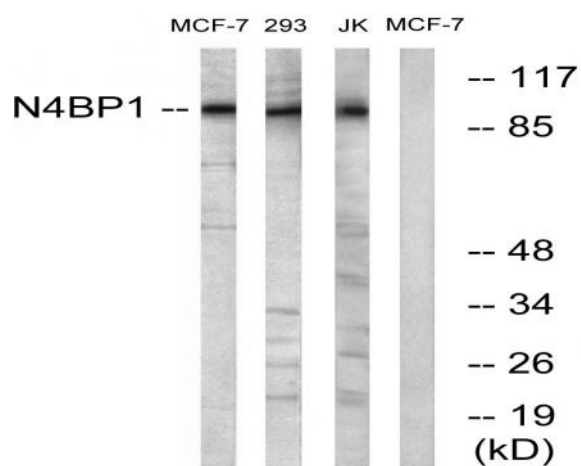
Western Blot analysis of various cells using N4BP1 Polyclonal Antibody cells nucleus extracted by Minute TM Cytoplasmic and Nuclear Fractionation kit (SC-003, Inventbiotech, MN, USA).



Western Blot analysis of K562 cells using N4BP1 Polyclonal Antibody cells nucleus extracted by Minute TM Cytoplasmic and Nuclear Fractionation kit (SC-003, Inventbiotech, MN, USA).



Immunohistochemical analysis of paraffin-embedded Human brain. Antibody was diluted at 1:100(4° overnight). High-pressure and temperature Tris-EDTA,pH8.0 was used for antigen retrieval. Negative contrl (right) obtaned from antibody was pre-absorbed by immunogen peptide.



Western blot analysis of lysates from MCF-7 and Jurkat/293 cells, using N4BP1 Antibody. The lane on the right is blocked with the synthesized peptide.