

## OATP-C Polyclonal Antibody

<b>Catalog No :</b>	YT3222
<b>Reactivity :</b>	Human
<b>Applications :</b>	WB;ELISA
<b>Target :</b>	OATP-C
<b>Fields :</b>	>>Bile secretion
<b>Gene Name :</b>	SLCO1B1
<b>Protein Name :</b>	Solute carrier organic anion transporter family member 1B1
<b>Human Gene Id :</b>	10599
<b>Human Swiss Prot No :</b>	Q9Y6L6
<b>Immunogen :</b>	The antiserum was produced against synthesized peptide derived from human SLCO1B1. AA range:251-300
<b>Specificity :</b>	OATP-C Polyclonal Antibody detects endogenous levels of OATP-C protein.
<b>Formulation :</b>	Liquid in PBS containing 50% glycerol, 0.5% BSA and 0.02% sodium azide.
<b>Source :</b>	Polyclonal, Rabbit,IgG
<b>Dilution :</b>	WB 1:500 - 1:2000. ELISA: 1:40000. Not yet tested in other applications.
<b>Purification :</b>	The antibody was affinity-purified from rabbit antiserum by affinity-chromatography using epitope-specific immunogen.
<b>Concentration :</b>	1 mg/ml
<b>Storage Stability :</b>	-15°C to -25°C/1 year(Do not lower than -25°C)
<b>Observed Band :</b>	76kD

**Background :**

This gene encodes a liver-specific member of the organic anion transporter family. The encoded protein is a transmembrane receptor that mediates the sodium-independent uptake of numerous endogenous compounds including bilirubin, 17-beta-glucuronosyl estradiol and leukotriene C4. This protein is also involved in the removal of drug compounds such as statins, bromosulphophthalein and rifampin from the blood into the hepatocytes. Polymorphisms in the gene encoding this protein are associated with impaired transporter function. [provided by RefSeq, Mar 2009],

**Function :**

function:Mediates the Na(+)-independent transport of organic anions such as pravastatin, taurocholate, methotrexate, dehydroepiandrosterone sulfate, 17-beta-glucuronosyl estradiol, estrone sulfate, prostaglandin E2, thromboxane B2, leukotriene C3, leukotriene E4, thyroxine and triiodothyronine. May play an important role in the clearance of bile acids and organic anions from the liver.,similarity:Belongs to the organo anion transporter (TC 2.A.60) family.,subcellular location:Detected in basolateral membranes of hepatocytes.,tissue specificity:Highly expressed in liver. Not detected in heart, brain, placenta, lung, skeletal muscle, kidney, pancreas, spleen, thymus, prostate, testis, ovary, small intestine, colon and leukocyte.,

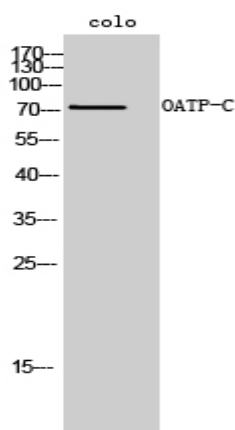
**Subcellular Location :**

Basolateral cell membrane ; Multi-pass membrane protein . Detected in basolateral membranes of hepatocytes.

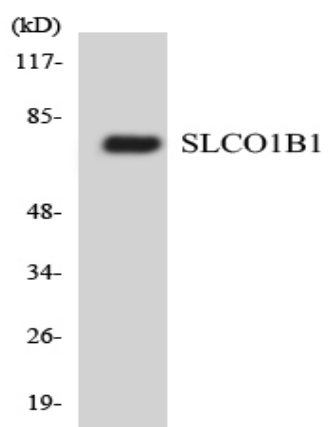
**Expression :**

Highly expressed in liver, at the basolateral membranes of centrilobular hepatocytes. Not detected in heart, brain, placenta, lung, skeletal muscle, kidney, pancreas, spleen, thymus, prostate, testis, ovary, small intestine, colon and leukocyte.

## Products Images



Western Blot analysis of colo cells using OATP-C Polyclonal Antibody



Western blot analysis of the lysates from HUVEC cells using SLCO1B1 antibody.