

## NSE2 Polyclonal Antibody

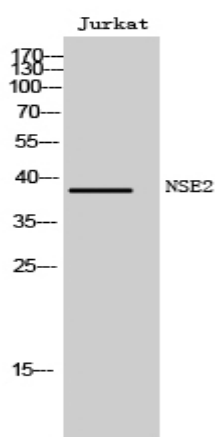
<b>Catalog No :</b>	YT3194
<b>Reactivity :</b>	Human;Rat;Mouse;
<b>Applications :</b>	WB;IHC;IF;ELISA
<b>Target :</b>	NSE2
<b>Gene Name :</b>	FAM84B
<b>Protein Name :</b>	Protein FAM84B
<b>Human Gene Id :</b>	157638
<b>Human Swiss Prot No :</b>	Q96KN1
<b>Immunogen :</b>	The antiserum was produced against synthesized peptide derived from human FAM84B. AA range:11-60
<b>Specificity :</b>	NSE2 Polyclonal Antibody detects endogenous levels of NSE2 protein.
<b>Formulation :</b>	Liquid in PBS containing 50% glycerol, 0.5% BSA and 0.02% sodium azide.
<b>Source :</b>	Polyclonal, Rabbit,IgG
<b>Dilution :</b>	WB 1:500 - 1:2000. IHC 1:100 - 1:300. ELISA: 1:10000.. IF 1:50-200
<b>Purification :</b>	The antibody was affinity-purified from rabbit antiserum by affinity-chromatography using epitope-specific immunogen.
<b>Concentration :</b>	1 mg/ml
<b>Storage Stability :</b>	-15°C to -25°C/1 year(Do not lower than -25°C)
<b>Observed Band :</b>	38kD
<b>Background :</b>	similarity:Belongs to the FAM84 family.,tissue specificity:Expressed in esophageal squamous cell carcinomas.,

**Function :** similarity:Belongs to the FAM84 family.,tissue specificity:Expressed in esophageal squamous cell carcinomas.,

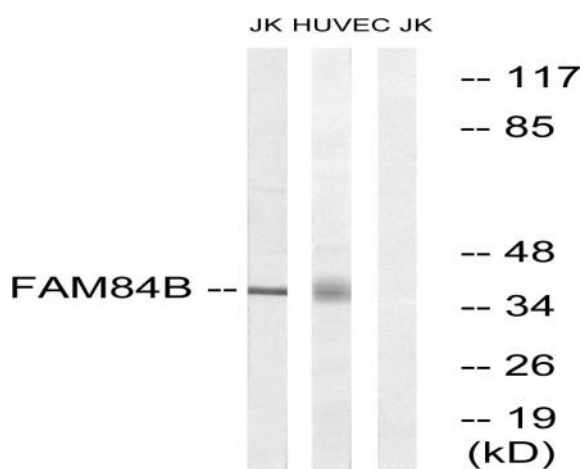
**Subcellular Location :** cytoplasm,plasma membrane,

**Expression :** Expressed in esophageal squamous cell carcinomas.

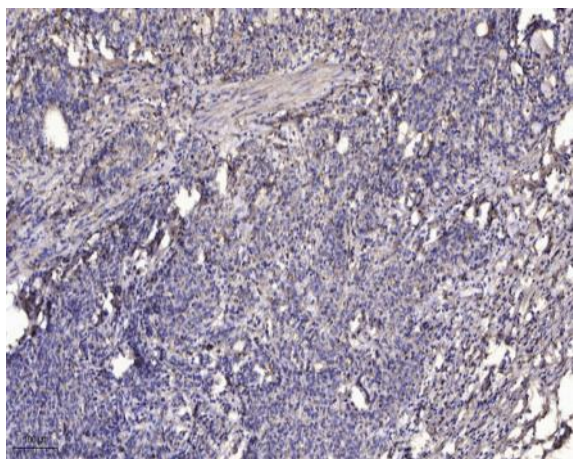
## Products Images



Western Blot analysis of Jurkat cells using NSE2 Polyclonal Antibody



Western blot analysis of lysates from Jurkat and HUVEC cells, using FAM84B Antibody. The lane on the right is blocked with the synthesized peptide.



Immunohistochemical analysis of paraffin-embedded human Gastric adenocarcinoma. 1, Antibody was diluted at 1:200(4° overnight). 2, Tris-EDTA,pH9.0 was used for antigen retrieval. 3,Secondary antibody was diluted at 1:200(room temperature, 45min).