

## MSK2 Polyclonal Antibody

<b>Catalog No :</b>	YT2903
<b>Reactivity :</b>	Human;Mouse
<b>Applications :</b>	WB;IHC;IF;ELISA
<b>Target :</b>	MSK2
<b>Fields :</b>	>>MAPK signaling pathway;>>TNF signaling pathway
<b>Gene Name :</b>	RPS6KA4
<b>Protein Name :</b>	Ribosomal protein S6 kinase alpha-4
<b>Human Gene Id :</b>	8986
<b>Human Swiss Prot No :</b>	O75676
<b>Mouse Gene Id :</b>	56613
<b>Mouse Swiss Prot No :</b>	Q9Z2B9
<b>Immunogen :</b>	The antiserum was produced against synthesized peptide derived from human MSK2. AA range:531-580
<b>Specificity :</b>	MSK2 Polyclonal Antibody detects endogenous levels of MSK2 protein.
<b>Formulation :</b>	Liquid in PBS containing 50% glycerol, 0.5% BSA and 0.02% sodium azide.
<b>Source :</b>	Polyclonal, Rabbit,IgG
<b>Dilution :</b>	WB 1:500 - 1:2000. IHC 1:100 - 1:300. ELISA: 1:5000.. IF 1:50-200
<b>Purification :</b>	The antibody was affinity-purified from rabbit antiserum by affinity-chromatography using epitope-specific immunogen.
<b>Concentration :</b>	1 mg/ml

**Storage Stability :** -15°C to -25°C/1 year(Do not lower than -25°C)

**Observed Band :** 86kD

**Cell Pathway :** Insulin Receptor; Regulates Angiogenesis;  
MAPK\_ERK\_Growth;MAPK\_G\_Protein; B Cell Receptor; AMPK

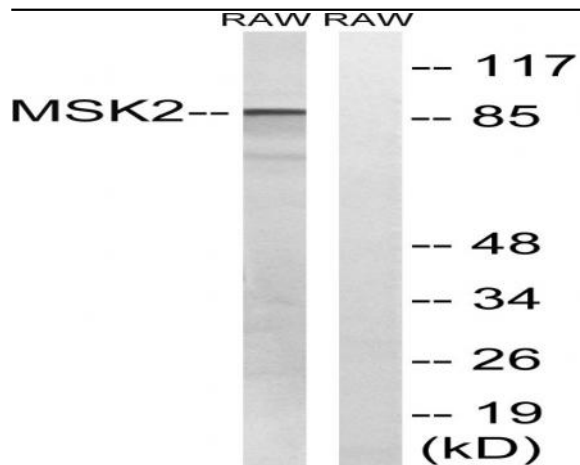
**Background :** ribosomal protein S6 kinase A4(RPS6KA4) Homo sapiens This gene encodes a member of the RSK (ribosomal S6 kinase) family of serine/threonine kinases. This kinase contains 2 non-identical kinase catalytic domains and phosphorylates various substrates, including CREB1 and ATF1. The encoded protein can also phosphorylate histone H3 to regulate certain inflammatory genes. Several transcript variants encoding different isoforms have been found for this gene. [provided by RefSeq, Jan 2016],

**Function :** catalytic activity:ATP + a protein = ADP + a phosphoprotein.,cofactor:Magnesium.,enzyme regulation:Appears to be activated by multiple phosphorylations on threonine and serine residues. ERK1/2 and p38 kinases may play a role in this process.,function:Serine/threonine kinase that may play a role in mediating the growth-factor and stress induced activation of the transcription factor CREB. Essential role in the control of RELA transcriptional activity in response to TNF. Phosphorylates 'Ser-10' of histone H3 in response to mitogenics, stress stimuli and epidermal growth-factor (EGF) and result in the transcriptional activation of several immediate early genes, including proto-oncogenes FOS and JUN (By similarity). Mediates the mitogen- and stress-induced phosphorylation of high mobility group protein 14 (HMG-14).,miscellaneous:Enzyme activity requires the presence of both kinase domains.,si

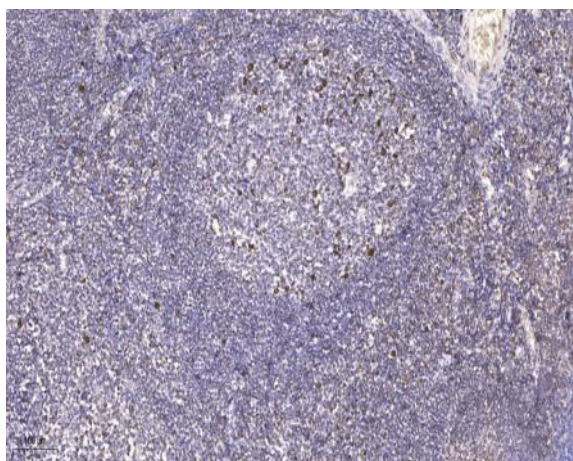
**Subcellular Location :** Nucleus .

**Expression :** Blood,Brain,Placenta,

## Products Images



Western blot analysis of lysates from Raw264.7 cells, treated with UV 5', using MSK2 Antibody. The lane on the right is blocked with the synthesized peptide.



Immunohistochemical analysis of paraffin-embedded human tonsil. 1, Antibody was diluted at 1:200(4° overnight). 2, Tris-EDTA,pH9.0 was used for antigen retrieval. 3,Secondary antibody was diluted at 1:200(room temperature, 45min).