

Nop132 Polyclonal Antibody

Catalog No :	YT3165
Reactivity :	Human;Rat;Mouse;
Applications :	WB;IHC;IF;ELISA
Target :	Nop132
Gene Name :	NOL8
Protein Name :	Nucleolar protein 8
Human Gene Id :	55035
Human Swiss Prot No :	Q76FK4
Mouse Swiss Prot No :	Q3UHX0
Immunogen :	The antiserum was produced against synthesized peptide derived from human NOL8. AA range:1118-1167
Specificity :	Nop132 Polyclonal Antibody detects endogenous levels of Nop132 protein.
Formulation :	Liquid in PBS containing 50% glycerol, 0.5% BSA and 0.02% sodium azide.
Source :	Polyclonal, Rabbit,IgG
Dilution :	WB 1:500 - 1:2000. IHC 1:100 - 1:300. ELISA: 1:20000.. IF 1:50-200
Purification :	The antibody was affinity-purified from rabbit antiserum by affinity-chromatography using epitope-specific immunogen.
Concentration :	1 mg/ml
Storage Stability :	-15°C to -25°C/1 year(Do not lower than -25°C)
Observed Band :	130kD

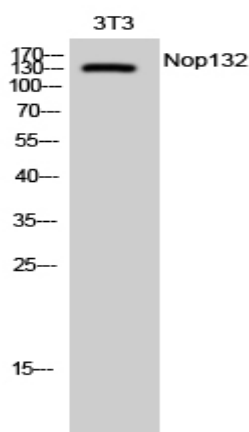
Background : NOL8 binds Ras-related GTP-binding proteins (see MIM 608267) and plays a role in cell growth (Sekiguchi et al., 2004 [PubMed 14660641]).[supplied by OMIM, Mar 2008],

Function : function:Plays an essential role in the survival of diffuse-type gastric cancer cells. May be involved in regulation of gene expression at the post-transcriptional level or in ribosome biogenesis in cancer cells.,induction:Up-regulated in diffuse-type gastric cancers.,PTM:Phosphorylated.,similarity:Contains 1 RRM (RNA recognition motif) domain.,subunit:Interacts with the GTP form of RRAGA, RRAGC and RRAGD. Interacts with NIP7.,tissue specificity:Expressed in various diffuse-type gastric cancers. Detected at lower levels in skeletal muscle.,

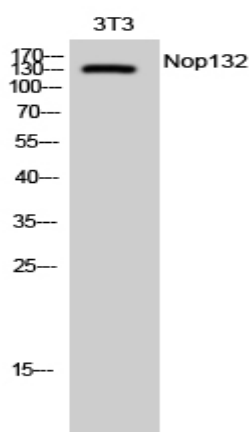
Subcellular Location : Nucleus, nucleolus . Localizes in the nucleolar-organizing region during ribosome biogenesis.

Expression : Expressed in various diffuse-type gastric cancers. Detected at lower levels in skeletal muscle.

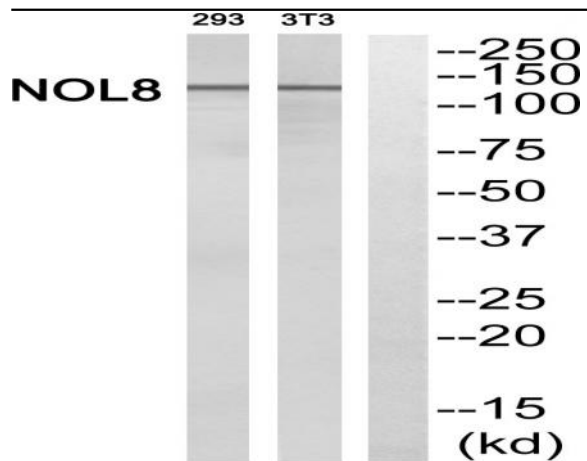
Products Images



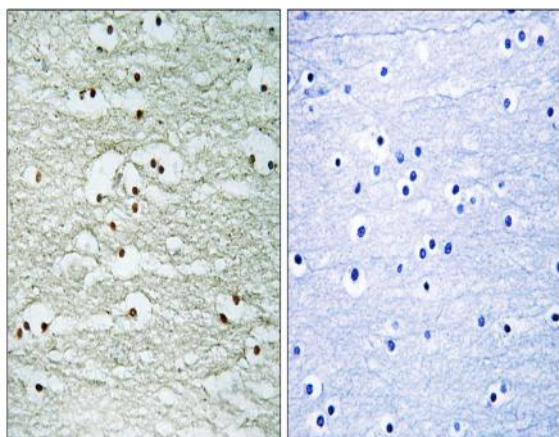
Western Blot analysis of 3T3 cells using Nop132 Polyclonal Antibody diluted at 1:1000 cells nucleus extracted by Minute TM Cytoplasmic and Nuclear Fractionation kit (SC-003, Inventbiotech, MN, USA).



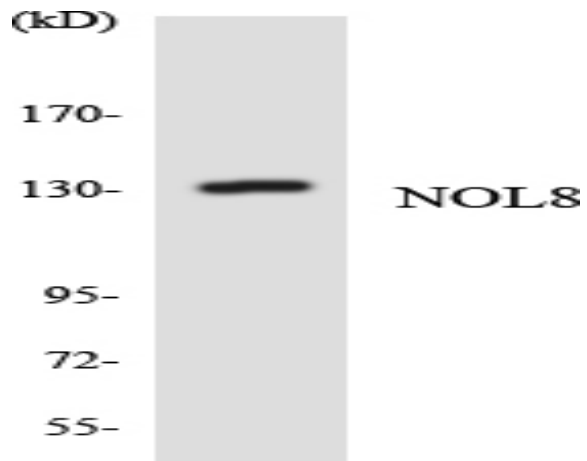
Western Blot analysis of NIH-3T3 cells using Nop132 Polyclonal Antibody diluted at 1:1000 cells nucleus extracted by Minute TM Cytoplasmic and Nuclear Fractionation kit (SC-003, Inventbiotech, MN, USA).



Western blot analysis of NOL8 Antibody. The lane on the right is blocked with the NOL8 peptide.



Immunohistochemistry analysis of paraffin-embedded human brain, using NOL8 Antibody. The lane on the right is blocked with the NOL8 peptide.



Western blot analysis of the lysates from HepG2 cells using NOL8 antibody.