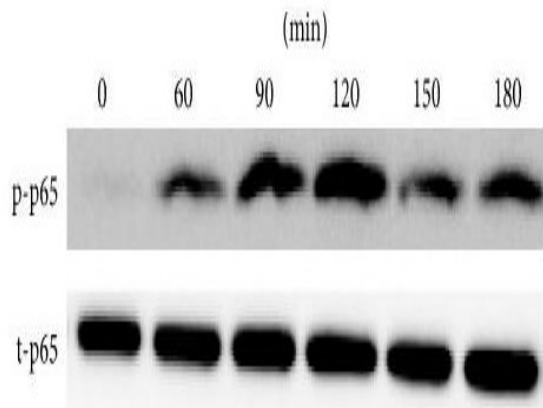


## NFκB-p65 Polyclonal Antibody

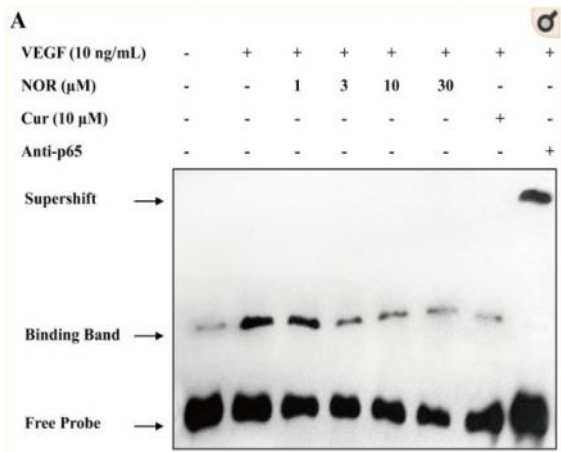
<b>Catalog No :</b>	YT3108
<b>Reactivity :</b>	Human;Mouse;Rat;pig
<b>Applications :</b>	WB;IHC;IF;ELISA
<b>Target :</b>	NFκB p65
<b>Fields :</b>	>>Antifolate resistance;>>MAPK signaling pathway;>>Ras signaling pathway;>>cAMP signaling pathway;>>Chemokine signaling pathway;>>NF-kappa B signaling pathway;>>HIF-1 signaling pathway;>>Sphingolipid signaling pathway;>>Mitophagy - animal;>>PI3K-Akt signaling pathway;>>Apoptosis;>>Longevity regulating pathway;>>Cellular senescence;>>Osteoclast differentiation;>>Neutrophil extracellular trap formation;>>Toll-like receptor signaling pathway;>>NOD-like receptor signaling pathway;>>RIG-I-like receptor signaling pathway;>>Cytosolic DNA-sensing pathway;>>C-type lectin receptor signaling pathway;>>IL-17 signaling pathway;>>Th1 and Th2 cell differentiation;>>Th17 cell differentiation;>>T cell receptor signaling pathway;>>B cell receptor signaling pathway;>>TNF signaling pathway;>>Neurotrophin signaling pathway;>>Prolactin signaling pathway;>>Adipocytokine signaling pathway;>>Relaxin signaling pathway;>>Insulin resistance;>>Non-alcoholic fatty liver disease;>>AGE-RAGE signaling pathway in diabe
<b>Gene Name :</b>	RELA
<b>Protein Name :</b>	Transcription factor p65
<b>Human Gene Id :</b>	5970
<b>Human Swiss Prot No :</b>	Q04206
<b>Mouse Gene Id :</b>	19697
<b>Mouse Swiss Prot No :</b>	Q04207
<b>Immunogen :</b>	The antiserum was produced against synthesized peptide derived from human NF-kappaB p65. AA range:247-296
<b>Specificity :</b>	NFκB-p65 Polyclonal Antibody detects endogenous levels of NFκB-p65 protein.

<b>Formulation :</b>	Liquid in PBS containing 50% glycerol, 0.5% BSA and 0.02% sodium azide.
<b>Source :</b>	Polyclonal, Rabbit,IgG
<b>Dilution :</b>	WB 1:500 - 1:2000. IHC 1:100 - 1:300. ELISA: 1:5000.. IF 1:50-200
<b>Purification :</b>	The antibody was affinity-purified from rabbit antiserum by affinity-chromatography using epitope-specific immunogen.
<b>Concentration :</b>	1 mg/ml
<b>Storage Stability :</b>	-15°C to -25°C/1 year(Do not lower than -25°C)
<b>Observed Band :</b>	60kD
<b>Cell Pathway :</b>	MAPK_ERK_Growth;MAPK_G_Protein;Chemokine;Apoptosis_Inhibition;Apoptosis_Mitochondrial;Apoptosis_Overview;Toll_Like;NOD-like receptor;RIG-I-like receptor;Cytosolic DNA-sensing pathway;T_Cell_Receptor;B
<b>Background :</b>	NF-kappa-B is a ubiquitous transcription factor involved in several biological processes. It is held in the cytoplasm in an inactive state by specific inhibitors. Upon degradation of the inhibitor, NF-kappa-B moves to the nucleus and activates transcription of specific genes. NF-kappa-B is composed of NFKB1 or NFKB2 bound to either REL, RELA, or RELB. The most abundant form of NF-kappa-B is NFKB1 complexed with the product of this gene, RELA. Four transcript variants encoding different isoforms have been found for this gene. [provided by RefSeq, Sep 2011],
<b>Function :</b>	function:NF-kappa-B is a pleiotropic transcription factor which is present in almost all cell types and is involved in many biological processes such as inflammation, immunity, differentiation, cell growth, tumorigenesis and apoptosis. NF-kappa-B is a homo- or heterodimeric complex formed by the Rel-like domain-containing proteins RELA/p65, RELB, NFKB1/p105, NFKB1/p50, REL and NFKB2/p52 and the heterodimeric p65-p50 complex appears to be most abundant one. The dimers bind at kappa-B sites in the DNA of their target genes and the individual dimers have distinct preferences for different kappa-B sites that they can bind with distinguishable affinity and specificity. Different dimer combinations act as transcriptional activators or repressors, respectively. NF-kappa-B is controlled by various mechanisms of post-translational modification and subcellular compartmentalization as well as by in
<b>Subcellular Location :</b>	Nucleus . Cytoplasm . Nuclear, but also found in the cytoplasm in an inactive form complexed to an inhibitor (I-kappa-B) (PubMed:1493333). Colocalized with DDX1 in the nucleus upon TNF-alpha induction (PubMed:19058135). Colocalizes with GFI1 in the nucleus after LPS stimulation (PubMed:20547752). Translocation to the nucleus is impaired in L.monocytogenes infection (PubMed:20855622). .

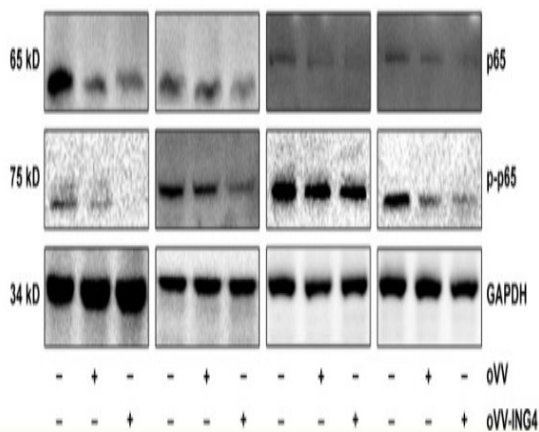
## Products Images



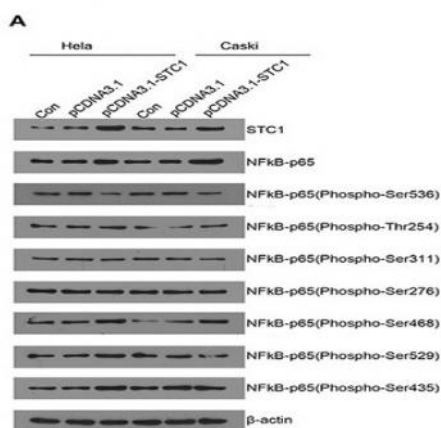
Yan, Jinchuan, et al. "CD137 regulates NFATc1 expression in mouse VSMCs through TRAF6/NF- $\kappa$ B p65 signaling pathway." *Mediators of inflammation* 2015 (2015).



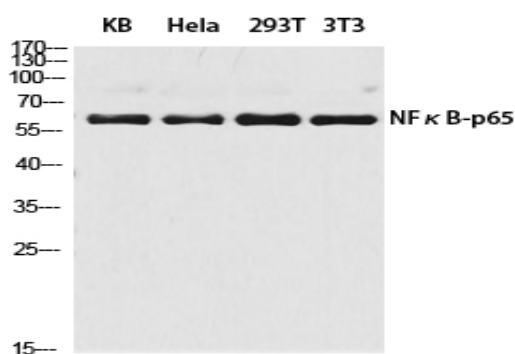
Lu, Qian, et al. "Norisoboldine suppresses VEGF-induced endothelial cell migration via the cAMP-PKA-NF- $\kappa$ B/Notch1 pathway." *PloS one* 8.12 (2013): e81220.



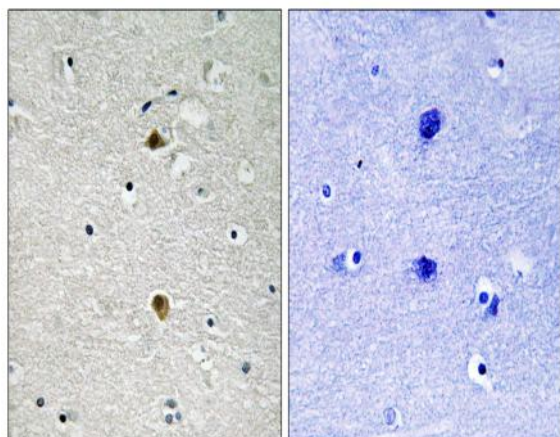
Peng, Jiamin, et al. "synergistic suppression effect on tumor growth of acute myeloid leukemia by combining cytarabine with an engineered oncolytic vaccinia virus." *OncoTargets and therapy* 11 (2018): 6887.



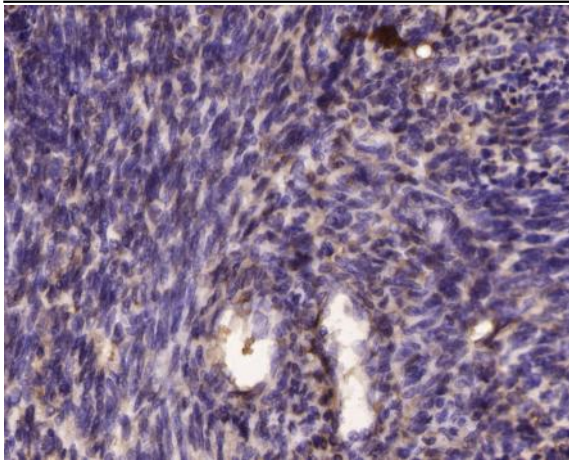
Pan, Xi, et al. "STC1 promotes cell apoptosis via NF-κB phospho-P65 Ser536 in cervical cancer cells." *Oncotarget* 8.28 (2017): 46249.



Western blot analysis of KB HeLa 293T 3T3 lysis using NFκB-p65 antibody. Antibody was diluted at 1:2000



Immunohistochemistry analysis of paraffin-embedded human brain tissue, using NF-kappaB p65 Antibody. The picture on the right is blocked with the synthesized peptide.



Immunohistochemical analysis of paraffin-embedded human Uterine cell rich leiomyoma Antibody was diluted at 1:200(4° overnight).