

## Neuroplastin Polyclonal Antibody

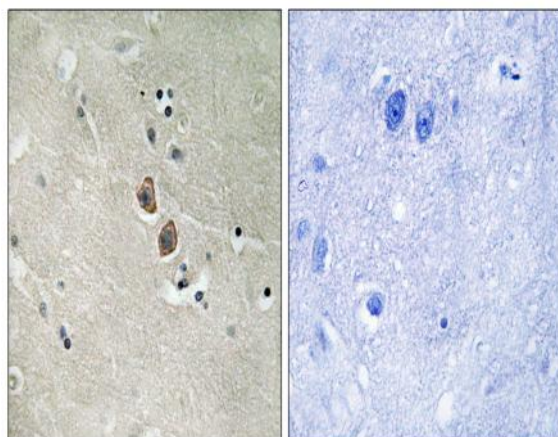
<b>Catalog No :</b>	YT3075
<b>Reactivity :</b>	Human;Mouse;Rat
<b>Applications :</b>	IHC;IF;ELISA
<b>Target :</b>	Neuroplastin
<b>Gene Name :</b>	NPTN
<b>Protein Name :</b>	Neuroplastin
<b>Human Gene Id :</b>	27020
<b>Human Swiss Prot No :</b>	Q9Y639
<b>Mouse Gene Id :</b>	20320
<b>Mouse Swiss Prot No :</b>	P97300
<b>Rat Gene Id :</b>	56064
<b>Rat Swiss Prot No :</b>	P97546
<b>Immunogen :</b>	The antiserum was produced against synthesized peptide derived from human NPTN. AA range:106-155
<b>Specificity :</b>	Neuroplastin Polyclonal Antibody detects endogenous levels of Neuroplastin protein.
<b>Formulation :</b>	Liquid in PBS containing 50% glycerol, 0.5% BSA and 0.02% sodium azide.
<b>Source :</b>	Polyclonal, Rabbit,IgG
<b>Dilution :</b>	IHC 1:100 - 1:300. ELISA: 1:5000.. IF 1:50-200
<b>Purification :</b>	The antibody was affinity-purified from rabbit antiserum by affinity-chromatography using epitope-specific immunogen.

---

<b>Concentration :</b>	1 mg/ml
<b>Storage Stability :</b>	-15°C to -25°C/1 year(Do not lower than -25°C)
<b>Molecularweight :</b>	31kD
<b>Background :</b>	This gene encodes a type I transmembrane protein belonging to the Ig superfamily. The protein is believed to be involved in cell-cell interactions or cell-substrate interactions. Alternative splicing results in multiple transcript variants. [provided by RefSeq, May 2009],
<b>Function :</b>	PTM:N-glycosylated.,similarity:Contains 1 Ig-like C2-type (immunoglobulin-like) domain.,similarity:Contains 1 Ig-like V-type (immunoglobulin-like) domain.,tissue specificity:Isoform 1 is ubiquitous.,
<b>Subcellular Location :</b>	Cell membrane ; Single-pass type I membrane protein .; [Isoform 2]: Cell junction, synapse, postsynaptic density .
<b>Expression :</b>	Isoform 1 is ubiquitously expressed. Isoform 2 is expressed in brain cortex and cerebellum (at protein level).

---

## Products Images



Immunohistochemistry analysis of paraffin-embedded human brain tissue, using NPTN Antibody. The picture on the right is blocked with the synthesized peptide.