

**mPR $\gamma$  Polyclonal Antibody**

<b>Catalog No :</b>	YT2826
<b>Reactivity :</b>	Human;Mouse;Rat
<b>Applications :</b>	WB;ELISA;IHC
<b>Target :</b>	mPR $\gamma$
<b>Fields :</b>	>>Chemical carcinogenesis - receptor activation
<b>Gene Name :</b>	PAQR5
<b>Protein Name :</b>	Membrane progestin receptor gamma
<b>Human Gene Id :</b>	54852
<b>Human Swiss Prot No :</b>	Q9NXX6
<b>Mouse Gene Id :</b>	74090
<b>Mouse Swiss Prot No :</b>	Q9DCU0
<b>Immunogen :</b>	The antiserum was produced against synthesized peptide derived from human MPRG. AA range:281-330
<b>Specificity :</b>	mPR $\gamma$ Polyclonal Antibody detects endogenous levels of mPR $\gamma$ protein.
<b>Formulation :</b>	Liquid in PBS containing 50% glycerol, 0.5% BSA and 0.02% sodium azide.
<b>Source :</b>	Polyclonal, Rabbit,IgG
<b>Dilution :</b>	WB 1:500-2000;IHC 1:50-300; ELISA 2000-20000
<b>Purification :</b>	The antibody was affinity-purified from rabbit antiserum by affinity-chromatography using epitope-specific immunogen.
<b>Concentration :</b>	1 mg/ml

**Storage Stability :** -15°C to -25°C/1 year(Do not lower than -25°C)

**Observed Band :** 38kD

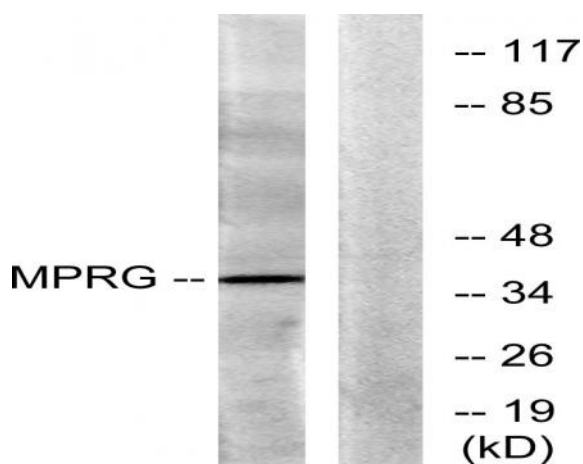
**Background :** function:Steroid membrane receptor. Binds progesterone. May be involved in oocyte maturation.,similarity:Belongs to the ADIPOR family.,tissue specificity:Expressed in the kidney, colon, adrenal and lung.,

**Function :** function:Steroid membrane receptor. Binds progesterone. May be involved in oocyte maturation.,similarity:Belongs to the ADIPOR family.,tissue specificity:Expressed in the kidney, colon, adrenal and lung.,

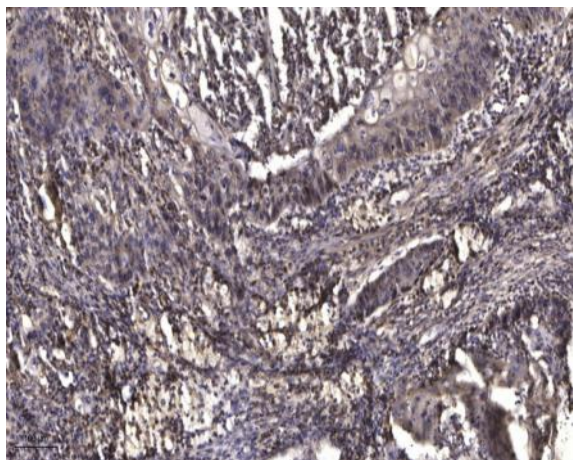
**Subcellular Location :** Cell membrane ; Multi-pass membrane protein .

**Expression :** Expressed in the brain, lung, kidney, colon, adrenal and lung.

## Products Images



Western blot analysis of lysates from HUVEC cells, using MPRG Antibody. The lane on the right is blocked with the synthesized peptide.



Immunohistochemical analysis of paraffin-embedded human Squamous cell carcinoma of lung. 1, Antibody was diluted at 1:200(4° overnight). 2, Tris-EDTA,pH9.0 was used for antigen retrieval. 3,Secondary antibody was diluted at 1:200(room temperature, 45min).