

mPR α Polyclonal Antibody

| | |
|------------------------------|---|
| Catalog No : | YT2825 |
| Reactivity : | Human;Mouse |
| Applications : | WB;IHC |
| Target : | mPR α |
| Fields : | >>Chemical carcinogenesis - receptor activation |
| Gene Name : | PAQR7 |
| Protein Name : | Membrane progestin receptor alpha |
| Human Gene Id : | 164091 |
| Human Swiss Prot No : | Q86WK9 |
| Mouse Swiss Prot No : | Q80ZE4 |
| Immunogen : | The antiserum was produced against synthesized peptide derived from human MPRA. AA range:297-346 |
| Specificity : | mPR α Polyclonal Antibody detects endogenous levels of mPR α protein. |
| Formulation : | Liquid in PBS containing 50% glycerol, 0.5% BSA and 0.02% sodium azide. |
| Source : | Polyclonal, Rabbit,IgG |
| Dilution : | WB 1:500-2000;IHC 1:50-300 |
| Purification : | The antibody was affinity-purified from rabbit antiserum by affinity-chromatography using epitope-specific immunogen. |
| Concentration : | 1 mg/ml |
| Storage Stability : | -15°C to -25°C/1 year(Do not lower than -25°C) |

Observed Band : 40kD

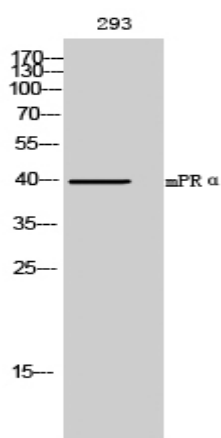
Background : function:Steroid membrane receptor. Binds progesterone in vitro. May be involved in oocyte maturation.,similarity:Belongs to the ADIPOR family.,tissue specificity:Expressed in ovary, testis, placenta, uterus and bladder.,

Function : function:Steroid membrane receptor. Binds progesterone in vitro. May be involved in oocyte maturation.,similarity:Belongs to the ADIPOR family.,tissue specificity:Expressed in ovary, testis, placenta, uterus and bladder.,

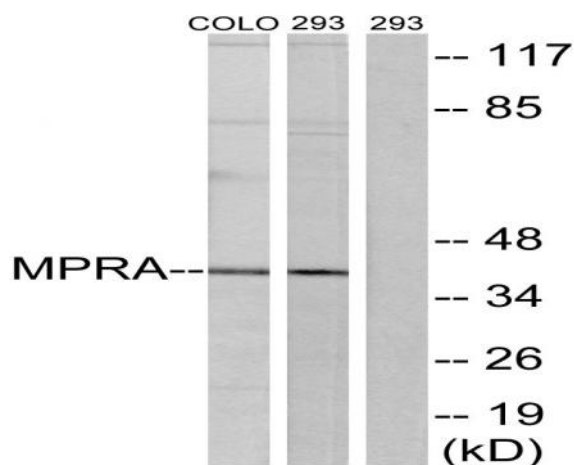
Subcellular Location : Cell membrane ; Multi-pass membrane protein .

Expression : Expressed in a wide range of tissues including ovary, testis, placenta, uterus and bladder.

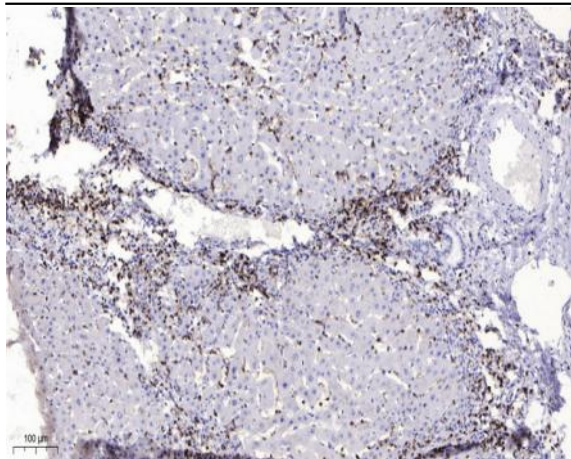
Products Images



Western Blot analysis of 293 cells using mPR α Polyclonal Antibody



Western blot analysis of lysates from 293 and COLO cells, using MPRA Antibody. The lane on the right is blocked with the synthesized peptide.



Immunohistochemical analysis of paraffin-embedded human liver cancer. 1, Antibody was diluted at 1:200(4° overnight). 2, Tris-EDTA,pH9.0 was used for antigen retrieval. 3,Secondary antibody was diluted at 1:200(room temperature, 45min).