

Nesprin-3 Polyclonal Antibody

Catalog No :	YT3039
Reactivity :	Human;Mouse
Applications :	WB;IF;ELISA
Target :	Nesprin-3
Gene Name :	SYNE3
Protein Name :	Nesprin-3
Human Gene Id :	161176
Human Swiss Prot No :	Q6ZMZ3
Mouse Gene Id :	212073
Mouse Swiss Prot No :	Q4FZC9
Immunogen :	The antiserum was produced against synthesized peptide derived from human C14orf49. AA range:169-218
Specificity :	Nesprin-3 Polyclonal Antibody detects endogenous levels of Nesprin-3 protein.
Formulation :	Liquid in PBS containing 50% glycerol, 0.5% BSA and 0.02% sodium azide.
Source :	Polyclonal, Rabbit,IgG
Dilution :	WB 1:500 - 1:2000. IF 1:200 - 1:1000. ELISA: 1:40000. Not yet tested in other applications.
Purification :	The antibody was affinity-purified from rabbit antiserum by affinity-chromatography using epitope-specific immunogen.
Concentration :	1 mg/ml
Storage Stability :	-15°C to -25°C/1 year(Do not lower than -25°C)

Observed Band : 115kD

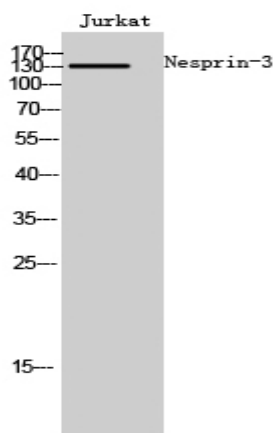
Background : function:Involved in the maintenance of nuclear organization and structural integrity. Probable anchoring protein which theters the nucleus to the cytoskeleton by binding PLEC1/Plectin which can associate with the intermediate filament system.,similarity:Belongs to the nesprin family.,similarity:Contains 1 KASH domain.,similarity:Contains 2 spectrin repeats.,subcellular location:Located at the rough reticulum endoplasmic (RER) in some cells.,subunit:Interacts with actin-binding domain of PLEC1/plectin.,

Function : function:Involved in the maintenance of nuclear organization and structural integrity. Probable anchoring protein which theters the nucleus to the cytoskeleton by binding PLEC1/Plectin which can associate with the intermediate filament system.,similarity:Belongs to the nesprin family.,similarity:Contains 1 KASH domain.,similarity:Contains 2 spectrin repeats.,subcellular location:Located at the rough reticulum endoplasmic (RER) in some cells.,subunit:Interacts with actin-binding domain of PLEC1/plectin.,

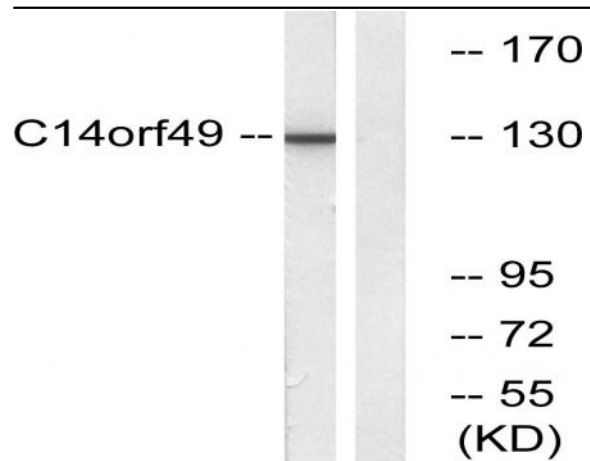
Subcellular Location : Nucleus outer membrane ; Single-pass type IV membrane protein . Nucleus envelope . Rough endoplasmic reticulum .

Expression : Expressed in aortic endothelial cells (at protein level).

Products Images



Western Blot analysis of Jurkat cells using Nesprin-3 Polyclonal Antibody cells nucleus extracted by Minute TM Cytoplasmic and Nuclear Fractionation kit (SC-003, Inventbiotech, MN, USA).



Western blot analysis of lysates from Jurkat cells, using C14orf49 Antibody. The lane on the right is blocked with the synthesized peptide.