

## NEGR1 Polyclonal Antibody

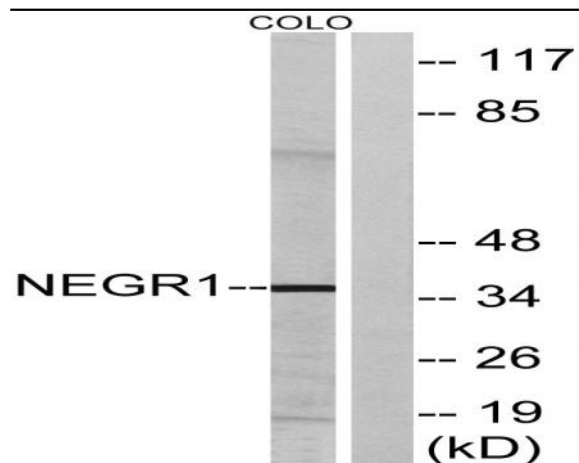
<b>Catalog No :</b>	YT3029
<b>Reactivity :</b>	Human;Mouse;Rat
<b>Applications :</b>	WB;ELISA
<b>Target :</b>	NEGR1
<b>Fields :</b>	>>Cell adhesion molecules
<b>Gene Name :</b>	NEGR1
<b>Protein Name :</b>	Neuronal growth regulator 1
<b>Human Gene Id :</b>	257194
<b>Human Swiss Prot No :</b>	Q7Z3B1
<b>Mouse Gene Id :</b>	320840
<b>Mouse Swiss Prot No :</b>	Q80Z24
<b>Rat Gene Id :</b>	59318
<b>Rat Swiss Prot No :</b>	Q9Z0J8
<b>Immunogen :</b>	The antiserum was produced against synthesized peptide derived from human NEGR1. AA range:172-221
<b>Specificity :</b>	NEGR1 Polyclonal Antibody detects endogenous levels of NEGR1 protein.
<b>Formulation :</b>	Liquid in PBS containing 50% glycerol, 0.5% BSA and 0.02% sodium azide.
<b>Source :</b>	Polyclonal, Rabbit,IgG
<b>Dilution :</b>	WB 1:500 - 1:2000. ELISA: 1:20000. Not yet tested in other applications.

<b>Purification :</b>	The antibody was affinity-purified from rabbit antiserum by affinity-chromatography using epitope-specific immunogen.
<b>Concentration :</b>	1 mg/ml
<b>Storage Stability :</b>	-15°C to -25°C/1 year(Do not lower than -25°C)
<b>Observed Band :</b>	35kD
<b>Cell Pathway :</b>	Cell adhesion molecules (CAMs);
<b>Background :</b>	function:May be involved in cell-adhesion. May function as a trans-neural growth-promoting factor in regenerative axon sprouting in the mammalian brain.,similarity:Belongs to the immunoglobulin superfamily. IgLON family.,similarity:Contains 3 Ig-like C2-type (immunoglobulin-like) domains.,
<b>Function :</b>	function:May be involved in cell-adhesion. May function as a trans-neural growth-promoting factor in regenerative axon sprouting in the mammalian brain.,similarity:Belongs to the immunoglobulin superfamily. IgLON family.,similarity:Contains 3 Ig-like C2-type (immunoglobulin-like) domains.,
<b>Subcellular Location :</b>	Cell membrane ; Lipid-anchor, GPI-anchor .
<b>Expression :</b>	Amygdala,Brain,Fetal kidney,Testis,

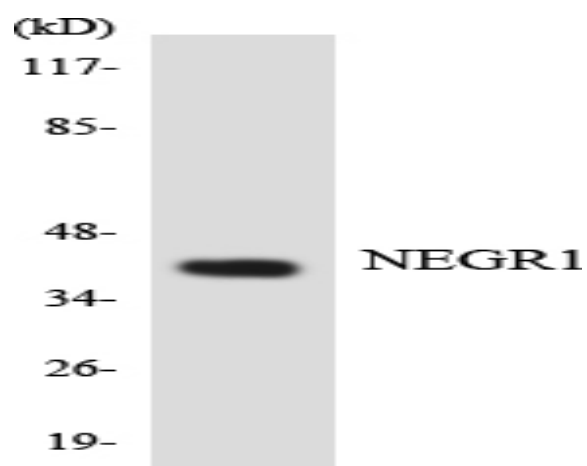
## Products Images



Western Blot analysis of various cells using NEGR1 Polyclonal Antibody



Western blot analysis of lysates from COLO cells, using NEGR1 Antibody. The lane on the right is blocked with the synthesized peptide.



Western blot analysis of the lysates from COLO205 cells using NEGR1 antibody.