

## NBPF5 Polyclonal Antibody

<b>Catalog No :</b>	YT2986
<b>Reactivity :</b>	Human;Rat;Mouse;
<b>Applications :</b>	WB;IHC;IF;ELISA
<b>Target :</b>	NBPF5
<b>Gene Name :</b>	NBPF5
<b>Protein Name :</b>	Neuroblastoma breakpoint family member 5
<b>Human Gene Id :</b>	284610
<b>Human Swiss Prot No :</b>	Q86XG9
<b>Immunogen :</b>	The antiserum was produced against synthesized peptide derived from human NBPF5. AA range:302-351
<b>Specificity :</b>	NBPF5 Polyclonal Antibody detects endogenous levels of NBPF5 protein.
<b>Formulation :</b>	Liquid in PBS containing 50% glycerol, 0.5% BSA and 0.02% sodium azide.
<b>Source :</b>	Polyclonal, Rabbit,IgG
<b>Dilution :</b>	WB 1:500 - 1:2000. IHC 1:100 - 1:300. ELISA: 1:10000.. IF 1:50-200
<b>Purification :</b>	The antibody was affinity-purified from rabbit antiserum by affinity-chromatography using epitope-specific immunogen.
<b>Concentration :</b>	1 mg/ml
<b>Storage Stability :</b>	-15°C to -25°C/1 year(Do not lower than -25°C)
<b>Observed Band :</b>	41kD
<b>Background :</b>	NBPF5 (neuroblastoma breakpoint family member 5) is a 351 amino acid cytoplasmic protein that is expressed in medulla and brain and belongs to the

NBPF family. NBPF5 contains one NBPF domain and is encoded by a gene that maps to human chromosome 1p13. Chromosome 1 spans 260 million base pairs, contains over 3000 genes and comprises nearly 8% of the human genome. Chromosome 1 houses a large number of disease-associated genes, including those that are involved in familial adenomatous polyposis, Stickler syndrome, Parkinson's disease, Gaucher disease, schizophrenia and Usher syndrome. Aberrations in chromosome 1 are found in a variety of cancers, including head and neck cancer, malignant melanoma and multiple myeloma.

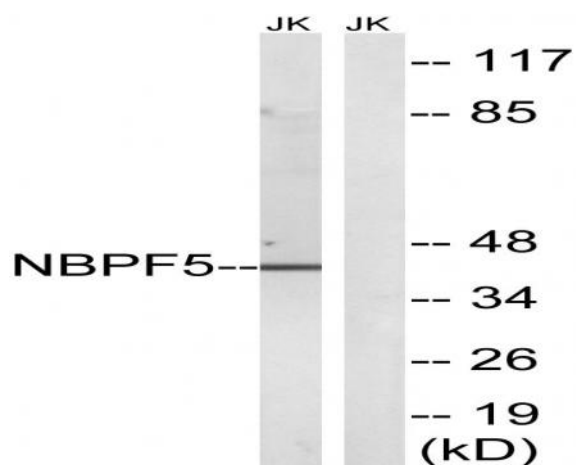
**Subcellular Location :**

Cytoplasm .

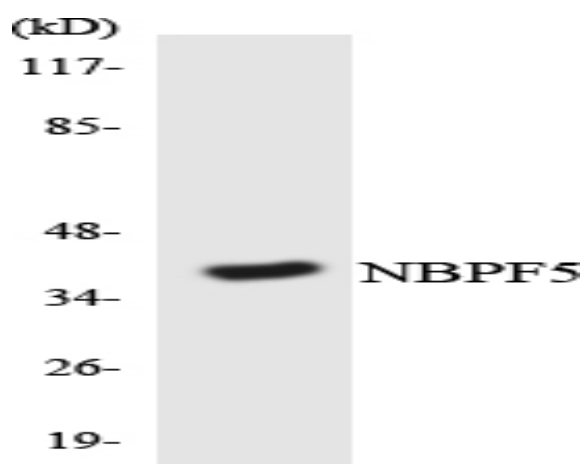
**Expression :**

Expressed in brain and medulla.

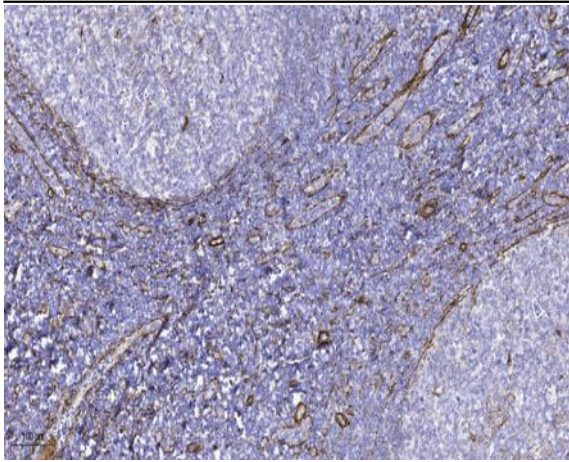
### Products Images



Western blot analysis of lysates from Jurkat cells, using NBPF5 Antibody. The lane on the right is blocked with the synthesized peptide.



Western blot analysis of the lysates from K562 cells using NBPF5 antibody.



Immunohistochemical analysis of paraffin-embedded human tonsil. 1, Tris-EDTA, pH 9.0 was used for antigen retrieval. 2 Antibody was diluted at 1:200 (4° overnight). 3, Secondary antibody was diluted at 1:200 (room temperature, 45 min).