

MELK Polyclonal Antibody

Catalog No :	YT2730
Reactivity :	Human;Mouse
Applications :	WB;IHC;IF;ELISA
Target :	MELK
Gene Name :	MELK
Protein Name :	Maternal embryonic leucine zipper kinase
Human Gene Id :	9833
Human Swiss Prot No :	Q14680
Mouse Swiss Prot No :	Q61846
Immunogen :	The antiserum was produced against synthesized peptide derived from human MELK. AA range:431-480
Specificity :	MELK Polyclonal Antibody detects endogenous levels of MELK protein.
Formulation :	Liquid in PBS containing 50% glycerol, 0.5% BSA and 0.02% sodium azide.
Source :	Polyclonal, Rabbit,IgG
Dilution :	WB 1:500 - 1:2000. IHC 1:100 - 1:300. IF 1:200 - 1:1000. ELISA: 1:10000. Not yet tested in other applications.
Purification :	The antibody was affinity-purified from rabbit antiserum by affinity-chromatography using epitope-specific immunogen.
Concentration :	1 mg/ml
Storage Stability :	-15°C to -25°C/1 year(Do not lower than -25°C)
Observed Band :	75kD

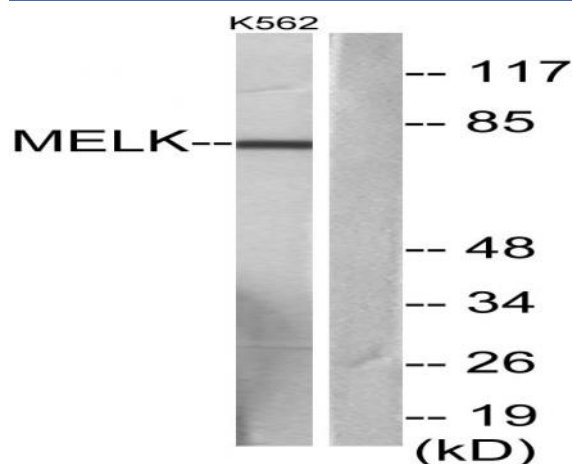
Background : catalytic activity:ATP + a protein = ADP + a phosphoprotein.,function:Phosphorylates ZNF622 and may contribute to its redirection to the nucleus. May be involved in the inhibition of spliceosome assembly during mitosis.,PTM:Autophosphorylated. Thr-478 phosphorylation during mitosis promotes interaction with PPP1R8.,similarity:Belongs to the protein kinase superfamily.,similarity:Belongs to the protein kinase superfamily. CAMK Ser/Thr protein kinase family. SNF1 subfamily.,similarity:Contains 1 KA1 (kinase-associated) domain.,similarity:Contains 1 protein kinase domain.,subunit:Interacts with ZNF622 and PPP1R8.,tissue specificity:Expressed in placenta, kidney, thymus, testis, ovary and intestine.,

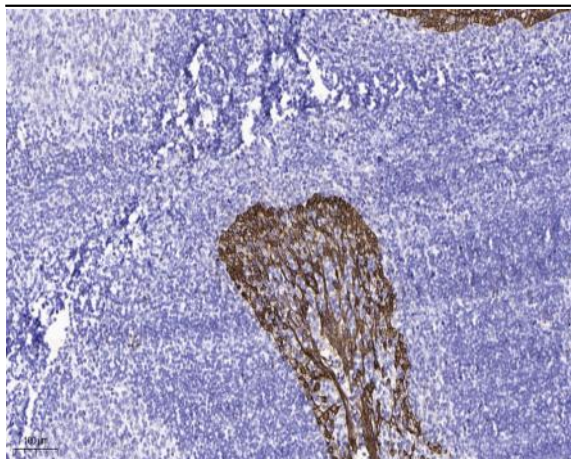
Function : catalytic activity:ATP + a protein = ADP + a phosphoprotein.,function:Phosphorylates ZNF622 and may contribute to its redirection to the nucleus. May be involved in the inhibition of spliceosome assembly during mitosis.,PTM:Autophosphorylated. Thr-478 phosphorylation during mitosis promotes interaction with PPP1R8.,similarity:Belongs to the protein kinase superfamily.,similarity:Belongs to the protein kinase superfamily. CAMK Ser/Thr protein kinase family. SNF1 subfamily.,similarity:Contains 1 KA1 (kinase-associated) domain.,similarity:Contains 1 protein kinase domain.,subunit:Interacts with ZNF622 and PPP1R8.,tissue specificity:Expressed in placenta, kidney, thymus, testis, ovary and intestine.,

Subcellular Location : Cell membrane ; Peripheral membrane protein .

Expression : Expressed in placenta, kidney, thymus, testis, ovary and intestine.

Products Images





Immunohistochemical analysis of paraffin-embedded human tonsil. 1, Antibody was diluted at 1:200(4° overnight). 2, Tris-EDTA,pH9.0 was used for antigen retrieval. 3,Secondary antibody was diluted at 1:200(room temperature, 45min).