

**AFP alpha 1 Fetoprotein Monoclonal Antibody(17C5)**

<b>Catalog No :</b>	YM3075
<b>Reactivity :</b>	Human
<b>Applications :</b>	WB;IHC;IF;
<b>Target :</b>	AFP
<b>Fields :</b>	>>Hippo signaling pathway
<b>Gene Name :</b>	AFP
<b>Protein Name :</b>	Alpha-fetoprotein
<b>Human Gene Id :</b>	174
<b>Human Swiss Prot No :</b>	P02771
<b>Mouse Gene Id :</b>	11576
<b>Mouse Swiss Prot No :</b>	P02772
<b>Rat Swiss Prot No :</b>	P02773
<b>Immunogen :</b>	Synthetic Peptide of AFP alpha 1 Fetoprotein
<b>Specificity :</b>	The antibody detects endogenous AFP proteins.
<b>Formulation :</b>	PBS, pH 7.4, containing 0.5%BSA, 0.02% sodium azide as Preservative and 50% Glycerol.
<b>Source :</b>	Monoclonal, Mouse
<b>Dilution :</b>	WB 1:2000 IF 1:200 IHC 1:50-300
<b>Purification :</b>	The antibody was affinity-purified from mouse ascites by affinity-chromatography using specific immunogen.

**Storage Stability :** -15°C to -25°C/1 year(Do not lower than -25°C)

**Observed Band :** 70kD

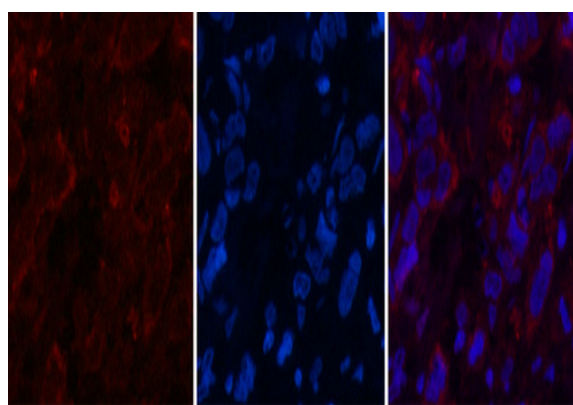
**Background :** This gene encodes alpha-fetoprotein, a major plasma protein produced by the yolk sac and the liver during fetal life. Alpha-fetoprotein expression in adults is often associated with hepatoma or teratoma. However, hereditary persistence of alpha-fetoprotein may also be found in individuals with no obvious pathology. The protein is thought to be the fetal counterpart of serum albumin, and the alpha-fetoprotein and albumin genes are present in tandem in the same transcriptional orientation on chromosome 4. Alpha-fetoprotein is found in monomeric as well as dimeric and trimeric forms, and binds copper, nickel, fatty acids and bilirubin. The level of alpha-fetoprotein in amniotic fluid is used to measure renal loss of protein to screen for spina bifida and anencephaly. [provided by RefSeq, Jul 2008],

**Function :** developmental stage:Occurs in the plasma of fetuses more than 4 weeks old, reaches the highest levels during the 12th-16th week of gestation, and drops to trace amounts after birth. The serum level in adults is usually less than 40 ng/ml. AFP occurs also at high levels in the plasma and ascitic fluid of adults with hepatoma.,function:Binds copper, nickel, and fatty acids as well as, and bilirubin less well than, serum albumin. Only a small percentage (less than 2%) of the human AFP shows estrogen-binding properties.,online information:Alpha-fetoprotein entry,PTM:Independent studies suggest heterogeneity of the N-terminal sequence of the mature protein and of the cleavage site of the signal sequence.,PTM:Sulfated.,similarity:Belongs to the ALB/AFP/VDB family.,similarity:Contains 3 albumin domains.,subunit:Dimeric and trimeric forms have been found in addition to the monomeric form.,tissue

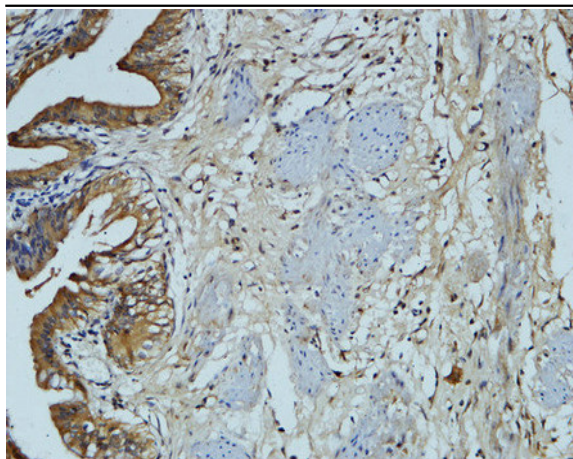
**Subcellular Location :** Secreted.

**Expression :** Plasma. Synthesized by the fetal liver and yolk sac.

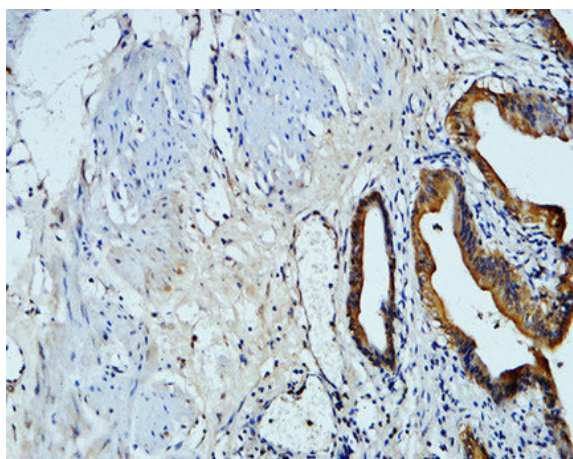
## Products Images



Immunofluorescence analysis of Human-breast-cancer tissue. 1,AFP alpha 1 Fetoprotein Monoclonal Antibody(17C5)(red) was diluted at 1:200(4°C,overnight). 2, Cy3 labeled Secondary antibody was diluted at 1:300(room temperature, 50min).3, Picture B: DAPI(blue) 10min. Picture A:Target. Picture B: DAPI. Picture C: merge of A+B



Immunohistochemical analysis of paraffin-embedded Human gallbladder. 1, Antibody was diluted at 1:100(4° overnight). 2, High-pressure and temperature EDTA, pH8.0 was used for antigen retrieval. 3,Secondary antibody was diluted at 1:200(room temperature, 30min).



Immunohistochemical analysis of paraffin-embedded Human gallbladder. 1, Antibody was diluted at 1:100(4° overnight). 2, High-pressure and temperature EDTA, pH8.0 was used for antigen retrieval. 3,Secondary antibody was diluted at 1:200(room temperature, 30min).